



**Vendor:** Alcatel-Lucent

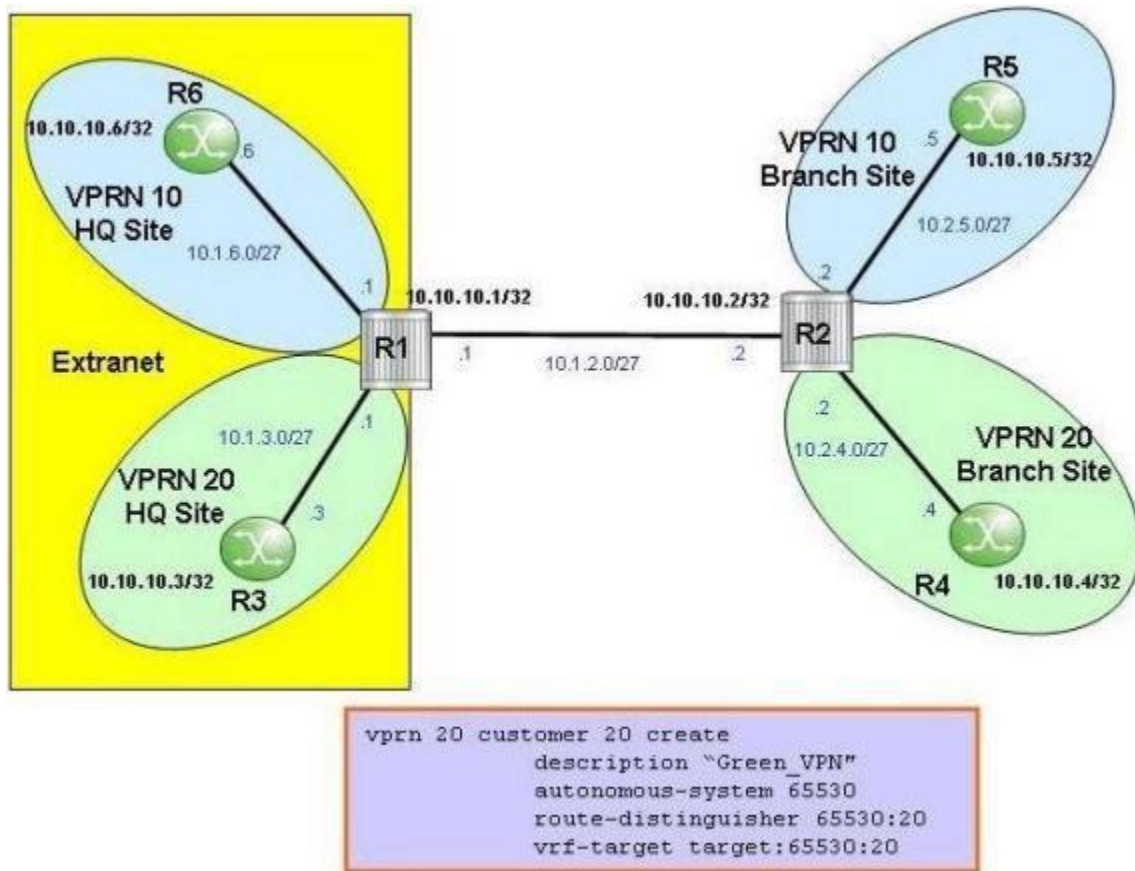
**Exam Code:** 4A0-106

**Exam Name:** Alcatel-Lucent Virtual Private Routed  
Networks

**Version:** DEMO

### QUESTION 1

Click the exhibit. An extranet VPRN is configured on Alcatel-Lucent 7750 SRs. On which router(s) should the displayed configuration be applied?



- A. Router R1
- B. Router R2
- C. Routers R1 and R2
- D. Router R3
- E. Router R4

**Answer: B**

### QUESTION 2

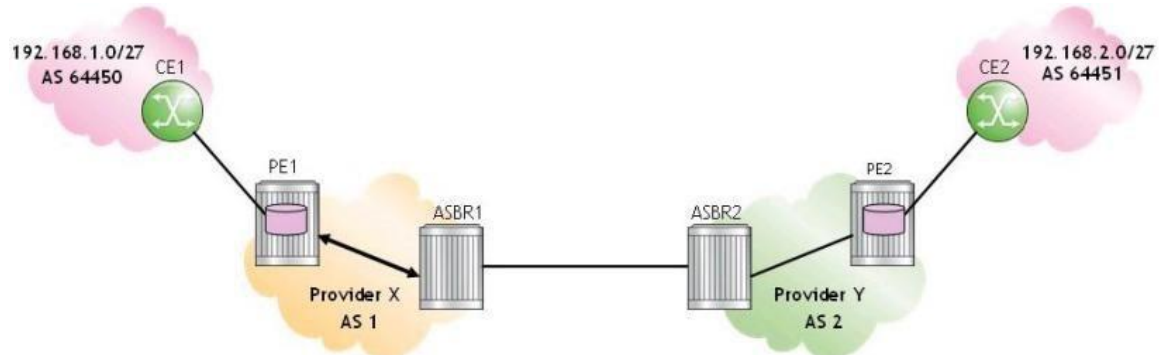
A VPLS spoke SDP is terminated on a VPRN service. The remote side of the spoke SDP is operationally 'Down' with a flag of 'ServiceMTUMismatch'. Which command can you use on an Alcatel-Lucent 7750 SR to show the signaled operational VC-MTU?

- A. Show service id <service-id> base
- B. Show router ldp bindings
- C. Show service id <service-id> sdp detail
- D. Show service id <service-id> vc-mtu

Answer: B

### QUESTION 3

Click the exhibit. For the inter-AS model B VPRN, which of the following is FALSE when CE2 sends an IP packet to 192.168.1.1?

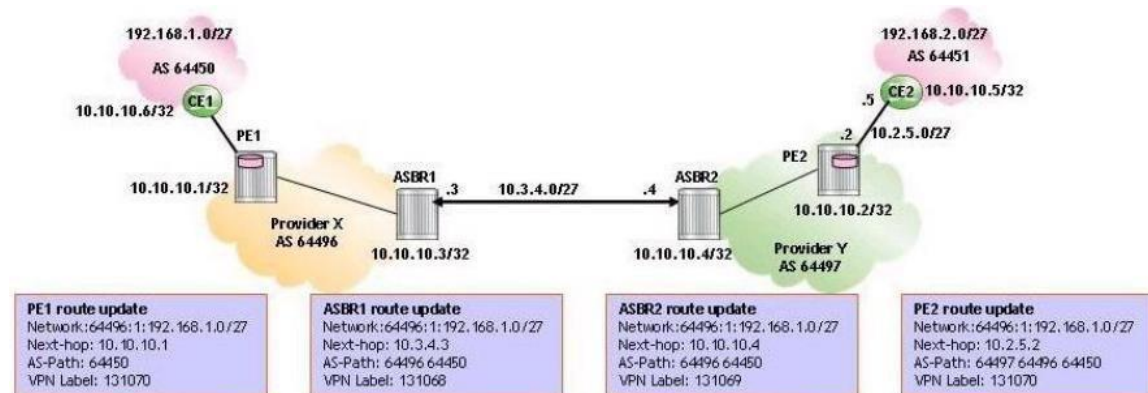


- A. PE2 pushes two labels on the IP packet and forwards it to ASBR2.
- B. ASBR2 forwards the IP packet with one label to ASBR1.
- C. ASBR1 label-switches the packet and forwards it with one label to PE1.
- D. PE1 forwards an unlabeled IP packet to CE1.

Answer: C

### QUESTION 4

Click the exhibit. For the Inter-AS model B VPRN, which of the route updates for prefix 192.168.1.0/27 is incorrect?



- A. The route update sent from PE1.
- B. The route update sent from PE2.
- C. The route update sent from ASBR1.
- D. The route update sent from ASBR2.

Answer: B

### QUESTION 5

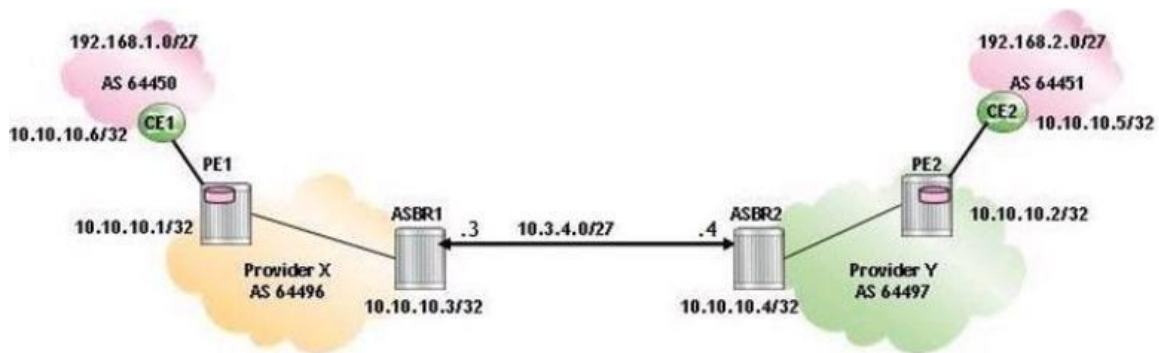
Which of the following about inter-AS model B VPRN is FALSE?

- A. Model B does not require the configuration of VPRN instances on ASBRs.
- B. The ASBRs peer with each other to transport VPN-IPv4 routes between autonomous systems.
- C. PE routers distribute VPN-IPv4 routes to their local ASBR.
- D. One single ASBR is required in each AS to hold the routes for all VPRNs.

**Answer: D**

#### QUESTION 6

Click the exhibit. For the inter-AS model BVPRN, which of the following is the correct BGP configuration on ASBR1?



- A. ASBR1>config>router>bgp# info

```
-----
enable-inter-as-vpn
group "ASBR"
family ipv4
neighbor 10.10.10.4
type external
peer-as 64497
exit
```

- B. ASBR1>config>router>bgp# info

```
-----
enable-inter-as-vpn
group "ASBR"
family vpn-ipv4
neighbor 10.10.10.4
type external
peer-as 64497
exit
```

- C. ASBR1>config>router>bgp# info

```
-----
enable-inter-as-vpn
group "ASBR"
family vpn-ipv4
neighbor 10.3.4.4
type external
peer-as 64497
exit
```

- D. ASBR1>config>router>bgp# info

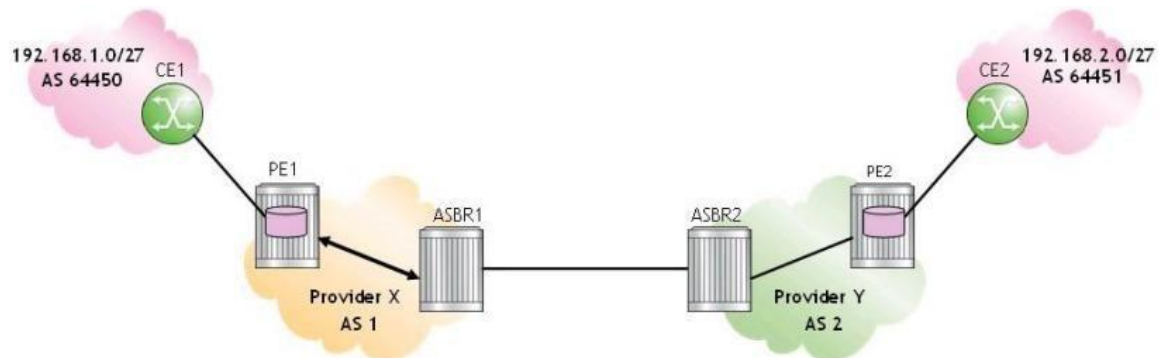
```
-----
enable-inter-as-vpn
group "ASBR"
family ipv4
neighbor 10.3.4.4
next-hop-self
type external
peer-as 64497
exit
```

- A. Option A
- B. Option B
- C. Option C
- D. Option D

**Answer: C**

#### QUESTION 7

Click the exhibit. For the inter-AS model B VPRN, which of the following protocols is used to advertise routes between PE1 and ASBR1?



- A. iBGP
- B. eBGP
- C. MP-iBGP
- D. MP-eBGP

**Answer: C**

#### QUESTION 8

Which of the following about inter-AS model C VPRNs is FALSE?

- A. VPN-IPv4 routes are neither held, nor re-advertised, by the ASBRs.
- B. Each ASBR propagates the routes received from its neighbor ASBR as labeled IPv4 routes in its own AS.
- C. ASBRs exchange labeled IPv4 routes for the system addresses of PE routers.
- D. ASBRs exchange customer routes as labeled IPv4 routes.

**Answer: D**

#### QUESTION 9

In inter-AS model C VPRN, which of the following about the command "advertise-label ipv4" is TRUE?

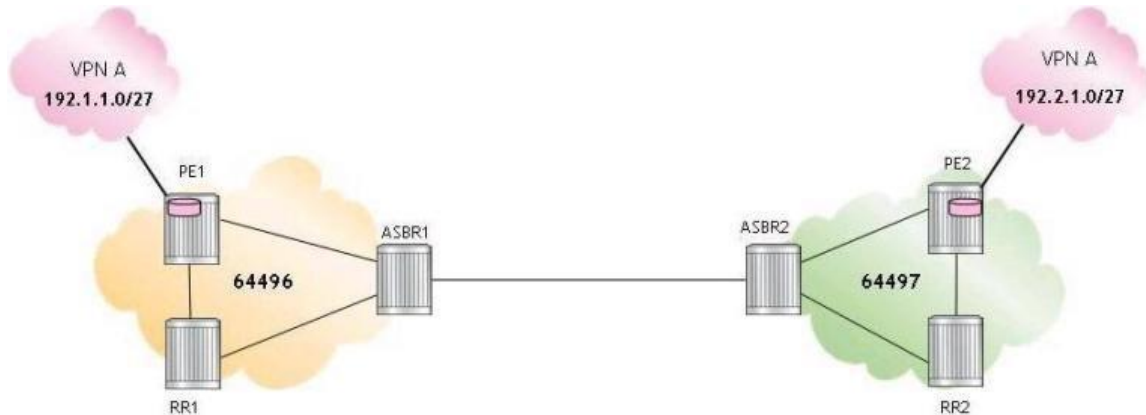
- A. This command is required on all PE routers to distribute labeled IPv4 routes directly to PEs in remote AS.
- B. This command is required on the ASBRs to exchange labeled IPv4 routes between the ASs.
- C. This command is required on the route reflectors to exchange customer routes between ASs as labeled IPv4 routes.

D. This command is required on all PE routers to distribute labeled IPv4 routes to connected CEs.

**Answer: B**

#### QUESTION 10

Click the exhibit. For the inter-AS model C VPRN, which of the following is FALSE when an IP packet is sent from 192.1.1.1 to 192.2.1.1?



- A. PE1 pushes three labels on the IP packet: a VPN label, a BGP label, and an LDP transport label.
- B. ASBR1 pops the LDP label, swaps the BGP label and forwards the IP packet to ASBR2.
- C. ASBR2 swaps the BGP label and pushes an LDP transport label.
- D. PE2 pops all labels and forwards the unlabeled packet to its destination.

**Answer: C**

#### QUESTION 11

Which of the following is a characteristic of inter-AS model C VPRN?

- A. A data packet destined to a remote AS is encapsulated with three labels within the originating AS.
- B. The ASBR redistributes VPN-IPv4 updates to its ASBR eBGP peers.
- C. PE routers in different ASes exchange IPv4 routes directly between each other using eBGP.
- D. The advertising ASBR assigns a new label to the route before sending it via an MP-eBGP update to its ASBR peer.

**Answer: A**

#### QUESTION 12

Which of the following about inter-AS model C VPRN is FALSE?

- A. ASBRs exchange labeled IPv4 routes for the system addresses of PE routers.
- B. It requires a route reflector to be configured in each AS for successful operation.
- C. VPN-IPv4 routes are neither maintained nor distributed by the ASBRs.
- D. PE routers in different ASes exchange VPN-IPv4 routes directly between each other using MP-eBGP.

**Answer: B**



### QUESTION 13

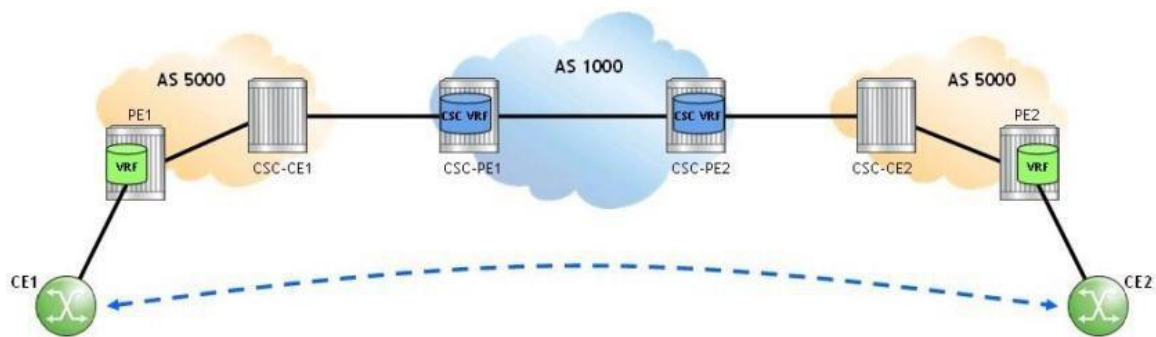
For a Carrier Supporting Carrier (CSC) VPRN where the customer carrier is a BGP/MPLS VPN Service Provider (SP), which of the following is FALSE?

- A. The customer carrier network can be a pure IP network.
- B. The customer carrier provides Layer 2 and Layer 3 services to its end-customers.
- C. A single CSC VPRN is configured on the network provider to support all services offered by the customer carrier.
- D. In the case where the customer carrier offers VPRN services, the model is referred to as hierarchical VPRN.

**Answer: A**

### QUESTION 14

Click the exhibit. A Carrier Supporting Carrier (CSC) VPRN is configured on an Alcatel-Lucent 7750 SR for a customer carrier offering VPRN services. Which of the following about this configuration is FALSE?



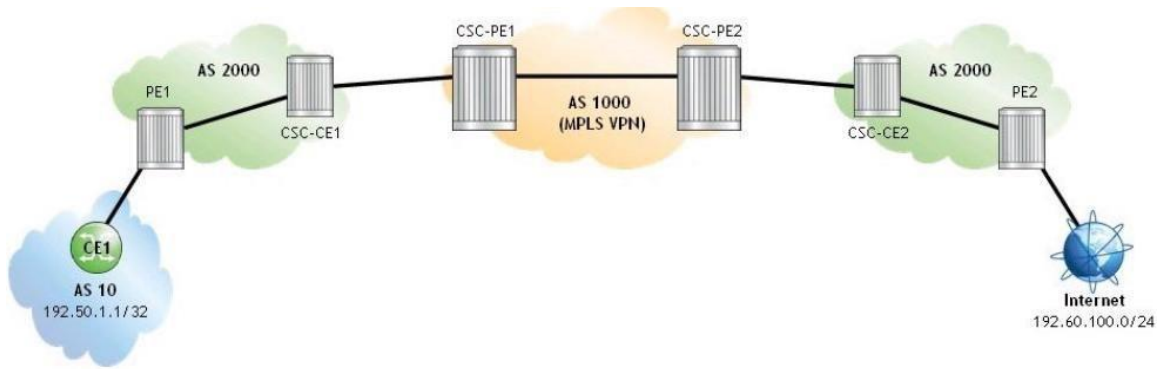
- A. In the CSC VPRN, configure an eBGP session between CSC-PE and CSC-CE and use the "advertise-label ipv4" CLI command to enable the advertisement of labeled IPv4 routes.
- B. When the customer carrier uses the same autonomous system number in various sites, use the "loop-detect off" CLI command to disable the loop detection functionality on CSC-CE and PE routers.
- C. On the CSC-PE routers, use the "carrier-carrier-vpn" CLI command to configure the VPRN service as CSC.
- D. Configure an iBGP session between PE1 and PE2 and use the "family ipv4" CLI command to directly exchange end-customer routes learned from CE1 and CE2.

**Answer: D**

### QUESTION 15

Click the exhibit. A Carrier Supporting Carrier (CSC) VPRN is configured on an Alcatel-Lucent 7750 SR for a customer carrier who is an Internet Service Provider (ISP). Which of the following configuration steps is NOT required?



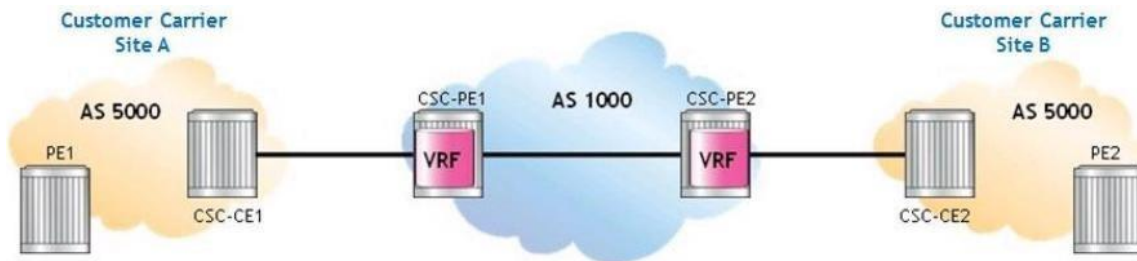


- A. Configuring labeled eBGP sessions between CSC-CE and CSC-PE routers.
- B. Configuring a policy on each CSC-CE to advertise local PE addresses to the network provider.
- C. Configuring labeled iBGP sessions between PEs residing in different customer carrier sites.
- D. Advertising the received system addresses of remote PEs using either iBGP or IGP/LDP within each customer carrier site.

**Answer: C**

#### QUESTION 16

Click the exhibit. For the Carrier Supporting Carrier (CSC) VPRN, which routes are advertised between CSC-PE1 and CSC-PE2?



- A. BGP IPv4 routes for all PE system addresses in AS 5000
- B. VPN-IPv4 routes for all PE system addresses in AS 5000
- C. BGP labeled IPv4 routes for all PE system addresses in AS 5000
- D. LDP labeled routes for all PE system addresses in AS 5000

**Answer: B**

## Thank You for Trying Our Product

### Lead2pass Certification Exam Features:

- ★ More than **99,900** Satisfied Customers Worldwide.
- ★ Average **99.9%** Success Rate.
- ★ **Free Update** to match latest and real exam scenarios.
- ★ **Instant Download** Access! No Setup required.
- ★ Questions & Answers are downloadable in **PDF** format and **VCE** test engine format.
- ★ Multi-Platform capabilities - **Windows, Laptop, Mac, Android, iPhone, iPod, iPad**.
- ★ **100%** Guaranteed Success or **100%** Money Back Guarantee.
- ★ **Fast**, helpful support **24x7**.



View list of all certification exams: <http://www.lead2pass.com/all-products.html>



**10% Discount Coupon Code: ASTR14**