



**Vendor:** Symantec

**Exam Code:** 250-307

**Exam Name:** Administration of Symantec Enterprise Vault  
2007 for Exchange

**Version:** DEMO

### QUESTION 1

When creating a Directory database, where should the data and log locations be stored?

- A. on the same disk as the Audit database
- B. on the same disk as the Vault Store database
- C. on the indexing server
- D. on separate physical disks

**Answer: D**

### QUESTION 2

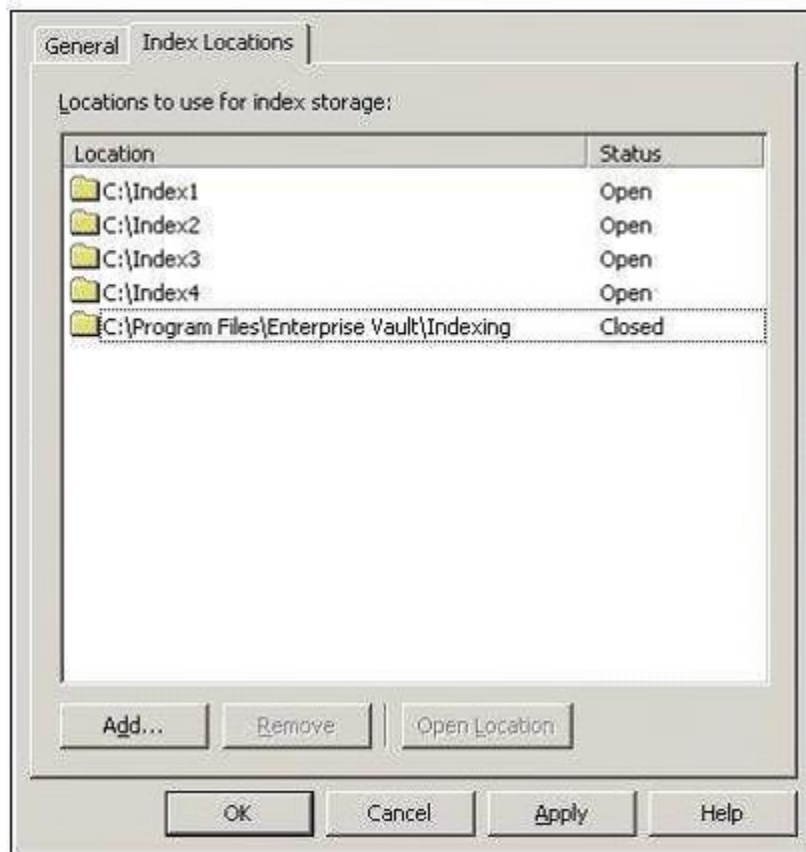
An organization decides to move all archived messages older than one year to less expensive storage. What should the administrator do to use this functionality?

- A. change the archiving policies to use age-based shortcuts
- B. enable migrations in the Vault Store partitions
- C. add, and then start, the Hierarchical Storage Management (HSM) Task
- D. enable this feature in the Storage Expiry's Advanced Functions area

**Answer: B**

### QUESTION 3

Refer to the Exhibit. Which statement is true about the organization's indexing configuration shown in the exhibit?



- A. Any new users added for Mailbox Archiving will have their index volume added to C:\Index1, until that index location is full.
- B. Any new users added for Mailbox Archiving will have their index volume added to any of the locations listed.
- C. The index volumes in C:\Program Files\Enterprise Vault\Indexing are no longer growing.
- D. Any new users added for Mailbox Archiving will have their index volume added to any of the first four locations listed.

**Answer: D**

#### **QUESTION 4**

Refer to the Exhibit. If an organization uses a Mailbox Archiving Policy that uses the site schedule, how would the task run?

- A. It would start every day at 6 p.m. and run until it is complete or until 6 a.m. the next day.
- B. It would start every day at 6 p.m. and run until it is complete or until midnight, and then it would run again from midnight until it is complete or until 6 a.m.
- C. It would run every hour between 6 p.m. and the next day at 6 a.m.
- D. It would start every day at 6 a.m. and run until it is complete or until 6 p.m.

**Answer: A**

#### **QUESTION 5**

When setting up a Vault Store, which two options need to be set up before starting configuration of the Vault Store partition? (Choose two.)

- A. single instance storage
- B. database locations
- C. safety copies
- D. create using Security ACLs
- E. migration of CAB files

**Answer: BC**

#### **QUESTION 6**

Refer to the Exhibit. Based on the information included in the Archive Properties window shown in the exhibit, why would an administrator use the Rebuild Index Volume function?

- A. A new user was recently given permissions to this archive, and the administrator wants to give that new user access to those items.
- B. The index volume has failed, which prevents accessing the archived items.
- C. When the user is viewing shortcuts in Outlook, the shortcut preview is blank.
- D. The archive's indexing level has been changed from Brief to Medium, and the user wants to take advantage of searching all archived items' contents.

**Answer: D**

#### QUESTION 7

Refer to the Exhibit. The Marketing Vault Store currently has four Vault Store partitions, three of which are Closed, and one of which is Open. What happens when an administrator selects Next in the New Partition Wizard as shown in the exhibit?

- A. The administrator receives an error message, because the previously open partition needs to be closed.
- B. The wizard completes successfully, leaving two open partitions. Archives are load balanced between the two partitions.
- C. The wizard completes successfully, with the new partition open, and the previously open partition closes automatically.
- D. The wizard completes successfully, with the new partition open, and the previously open partition closes during the next synchronization run.

**Answer: C**

#### QUESTION 8

Which two statements are true about retention categories? (Choose two.)

- A. A retention category determines the length of time items are kept in the archives.
- B. A retention category determines how long shortcuts are kept in the user's mailbox.
- C. Changes are retroactive. If a retention period is changed from 5 years to 10 years, all archived items with this retention category are affected.
- D. Retention categories can only be used for business oriented messages.
- E. Separate retention categories can be applied to email messages and their attachments.

**Answer: AC**

#### QUESTION 9

In the Symantec Enterprise Vault Administration Console, which two settings at the Site level can affect Exchange Archiving? (Choose two.)

- A. site schedule
- B. index location
- C. indexing level
- D. storage location
- E. archive permissions

**Answer: AC**

#### QUESTION 10

Symantec Enterprise Vault (EV) has been configured to run Journaling and Mailbox Archiving to separate Vault Stores with Vault Store partitions that are configured on NTFS. Mailbox Archiving is set to archive large items after one month and all items older than three months. Which items are single instance stored between the Journal and Mailbox archives?

- A. Zero items are single instance stored.
- B. Large items, older than one month are single instance stored.
- C. Items older than three months are single instance stored.
- D. All items are single instance stored.

**Answer: A**

**QUESTION 11**

In addition to index locations, which Symantec Enterprise Vault (EV) folders should be excluded from Anti-Virus scanning on all EV servers? (Choose three.)

- A. MSMQ storage location
- B. C:\program files\Enterprise Vault\MOM
- C. TEMP folders
- D. Shopping folder
- E. Convertors folder

**Answer: ACD**

**QUESTION 12**

Refer to the Exhibit. Why would an administrator enable the monitoring of Symantec Enterprise Vault (EV) message queues in the Performance Monitor, as shown in the exhibit? (Choose two.)

- A. to monitor storage limits
- B. to monitor indexing performance
- C. to monitor archiving performance
- D. to determine if archiving is running
- E. to determine if EV Operation Manager is running

**Answer: CD**

**QUESTION 13**

Refer to the Exhibit. An organization is setting up two Vault Stores: one for Exchange Mailbox Archiving and one for Exchange Journal Archiving. The organization's mailbox archiving Vault Store is using storage that is mirrored, and replicated to another site. Backups will only be run on the replicated copy. The organization has a strict quota policy and users must manually archive items to free up space as soon as possible. Which safety copy strategy should the administrator choose for the Mailbox Archiving Vault Store?

- A. never
- B. after backup
- C. after backup (immediate for Journaling)
- D. immediately after archive

**Answer: D**

**QUESTION 14**

An organization has implemented role-based authorization for all of its administrators. Which three tasks can only be performed by the Vault Service Account? (Choose three.)

- A. restart Archiving Tasks
- B. change permissions on mailbox archives
- C. run Update Service Locations (USL)
- D. add groups to Authorization Manager

E. modify groups in Authorization Manager

**Answer:** CDE

**QUESTION 15**

Refer to the Exhibit. An organization sets up the Marketing retention category and Storage Expiry as shown in the exhibit. Which statement is true about archived mail messages that are using this retention category?

- A. Archived items, 2 years after being archived, will be deleted immediately.
- B. Archived items, 2 years after their received date, will be deleted immediately.
- C. Archived items that have reached their retention will be deleted on Saturday or Sunday only.
- D. Archived items that have reached their retention will only be deleted when an administrator manually runs Storage Expiry.

**Answer:** D

**QUESTION 16**

What does Enterprise Vault Reporting require on the server where reports are deployed?

- A. Microsoft File Report Scheduler (MFRS)
- B. Microsoft SQL Query Manager (MSQM)
- C. Microsoft Exchange Reporting Manager (MERM)
- D. Microsoft SQL Reporting Services (MSRS)

**Answer:** D

**QUESTION 17**

A user reports a problem accessing archived items and troubleshooting indicates it may be related to the user's Outlook client. How can the Symantec Enterprise Vault (EV) administrator enable client tracing to reveal any issues in the client user extensions in Outlook?

- A. create a profile on the administrator's Outlook and hold Ctrl+Shift while clicking any EV toolbar button, select Maximum Tracing and restart Outlook
- B. enable client tracing from the user's archive in the Vault Administration Console
- C. have the user open Outlook and hold Ctrl+Shift while clicking any EV toolbar button, select Maximum Tracing and restart Outlook
- D. select the client tracing option on DTrace

**Answer:** C

**QUESTION 18**

An organization has a security requirement to track changes made to the Symantec Enterprise Vault (EV) environment pertaining to retention categories, archiving policies, and archive permissions. Which tool would provide this data?

- A. EV Auditing
- B. EV Operation Monitor
- C. EV Reporting

D. EV Event Log

**Answer: A**

**QUESTION 19**

The Symantec Enterprise Vault (EV) administrator needs to periodically view the status of the EV environment. What would provide a snapshot of the environment status?

- A. EV Administration Console
- B. EV Operation Manager
- C. EV Policy Manager
- D. EV Reporting

**Answer: B**

**QUESTION 20**

Refer to the Exhibit. In order to initiate DTrace in the Vault Administration Console what steps must the administrator follow?

- A. open a command prompt window and run the command DTrace.exe
- B. enable Advanced Features in the Vault Administration Console
- C. install DTrace on the Enterprise Vault Server
- D. enable DTrace in Site Monitoring tab

**Answer: B**

## Thank You for Trying Our Product

### Lead2pass Certification Exam Features:

- ★ More than **99,900** Satisfied Customers Worldwide.
- ★ Average **99.9%** Success Rate.
- ★ **Free Update** to match latest and real exam scenarios.
- ★ **Instant Download** Access! No Setup required.
- ★ Questions & Answers are downloadable in **PDF** format and **VCE** test engine format.
- ★ Multi-Platform capabilities - **Windows, Laptop, Mac, Android, iPhone, iPod, iPad**.
- ★ **100%** Guaranteed Success or **100%** Money Back Guarantee.
- ★ **Fast**, helpful support **24x7**.



View list of all certification exams: <http://www.lead2pass.com/all-products.html>



Microsoft



ORACLE



CITRIX



JUNIPER  
NETWORKS



EMC<sup>2</sup>  
where information lives®

**10% Discount Coupon Code: ASTR14**