



**Vendor:** Novell

**Exam Code:** 050-701

**Exam Name:** Upgrading to Novell Open Enterprise Server  
for NetWare

**Version:** DEMO

#### QUESTION 1

After upgrading a NetWare 5.1 server to OES NetWare, you can't mount volume DATA. Given that DATA is an NSS volume, which command will fix the problem?

- A. LOAD NW51.NSS
- B. LOAD ZLSS.NSS
- C. VCU DATA DATA2
- D. VOLMN DATA DATA2
- E. NSS /NW51VOLUMEUPGRADE=ON
- F. NSS /ZLSSVOLUMEUPGRADE=ALL
- G. NSS /NW51VOLUMEUPGRADE=ALL

**Answer:** F

#### QUESTION 2

Distributed File Services uses \_\_\_\_\_, which allows volumes to be joined together such that they appear as subdirectories in one file system. Answer:

**Answer:** JUNCTIONS

#### QUESTION 3

Which products are installed during a Management Server patterned deployment? (Choose 2.)

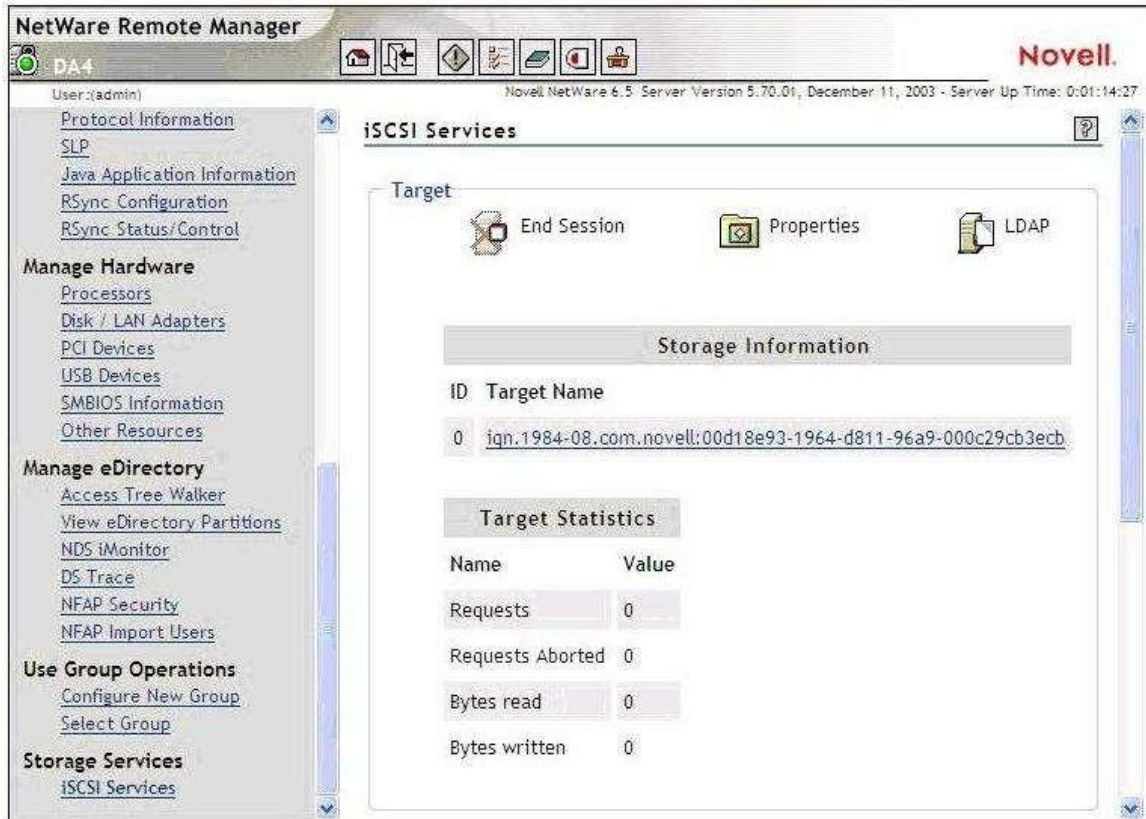
- A. iSCSI
- B. eGuide
- C. OpenSSH
- D. iFolder
- E. iManager
- F. Virtual Office

**Answer:** BE

#### QUESTION 4

Click the Exhibit button to begin.

If you wanted to connect to the iSCSI target displayed in the exhibit, what command would you enter at the iSCSI initiator server console? The IP address of the target is 10.0.0.4.



- A. ISCSIINIT CONNECT 10.0.0.4 DA4
- B. ISCSIINIT CONNECT TARGET=10.0.0.4
- C. ISCSIINIT 10.0.0.4 iqn.1984-08.com.novell:00d18e93-1964-d811-96a9-000c29cb3ecb
- D. ISCSIINIT CONNECT 10.0.0.4  
iqn.1984-08.com.novell:00d18e93-1964-d811-96a9-000c29cb3ecb
- E. ISCSIINIT CONNECT iqn.1984-08.com.novell:00d18e93-1964-d811-96a9-000c29cb3ecb  
10.0.0.4
- F. ISCSIINIT CONNECT TARGET=10.0.0.4 NAME=iqn.1984-08.com.novell:00d18e93-1964-d811-96a9-000c29cb3ecb

**Answer: D**

#### QUESTION 5

What is the recommended size for your server's DOS partition?

- A. 500 MB + the amount of RAM in the system
- B. 200 MB + the amount of RAM in the system
- C. 200 MB + the amount of RAM in the system + the amount of L1 cache in the system
- D. 300 MB + the amount of RAM in the system + the amount of hard disk cache in the system

**Answer: A**

#### QUESTION 6

You have configured a DFS Management Context with the VLDB service running on DA1. In the

SHARED directory on DA1's DATA volume, you created a junction to the root of the VOL1 volume on DA2. You then created a CIFS share for the SHARED directory and granted the appropriate rights to your user and group objects to access the directory. When users access the junction from their Windows 2000 Professional workstations without the Novell Client installed, it fails to take them to VOL1 on DA2. Which is the resolution to this problem?

- A. Load VLDB.NLM on DA2.
- B. Add a VLDB replica to DA2.
- C. Enable DFS support for CIFS clients.
- D. Upgrade the workstations to Windows XP Home or Professional.
- E. Run the VERIFY utility to check the integrity of the pool where VOL1 resides on DA2.

**Answer: C**

#### **QUESTION 7**

A volume on your OES NetWare server has a security label of Password and Token. A user in your tree has logged in using an eDirectory password and a smart card, granting him a clearance with a Read label of Password and Token and a Write label of Password and Token. What level of access does the user have to the volume?

- A. No access
- B. Read only access
- C. Write only access
- D. Read and Write access

**Answer: D**

#### **QUESTION 8**

When accessing iManager 2.5, you authenticate as AHammer.BERLIN.EMA. The roles you need are not displayed. How can you fix this problem?

- A. Restart Tomcat on the server.
- B. Restart Apache Web Server on the server.
- C. Delete all existing roles and then manually rebuild them.
- D. Close the browser window, then reauthenticate as AHammer.
- E. Check the Tomcat configuration file to make sure iManager has been configured correctly.
- F. Authenticate as admin to iManager and assign the missing roles to the AHammer user object.

**Answer: F**

#### **QUESTION 9**

How do you perform a Down-Server Upgrade?

- A. Use iManager 2.0 or later to complete the upgrade from a workstation.
- B. Use NetWare Deployment Manager to complete the upgrade from a workstation.
- C. Mount the OES NetWare Operating System CD; then select Novell > Install to begin the upgrade.
- D. Boot the server from the OES NetWare Operating System CD and manually execute INSTALL.BAT with the /UPGRADE switch.

**Answer: D**

**QUESTION 10**

On an OES NetWare server, you must restart the Tomcat service after installing a new iManager plug-in. How can you do this?

- A. At the server console, enter TC4RESTART.
- B. At the server console, enter TC4 /RESTART.
- C. At the server console, enter TOMCAT -RESTART.
- D. At the server console, enter TC4STOP; then enter TOMCAT4.
- E. At the server console, enter TOMCAT /STOP; then enter TOMCAT /START.

**Answer: D**

**QUESTION 11**

Which OES NetWare component enables script-based management of the network?

- A. NXBit Support
- B. bash Shell Support
- C. ZENworks Management Daemon
- D. Common Information Model Support

**Answer: B**

**QUESTION 12**

How many snapshots can exist on a particular stored-on pool?

- A. 10
- B. 50
- C. 100
- D. 250
- E. 500
- F. 1000

**Answer: E**

**QUESTION 13**

Where are the files for the Tomcat service located on an OES NetWare server?

- A. Sys:\Tc4
- B. Sys:\Ucs
- C. Sys:\Php5
- D. Sys:\Tomcat
- E. Sys:\System
- F. Sys:\Etc\Tomcat
- G. Sys:\System\Tomcat

**Answer: D**

**QUESTION 14**

Which password does the CIFS service on an OES NetWare server use, by default, to authenticate clients?

- A. NIS Password
- B. LDAP Password
- C. Simple Password
- D. Universal Password
- E. eDirectory Password

**Answer: C**

**QUESTION 15**

What is the role of the ARKCONFIG.XML file?

- A. It contains the interval for running Versioning jobs.
- B. It contains configuration settings for the Archive Server.
- C. It contains XML code for configuring an upgrade from Archive and Versioning Services 1.0.
- D. It contains XML configuration settings for the Archive and Versioning Services MySQL instance.

**Answer: B**

**QUESTION 16**

You've copied a file named userdata.iso to the root directory of the DATA volume on your OES NetWare server. You want to mount this ISO image as a volume. Which server console command will do this?

- A. MOUNT DATA:\USERDATA.ISO
- B. nss /Mount=DATA:\USERDATA.ISO
- C. nss /MountImage=DATA:\USERDATA.ISO
- D. nss /MountImageVolume=DATA:\USERDATA.ISO

**Answer: D**

**QUESTION 17**

You want to upgrade a NetWare 6 server with Support Pack 1 to OES NetWare. The server hardware uses dual Pentium II 400 MHz CPUs, 512 MB RAM, an 8 GB hard disk drive with a 200 MB DOS partition, and a USB mouse. Can this server be upgraded?

- A. Yes, the server meets all prerequisite requirements.
- B. No, OES NetWare requires PIII 750 MHz CPUs or later.
- C. No, the server's CPU is too slow and the hard disk drive is too small.
- D. No, the server's DOS partition is too small and USB mice aren't supported.
- E. No, the server doesn't have enough RAM and must have Support Pack 3 or later applied.
- F. No, the server's DOS partition is too small and must have Support Pack 5 or later applied.

**Answer: F**

## Thank You for Trying Our Product

### Lead2pass Certification Exam Features:

- ★ More than **99,900** Satisfied Customers Worldwide.
- ★ Average **99.9%** Success Rate.
- ★ **Free Update** to match latest and real exam scenarios.
- ★ **Instant Download** Access! No Setup required.
- ★ Questions & Answers are downloadable in **PDF** format and **VCE** test engine format.
- ★ Multi-Platform capabilities - **Windows, Laptop, Mac, Android, iPhone, iPod, iPad**.
- ★ **100%** Guaranteed Success or **100%** Money Back Guarantee.
- ★ **Fast**, helpful support **24x7**.



View list of all certification exams: <http://www.lead2pass.com/all-products.html>



Microsoft



ORACLE



JUNIPER  
NETWORKS



EMC²  
where information lives®

**10% Discount Coupon Code: ASTR14**