



**Vendor:** Cisco

**Exam Code:** 640-893

**Exam Name:** Supporting Cisco Data Center System  
Devices v1.0 (DCTECH)

**Version:** DEMO

### QUESTION 1

Which command-line interface mode is best described by this prompt?

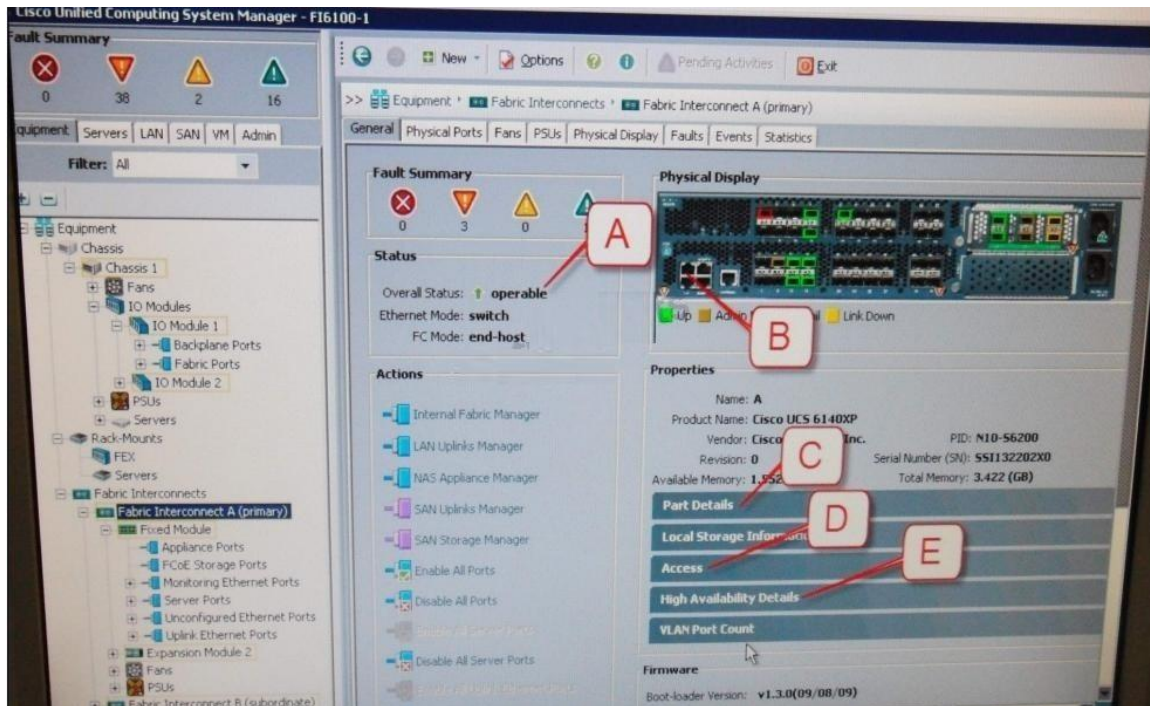
```
UCS-switch-A (nxos) #
```

- A. maintenance mode
- B. EXEC mode
- C. local management mode
- D. global configuration mode
- E. Cisco IOS mode

**Answer: B**

### QUESTION 2

Refer to the exhibit. Where is the best place to see whether the system is ready for a Fabric Interconnect failover?



- A. A - Overall Status operable
- B. B - L1 Connection
- C. C - Part Details
- D. D - Access
- E. E - High Availability Details

**Answer: A**

### QUESTION 3

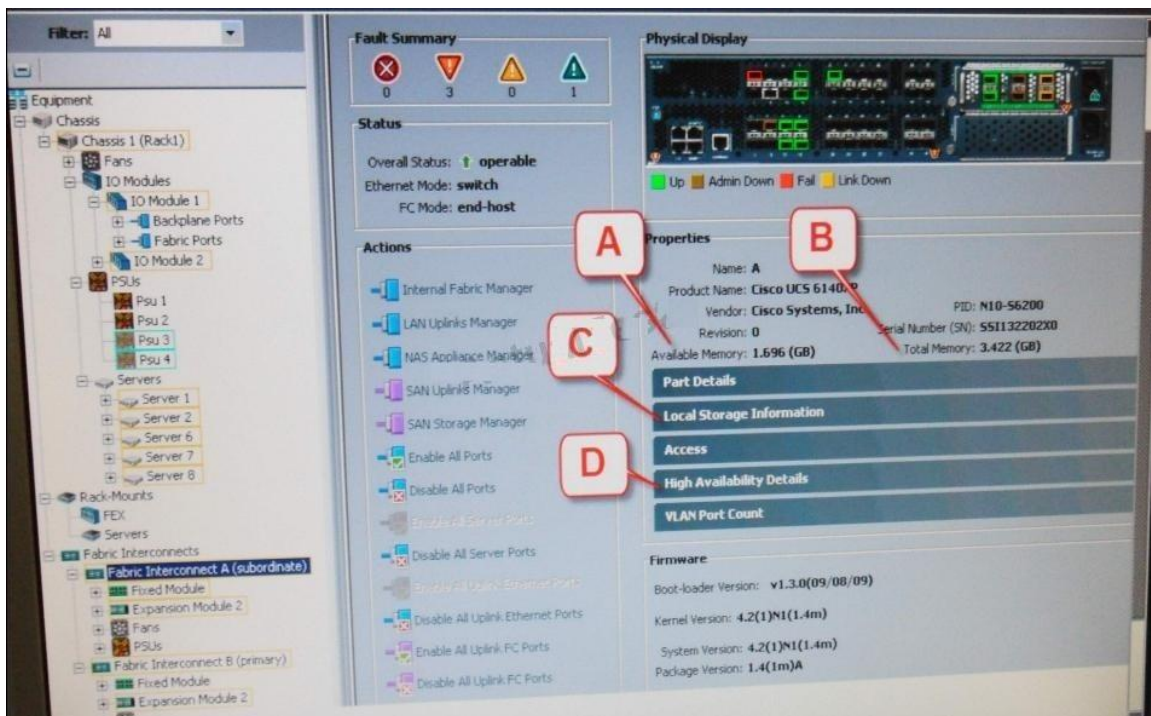
Rafter retaliation or replacement of a Cisco UCS C-Series Rack-Mount Server, the host does not boot, which four options should be verified? (Choose four)

- A. Verify that the front I/O dongle is seated correctly.
- B. Check for loose HDD cables
- C. Reseat or replace the DIMMs
- D. Verify that the host power rails are good and power signals are OK
- E. Reseat the mezzanine card connector
- F. Check the CPU sockets for bent pins
- G. Check the Cisco IMC for fan faults

**Answer:** ACDF

#### QUESTION 4

Refer to the exhibit. Where is the best place to see bootflash free space?



- A. A-Available Memory
- B. B - Total Memory
- C. C - Local Storage Information
- D. D - High Availability Details

**Answer:** C

#### QUESTION 5

Which two methods are used to upgrade Cisco Integrated Management Controller Firmware on a Cisco UCS Server? (Choose two)

- A. FTP server
- B. TFTP server

- C. USB drive
- D. browser client
- E. DVD drive

**Answer: BD**

**QUESTION 6**

Which fabric extender is designed to provide connectivity for rack and blade servers in unified fabric deployments?

- A. Cisco Nexus 1010
- B. Cisco Nexus 3000
- C. Cisco Nexus 4001i
- D. Cisco Nexus 2248TP

**Answer: D**

**QUESTION 7**

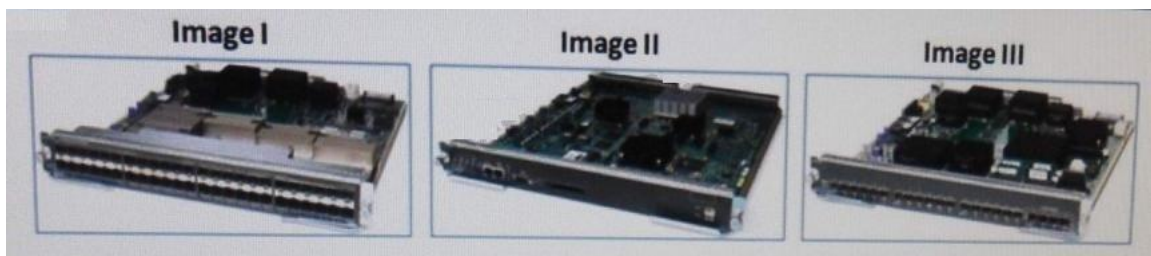
How do you find the serial number of a Cisco UCS 5108 Blade Server chassis?

- A. Use the Cisco UCS Admin.
- B. Use the Cisco UCS Application
- C. Use the Cisco UCS Assistant
- D. Use the Cisco UCS Manager

**Answer: D**

**QUESTION 8**

Refer to the exhibit. Which option identifies the correct modules that are used with the Cisco MDS 9500 Series chassis?



- A. Image I is a switching module, Image II is a supervisor module. Image III is a service module
- B. Image I is a service module, Image II is a switching module. Image III is a supervisor module
- C. Image I is a supervisor module. Image II is a service module. Image III is a switching module
- D. Image I is a switching module. Image II is a service module. Image III is a supervisor module

**Answer: A**

**QUESTION 9**

Which configuration is supported in the Cisco UCS 5108 Blade Server chassis?

- A. Two Cisco UCS B200 Blade Servers, two Cisco UCS B250 Blade Servers, and one Cisco UCS B440 Blade Server
- B. Two Cisco UCS B200 Blade Servers, two Cisco UCS B250 Blade Servers, and two Cisco UCS B440 Blade Servers
- C. Four Cisco UCS B200 Blade Servers, one Cisco UCS B250 Blade Server, and two Cisco UCS B440 Blade Servers
- D. Four Cisco UCS B200 Blade Servers, two Cisco UCS B250 Blade Servers, and two Cisco UCS B440 Blade Servers

**Answer: A**

**QUESTION 10**

Which type of specialized high-speed network is designed to transfer data from storage device to storage device?

- A. LAN
- B. MAN
- C. SAN
- D. WAN

**Answer: C**

**QUESTION 11**

Which three functions are performed with service profiles when the BIOS is upgraded on a Cisco UCS Server? (Choose three.)

- A. Associate the host firmware package to service profile
- B. Disassociate the service profile from the blade or blade pool.
- C. Remove a blade from a blade pool.
- D. Associate the service profile to a blade.
- E. Associate the service profile to a blade pool

**Answer: ADE**

**QUESTION 12**

When should an antistatic wrist strap should be worn?

- A. when using the crimping tool with an integrated wire cutter and wire stripper
- B. when inserting a loopback plug into a router interface
- C. when using a flash card reader to copy Cisco IOS images
- D. when installing or uninstalling Cisco devices or electronics

**Answer: D**

## Thank You for Trying Our Product

### Lead2pass Certification Exam Features:

- ★ More than **99,900** Satisfied Customers Worldwide.
- ★ Average **99.9%** Success Rate.
- ★ **Free Update** to match latest and real exam scenarios.
- ★ **Instant Download** Access! No Setup required.
- ★ Questions & Answers are downloadable in **PDF** format and **VCE** test engine format.
- ★ Multi-Platform capabilities - **Windows, Laptop, Mac, Android, iPhone, iPod, iPad**.
- ★ **100%** Guaranteed Success or **100%** Money Back Guarantee.
- ★ **Fast**, helpful support **24x7**.



View list of all certification exams: <http://www.lead2pass.com/all-products.html>



Microsoft



ORACLE



CITRIX



JUNIPER  
NETWORKS



EMC<sup>2</sup>  
where information lives®

**10% Discount Coupon Code: ASTR14**