



Vendor: Juniper

Exam Code: JN0-360

Exam Name: Service Provider, Specialist (JNCIS-SP)

Version: DEMO

QUESTION 1

On an Ethernet segment, OSPF DROther routers from which type of adjacency with each other?

- A. Full
- B. 2Way
- C. ExStart
- D. Exchange

Answer: B

QUESTION 2

Which statement is true about routing instances on Junos devices?

- A. Routing information cannot be shared between routing instances.
- B. Each routing protocol runs in a separate routing instance.
- C. Junos devices support only one routing instance.
- D. Each routing instance is a unique grouping of routing tables, interfaces, and routing protocol parameters.

Answer: D

QUESTION 3

To which OSPF state does a device transaction once it receives an initial hello packet?

- A. 2Way
- B. Full
- C. ExStart
- D. Exchange

Answer: A

QUESTION 4

Click the Exhibit button. Which two statements are correct according to the output shown in the exhibit? (Choose two.)

```

user@host> show bgp neighbor 5.0.0.5
Peer: 5.0.0.5+62283 AS 2 Local: 5.0.0.25+179 AS 3
Type: External State: Established Flags: <ImportEval Sync>
Last State: OpenConfirm Last Event: RecvKeepAlive
Last Error: None
Options: <Multihop Preference AddressFamily PeerAS LocalAS Rib-group
Refresh>
Address families configured: inet-unicast inet-vpn-unicast
Holdtime: 90 Preference: 270 Local AS: 3 Local System AS: 0
Number of flaps: 0
Peer ID: 5.0.0.5 Local ID: 5.0.0.25 Active Holdtime: 90
Keepalive Interval: 30 Peer index: 0
BFD: disabled, down
NLRI for restart configured on peer: inet-unicast inet-vpn-unicast
NLRI advertised by peer: inet-unicast
NLRI for this session: inet-unicast
Peer supports Refresh capability (2)
Stale routes from peer are kept for: 300
Peer does not support Restarter functionality
NLRI that restart is negotiated for: inet-unicast
NLRI of received end-of-rib markers: inet-unicast
NLRI of all end-of-rib markers sent: inet-unicast
Peer supports 4 byte AS extension (peer-as 2)
Peer does not support Addpath
Table inet.0 Bit: 10001
RIB State: BGP restart is complete
Number of flaps: 0
Peer ID: 5.0.0.5 Local ID: 5.0.0.25 Active Holdtime: 90
Keepalive Interval: 30 Peer index: 0
BFD: disabled, down
NLRI for restart configured on peer: inet-unicast inet-vpn-unicast
NLRI advertised by peer: inet-unicast
NLRI for this session: inet-unicast
Peer supports Refresh capability (2)
Stale routes from peer are kept for: 300
Peer does not support Restarter functionality
NLRI that restart is negotiated for: inet-unicast
NLRI of received end-of-rib markers: inet-unicast
NLRI of all end-of-rib markers sent: inet-unicast
Peer supports 4 byte AS extension (peer-as 2)
Peer does not support Addpath
Table inet.0 Bit: 10001
RIB State: BGP restart is complete
Send state: in sync
Active prefixes: 0
Received prefixes: 0
Accepted prefixes: 0
Suppressed due to damping: 0
Advertized prefixes: 0
Last traffic (seconds): Received 5 Sent 5 Checked 5
Input messages: Total 3 Updates 1 Refreshes 0 Octets 128
Output messages: Total 3 Updates 0 Refreshes 0 Octets 128
Output Queue[0]: 0
    
```

- A. The peering session can pass inet-vpn routes.
- B. The peering session uses an altered route preference.
- C. The peering session is enabled for multihop support.
- D. The peering session is enabled for multipath support.

Answer: BC

QUESTION 5

Click the Exhibit button. Referring to the exhibit, which policy would be applied to the 75.217.12.10 neighbor?

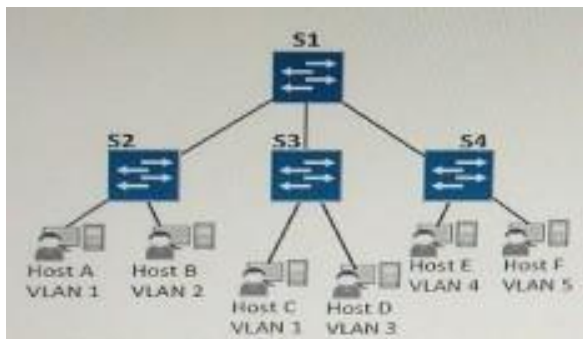
```
[edit protocols bgp]
user@host# show
export my-statics;
group my-group {
  type external;
  export my-aggregates;
  neighbor 176.241.12.4 {
    peer-as 396;
  }
  neighbor 75.217.12.10 {
    export my-specifics;
    peer-as 3275;
  }
}
```

- A. The my-statics policy would be applied.
- B. The my-aggregates policy would be applied.
- C. The my-specifics policy would be applied.
- D. The my-statics, my-aggregates, and my-specifics policies would be applied.

Answer: D

QUESTION 6

Click the Exhibit button. Referring to the exhibit, all interswitch links are configured as trunks supporting all VLANs. Host A sends a frame with an unknown destination MAC address to S2. Which switches will receive this frame?



- A. S1, S3 and S4
- B. S1 only
- C. S1 and S3 only
- D. S1 and S4 only

Answer: C

QUESTION 7

Which table will a Junos-based MPLS ingress router first consult to determine the next hop for BGP routes reachable through an LSP?

- A. inet.1

- B. mpls.0
- C. inet.3
- D. inet.0

Answer: D

QUESTION 8

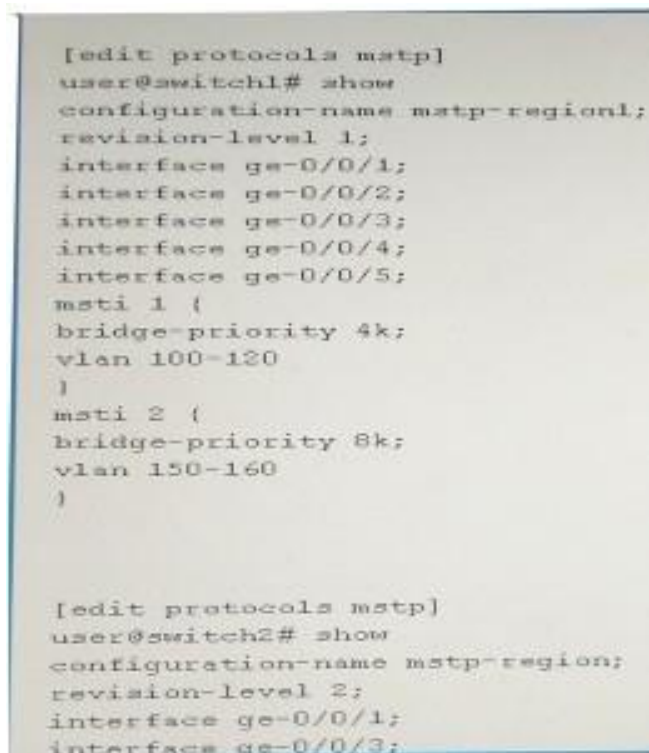
Which Layer 2 mechanism logically groups network nodes into separate broadcast domains?

- A. IS-IS levels
- B. OSPF areas
- C. VLAN
- D. IP subnets

Answer: C

QUESTION 9

Click the Exhibit button. Switch 1 and Switch 2 are configured to run MSTP. However, MSTP is not working. Referring to the exhibit, which two actions will correct the problem? (Choose two.)



```
[edit protocols mstp]
user@switch1# show
configuration-name mstp-region1;
revision-level 1;
interface ge-0/0/1;
interface ge-0/0/2;
interface ge-0/0/3;
interface ge-0/0/4;
interface ge-0/0/5;
msti 1 {
  bridge-priority 4k;
  vlan 100-120
}
msti 2 {
  bridge-priority 8k;
  vlan 150-160
}

[edit protocols mstp]
user@switch2# show
configuration-name mstp-region;
revision-level 2;
interface ge-0/0/1;
interface ge-0/0/3;
```

```
msti 1 {
  bridge-priority 4k;
  vlan 100-120
}
msti 2 {
  bridge-priority 8k;
  vlan 150-160
}

[edit protocols mstp]
user@switch2# show
configuration-name mstp-region;
revision-level 2;
interface ge-0/0/1;
interface ge-0/0/3;
interface ge-0/0/4;
interface ge-0/0/5;
msti 1 {
  bridge-priority 8k;
  vlan 100-120
}
msti 2 {
  bridge-priority 4k;
  vlan 150-160
}
```

- A. Configure interface ge-0/0/2 on Switch 2
- B. Correct the bridge-priority parameter to be identical on both switches.
- C. Configure revision-level 2 on Switch 1.
- D. Correct the configuration-name parameter to be identical on both switches.

Answer: CD

QUESTION 10

You are asked to configure a new LSP in your network. The new LSP must take a specific path using a given set of routers.

What must you do to accomplish this task?

- A. A named path must be defined and referenced as primary for the LSP.
- B. A named path must be defined and referenced as preferred for the LSP.
- C. A named path must be defined and given a low priority.
- D. A named path must be defined and given a high priority.

Answer: A

QUESTION 11

Which three IPv6 addresses are valid equivalents for the address 2001:0000:0000:0134:fc0e:cc8b:458a? (Choose three?)

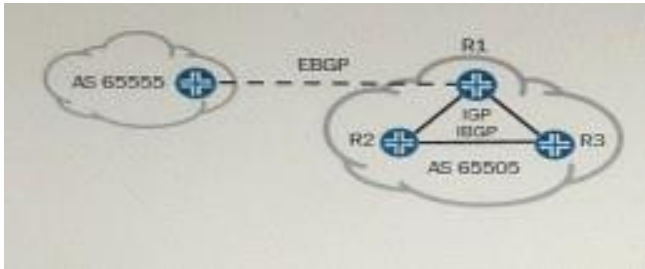
- A. 2001:134:fc0e:cc8b:458a

- B. 2001:0:0:0:0134:fc0e:cc8b:458a
- C. 2001:0:0:0:0134:fc0e:cc8b:458a
- D. 2001::134:fc0e:cc8b:458a
- E. 2001:0::0:134:fc0e:cc8b:458a

Answer: BDE

QUESTION 12

Click the Exhibit button. In the exhibit, R1, R2, and R3 are all IBGP peers within AS 65505. R1 receives a BGP advertisement from an external BGP peer in AS 65555, and BGP advertisement from R3. The default BGP advertisement behavior is in effect in this environment.



In this scenario, which two statements are true? (Choose two.)

- A. R1 will advertise the route received from R3 to R2 and its external BGP peer.
- B. R1 will advertise the route received from R3 only to its external BGP peer.
- C. R1 will advertise the route received from its external peer to R2 and R3.
- D. R1 will not advertise the route received from its external peer to R2 or R3.

Answer: BC

QUESTION 13

Which three statements are true about GRE and IP-IP tunnels? (Choose three.)

- A. All intermediary devices must have reachability to the tunnel endpoints.
- B. Tunnel endpoints must use the loopback interface for reachability.
- C. Tunnel endpoints must have a route that directs traffic into the tunnel.
- D. Tunnel endpoints must have a route to the remote endpoint learned by a dynamic routing protocol.
- E. Tunnel endpoints require a tunnel interface.

Answer: ACE

Thank You for Trying Our Product

Lead2pass Certification Exam Features:

- ★ More than **99,900** Satisfied Customers Worldwide.
- ★ Average **99.9%** Success Rate.
- ★ **Free Update** to match latest and real exam scenarios.
- ★ **Instant Download** Access! No Setup required.
- ★ Questions & Answers are downloadable in **PDF** format and **VCE** test engine format.
- ★ Multi-Platform capabilities - **Windows, Laptop, Mac, Android, iPhone, iPod, iPad**.
- ★ **100%** Guaranteed Success or **100%** Money Back Guarantee.
- ★ **Fast**, helpful support **24x7**.



View list of all certification exams: <http://www.lead2pass.com/all-products.html>



Microsoft



ORACLE



CITRIX



JUNIPER
NETWORKS



EMC²
where information lives®

10% Discount Coupon Code: ASTR14