



Vendor: IBM

Exam Code: SPS-100

Exam Name: IBMSPSSSTATL1P: IBM SPSS Statistics
Level 1

Version: DEMO

1. Which statement concerning IBM SPSS Statistics application windows is correct?
- A. At least one Data Editor window must be open in each IBM SPSS Statistics session
 - B. At least one Output Viewer must be open in each IBM SPSS Statistics session
 - C. At least one Syntax window must be open in each IBM SPSS Statistics session
 - D. Closing all open Syntax windows will result in the program automatically shutting down

Answer: A

2. Which of the following statements about the File...Save As dialog are wrong? (Choose two)

- A. By default, the file is saved as an IBM SPSS Statistics data file
- B. You can save your data in other formats, such as Excel, Text
- C. All variables in the Data Editor must be saved
- D. You can choose to save only a subset of cases

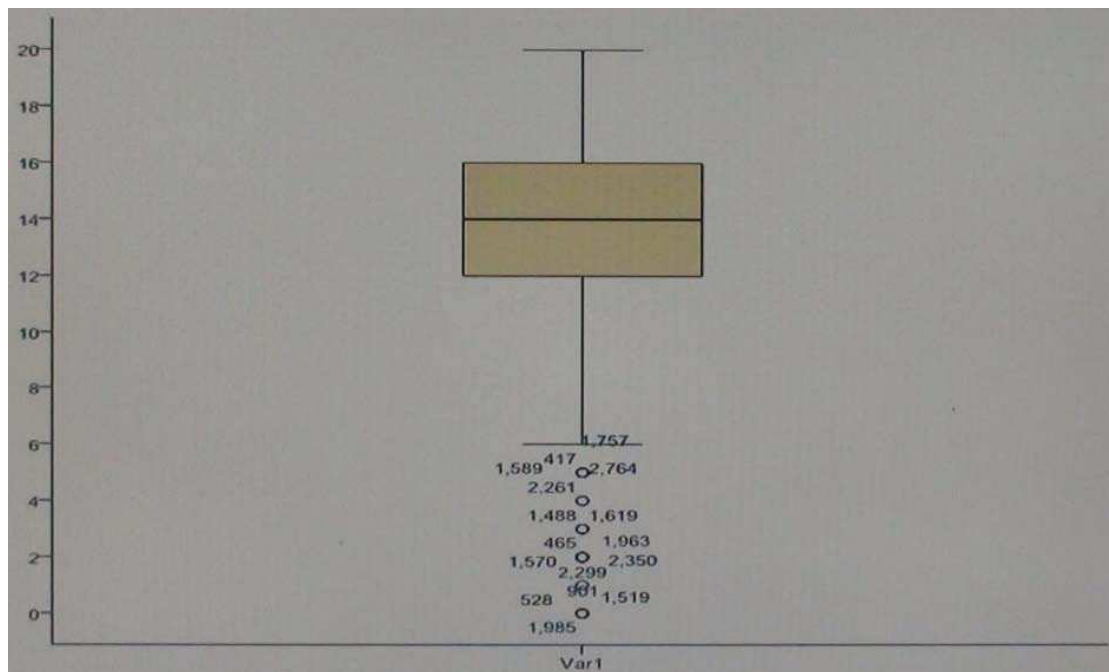
Answer: B,C

3. When performing CROSSTABS can control variables be added to the procedure?

- A. Yes, by placing the variables in the row box.
- B. Yes, by placing the variables in the column box.
- C. Yes, by placing the variables in the layer box
- D. No, control variables cannot be incorporated in a crosstabulation

Answer: A

4. Which statement is true about this box plot?



- A. The mean is 14.
- B. The standard deviation is 14 (20 minus 6)
- C. The standard deviation is 4 (16 minus 12).
- D. All of the outliers are on the lower end of the distribution

Answer: A

5. What type of graph would you use to see the distribution of a scale variable?

- A. Bar chart
- B. Pie chart
- C. Histogram
- D. Scatterplot

Answer: B

6. IBM SPSS Statistics system variables can be:

- A. Used in data transformations.
- B. Specified in analysis procedures.
- C. Modified using Compute Variable.
- D. Viewed in the Data Editor

Answer: B

7. Which statement is the correct interpretation of this crosstab table?

BELIEF IN LIFE AFTER DEATH * GENDER OF RESPONDENT Crosstabulation					
			GENDER OF RESPONDENT		Total
			Female	Male	
BELIEF IN LIFE AFTER DEATH	YES	Count	541	417	958
		% within BELIEF IN LIFE AFTER DEATH	56.5%	43.5%	100.0%
		% within GENDER OF RESPONDENT	86.0%	76.9%	81.8%
	NO	Count	88	125	213
		% within BELIEF IN LIFE AFTER DEATH	41.3%	58.7%	100.0%
		% within GENDER OF RESPONDENT	14.0%	23.1%	18.2%
	Total	Count	629	542	1171
		% within BELIEF IN LIFE AFTER DEATH	53.7%	46.3%	100.0%
		% within GENDER OF RESPONDENT	100.0%	100.0%	100.0%

- A. 56.5% of females believe in life after death
- B. 86.0% of females believe in life after death
- C. 27.5% of females believe in life after death
- D. 53.7% of females believe in life after death

Answer: D

8. After studying the figure below, select the correct statement.

	abany	age	aged	agedwed	amtests	attend	attspts	ball
1	2	43	1	20	3	2	2	
2	1	44	0	0	3	2	2	
3	1	43	1	25	2	7	2	
4	0	45	2	0	1	1	2	
5	1	78	0	0	1	2	1	
6	1	83	2	25	1	2	2	

- A. Gss93.sav is the dataset name.
- B. DataSet2 is the dataset name.
- C. DataSet2 is the file name.
- D. DataSet2 is both the file and dataset name.

Answer: A

9. The IBM SPSS Statistics Select Cases provides various ways to select cases included in further analysis. If you needed to conduct analysis on those respondents whose age is more than thirty years, earning in excess of \$40000, which option in this dialogue would you choose to specify these criteria?

- A. Random sample of cases
- B. Based on time or case range
- C. Use filter variable
- D. If condition is satisfied

Answer: B

10. What is the main advantage of using syntax?

- A. It can be run using the menus.
- B. It is the most popular way of running IBM SPSS Statistics.
- C. It can be saved and retrieved for subsequent analyses.
- D. It is the same format as syntax in other statistical software.

Answer: C