



**Vendor:** EMC

**Exam Code:** E20-495

**Exam Name:** Content Management xCelerated Composition  
Platform Application Development Exam

**Version:** DEMO

#### QUESTION 1

A package is designated as mandatory in a manual activity when the process template is designed. If at runtime no package has been associated with a process instance when that activity executes, what happens?

- A. The activity completes and the fault handler is invoked.
- B. The user is unable to acquire the task.
- C. The server will create a package and associate it with the activity.
- D. The user is unable to complete the activity.

**Answer: D**

#### QUESTION 2

How can a manual activity be configured to push tasks to a specific user if they are not completed within thirty minutes?

- A. Define Post-Timer on the activity and set its value to thirty minutes Choose Notification action Select the recipient to push the notification to
- B. Define Post-Timer on the activity and set its value to thirty minutes Choose Run JAVA Method action Select dm\_BPMReinitializeWQTask method
- C. Define Pre-Timer on the activity and set its value to thirty minutes Choose Run JAVA Method action Select dm\_BPMReinitializeWQTask method
- D. Define Post-Timer on the activity and set its value to thirty minutes Choose Delegate Task action Select the performer

**Answer: D**

#### QUESTION 3

A case management system requires that incident reports be submitted to the system by email. How can a process be designed to automatically identify the attachments and assign them to the correct object type?

- A. Include a custom activity to issue a CHANGE...OBJECT DQL statement on the attachment objects.
- B. Configure the ObjectType attribute in the attachments node Message Mapping section of the Inbound Email activity template.
- C. Create a Custom Email Template and configure the AttachmentObjectType property.
- D. Include a Process Data Mapping activity template that sets the r\_object\_type of the message body.

**Answer: B**

#### QUESTION 4

What is one way the queue\_admin role is different from the queue\_manager role?

- A. The queue\_admin can monitor and assign work queue items.
- B. The queue\_admin can create and manage work queues and their policies.
- C. The queue\_admin can select tasks from the work queue to work on.
- D. The queue\_admin can suspend and unsuspend queued items.

**Answer: B**

**QUESTION 5**

Which objects must be configured before creating a work queue?

- A. work queue policy and queue category
- B. work queue policy and work assignment matching
- C. work queue policy and override policy
- D. queue category and work assignment matching

**Answer: A**

**QUESTION 6**

In an xCP application, every queue processor is given one of two skills. A document review process has a package that has an attribute `required_skill` that is always set to one of those skills. What is the EMC best practice to ensure queue processors only receive tasks that match their skill?

- A. Create an ACL for each skill and add the appropriate users to each, then use a Process Data Mapper activity to map `required_skill` to the `acl_name` of the workitem.
- B. Create the skills on the queue's work queue policy, and then use an activity template to map `required_skill` to the queue assigned as the next activity's performer.
- C. Assign the queue as the performer of the manual activity, then use the data mapper tool to associate `required_skill` to the skill on the activity.
- D. Assign the queue as the performer of the manual activity and create an alias set for each skill, then store `required_skill` as the workflow alias and use the data mapper tool to assign the skill to the activity.

**Answer: C**

**QUESTION 7**

A parent business process invokes a child business process. Which change will definitely cause errors?

- A. adding a correlation identifier to the child process
- B. adding a new mandatory package to the child process
- C. adding a new structured data type to the child process
- D. adding a process parameter to the child process

**Answer: B**

**QUESTION 8**

How does a business process that uses asynchronous communication relate back to the original message?

- A. correlation sets
- B. triggered events
- C. unique `r_object_id` of the data package
- D. `JSESSIONID` set by initial message of the Java Method Server

**Answer: A**

**QUESTION 9**

An organization requires documents to be reviewed a variable number of times, which will be determined at runtime. To satisfy this requirement, the application developer has created a process template containing a simple loop.

According to EMC best practices, how should the loop iterations be managed?

- A. with a decrementing counter in a Process Data Mapping activity
- B. with conditional branching specified in a Decision Split activity
- C. with a Join activity that aggregates multiple flows
- D. with an automated method call that tracks the number of approvals

**Answer: A**

**QUESTION 10**

How can an application developer configure a process to allow a case worker to delegate a task?

- A. Click the Assign button in the activity's task form.
- B. Configure a Pre-Timer to delegate the task.
- C. Enable the option in the Performer tab within the Activity Inspector.
- D. Modify the Workflow Availability field on the user's properties screen in Documentum Administrator.

**Answer: C**

**QUESTION 11**

An application developer adds a structured data type to the process template which is visible across all activities. What should the developer do next so the added structured data type is available to an existing task template associated with an activity in the process?

- A. Open the Task template in Forms Builder.
- B. Use the Synchronize function in Process Builder.
- C. Refresh Structured Data Type in Process Builder.
- D. Use the Synchronize function in Forms Builder.

**Answer: A**

**QUESTION 12**

An application developer is configuring an SMTP activity template with the requirement to display the process variable claimnumber in the subject line. As an example, the subject line of the email should read as follows:

You have been assigned claim 123456

What should the application developer type in the Subject field of the activity template?

- A. You have been assigned claim \$claimnumber.
- B. "You have been assigned claim " + claimnumber.

- C. You have been assigned claim @claimnumber.
- D. You have been assigned claim {claimnumber}.

**Answer: A**

### QUESTION 13

What should an application developer configure in the task template to show the package content in line with a viewer?

- A. Add a viewer control on the task template and bind it to /Activity/.../<package name>/PackageId.
- B. Add a viewer control on the task template and bind it to /Activity/.../<package name>/DocumentId.
- C. Add an embedded form control on the task template and bind it to /Activity/.../<package name>/PackageId.
- D. Add an embedded form control on the task template and bind it to /Activity/.../<package name>/DocumentId.

**Answer: D**

### QUESTION 14

Consider the following hyperlink:

```
http://<server>:<port>/taskspace?objectId=<taskID>&appname=<appname>&doctype=<doctype>&docbase=<docbase>
```

The application developer needs to configure an email template for an activity that includes a hyperlink directly to the task item.

Which process data item needs to be mapped into the taskID placeholder in the URL?

- A. task.id
- B. task.qitem\_id
- C. workitem.id
- D. workitem.act\_id

**Answer: B**

### QUESTION 15

An application developer needs to re-use an activity in which input parameters differ across processes. How should the application developer accomplish this?

- A. by using an existing activity, then adding process parameters in the process properties Data tab
- B. by creating a new structured data type, then adding the input parameters to any activities in the process
- C. by creating a custom activity template, then defining the input parameters under the Properties tab
- D. by creating a custom activity template, then defining the input parameters under the Definition tab

**Answer: D**

### QUESTION 16

When creating a custom email template, the Notification Template Wizard can be accessed via the notification and which other tab in the Activity Inspector?

- A. Display
- B. Timer
- C. Transition
- D. Trigger

**Answer: B**

**QUESTION 17**

Form instances stored as XML content exist in a repository. Which type of change to the form template would require a new version to be created to ensure that the existing form instances remain valid?

- A. re-arranging the UI controls on the form
- B. adding a calculation formula
- C. removing a data item
- D. adding an image on the form

**Answer: C**

**QUESTION 18**

What is a difference between the storage mapping options for the Electronic Forms and for the High Fidelity Forms?

- A. Unlike High Fidelity Forms, Electronic Form storage mapping includes Store in repository attributes as an option.
- B. Unlike High Fidelity Forms, Electronic Form storage mapping includes Store as XML content as an option.
- C. Unlike Electronic Forms, High Fidelity Form storage includes Store in repository attributes as an option.
- D. Unlike Electronic Forms, High Fidelity Form storage includes Store as XML content as an option.

**Answer: A**

**QUESTION 19**

When using Forms Builder, an application developer has two form templates sharing the same data model. What type of change on one of the templates will invalidate the shared template?

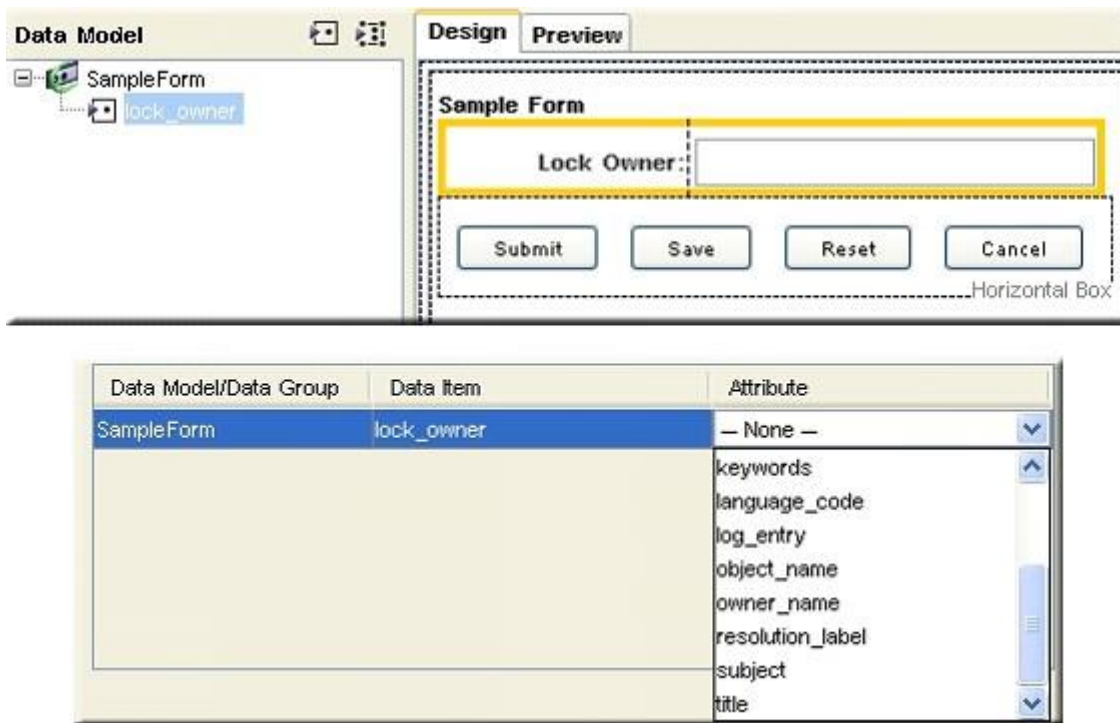
- A. renaming the form template
- B. modifying the storage mapping
- C. renaming a data item
- D. renaming a UI control

**Answer: C**

**QUESTION 20**

Refer to the exhibit. An application developer configures a form template in Forms Builder and

wants to display the read-only attribute `r_lock_owner` on the form. In the Storage Mapping dialog, `r_lock_owner` attribute does not appear in the list for the data item corresponding to the control. What should the application developer do so `r_lock_owner` can be displayed on the form?



- A. Change the data item name to `r_lock_owner` so the names match.
- B. Configure `r_lock_owner` attribute in the custom type definition to be editable.
- C. Grant the application developer the correct permission so the attribute is accessible.
- D. Replace the text field with a bound static text.

**Answer: D**

#### QUESTION 21

What is one benefit of using a shared data model?

- A. Data can be collected on one form and displayed on another form.
- B. Multiple users can work on the same form instance at the same time.
- C. Searches can be conducted on multiple levels.
- D. The same graphical resources can be shared across forms.

**Answer: A**

#### QUESTION 22

How is Forms adaptor code executed?

- A. Java on the TaskSpace Web Application Server
- B. JavaScript in the client browser
- C. Web Service calls to the Java Method Server

D. Java Applets in the client browser

**Answer: A**

### QUESTION 23

Refer to the exhibit. Which xPath expressions can create the following calculations in the table?

1. Calculate the Cost column as the product of the Quantity and the Price for the current row
2. Populate the Total field as the sum of all Cost rows in the table

- A. Cost column:  
`/xcp_cert_test_1/product_order/item_listing/quantity*/xcp_cert_test_1/product_order/item_listing/price`  
 Total field: `sum(/xcp_cert_test_1/product_order/item_listing/cost)`
- B. Cost column:  
`/xcp_cert_test_1/product_order/item_listing/quantity*/xcp_cert_test_1/product_order/item_listing/price`  
 Total field: `sum(//item_listing/cost)`
- C. Cost column: `../quantity*../price`  
 Total field: `sum(/xcp_cert_test_1/product_order/item_listing/cost)`
- D. Cost column: `../quantity*../price`  
 Total field: `sum(//item_listing/cost)`

**Answer: C**

### QUESTION 24

When are Document Validators run?

- A. only when the form is submitted
- B. only when the form is checked out
- C. when the form is saved or submitted
- D. when the form is saved or checked out

**Answer: C**



**QUESTION 25**

Which deployment strategy ensures that custom adaptor code is automatically deployed by xCP?

- A. packaged as a TBO
- B. packaged as a Standard Object
- C. packaged as a SBO
- D. packaged as a POJO

**Answer: C**

**QUESTION 26**

A consultant needs to create a form that shows information for an employee in a firm, including the department in which the employee works. The company has a list of departments in an external database.

Which type of adaptor should be used to populate a list box with all of the departments?

- A. Data Source
- B. Document Processor
- C. Item Initializer
- D. SetValue

**Answer: A**

**QUESTION 27**

Consider the following information: According to EMC best practices, how can these business requirements be implemented?

- A. Implement a custom Item Validator and a custom Document Validator.
- B. Implement a custom Document Validator and a custom Document Processor.
- C. Use a StartWorkflowProcessor Document Processor to start a workflow to perform the logic.
- D. Implement a custom Document Processor to validate and modify the document.

**Answer: D**

**QUESTION 28**

When an adaptor configuration is marked as Global Adaptor, which other templates can use the adaptor?

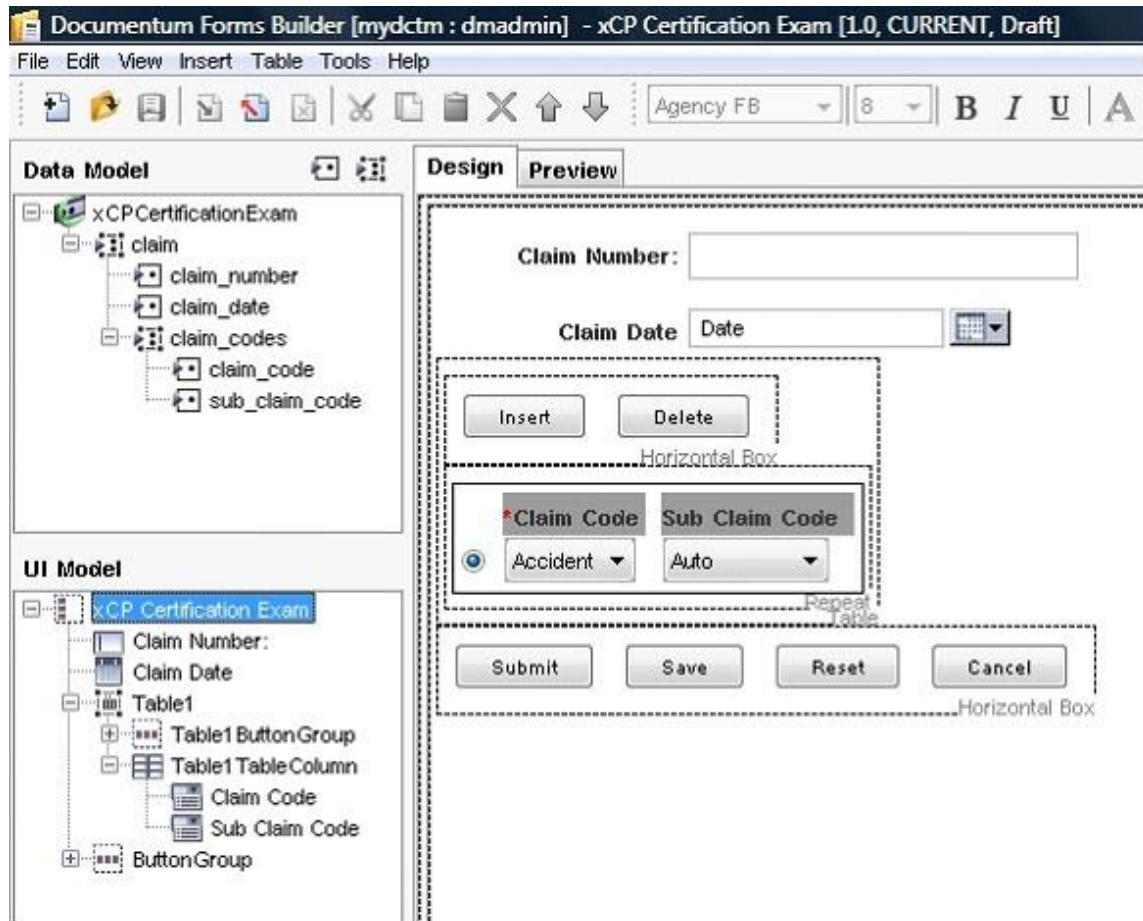
- A. all other templates in the Composer Project
- B. all other templates in the xCP application
- C. all other templates in the repository
- D. all other templates registered with the global repository

**Answer: C**

**QUESTION 29**

Refer to the exhibit. A form contains two sets of repeating fields where the list of possible values

for the nth sub\_claim\_code is dependent on the value of the corresponding nth claim\_code. Which design approach should be used to implement this requirement?



- A. Use the out-of-the-box repository data source adaptor.
- B. Rework the design to create a single repeating field that combines the values of both.
- C. Develop custom data source adaptors.
- D. Develop a custom document processor.

**Answer: B**

## Thank You for Trying Our Product

### Lead2pass Certification Exam Features:

- ★ More than **99,900** Satisfied Customers Worldwide.
- ★ Average **99.9%** Success Rate.
- ★ **Free Update** to match latest and real exam scenarios.
- ★ **Instant Download** Access! No Setup required.
- ★ Questions & Answers are downloadable in **PDF** format and **VCE** test engine format.
- ★ Multi-Platform capabilities - **Windows, Laptop, Mac, Android, iPhone, iPod, iPad**.
- ★ **100%** Guaranteed Success or **100%** Money Back Guarantee.
- ★ **Fast**, helpful support **24x7**.



View list of all certification exams: <http://www.lead2pass.com/all-products.html>



**10% Discount Coupon Code: ASTR14**