



Vendor: Citrix

Exam Code: 1Y0-A22

Exam Name: Citrix XenApp 6.5 Advanced Administration

Version: DEMO

QUESTION 1

Scenario: a recent Security breach occurred in which a member of staff was able to copy company confidential information onto a device which was then removed from company premises.

A Citrix Administrator has been instructed to disable client drive mapping when staff using corporate issued domain-member laptops attempt to access XenApp resources.

Which section of the ICAClient template file must the administrator configure to facilitate this guest?

- A. Client Engine
- B. User Experience
- C. User authentication
- D. Remoting Client Devices

Answer: D

QUESTION 2

Scenario: when users attempt to connect a XenApp resource, they are often presented with a warning asking if they want to overwrite the existing launch ICA file. Users only experience this when using the intranet portal to connect their XenApp resources.

An administrator has identified that the 'Launch ICA' connection file is not deleted when a user disconnects or logs off from their session.

Which tool should the administrator use to ensure that the launch ICA file is removed when a session is disconnected or logged off?

- A. Citrix AppCenter
- B. ICA Listener Configuration
- C. Microsoft Group Policy Editor
- D. Citrix Web Interface management Console

Answer: D

QUESTION 3

Scenario: an administrator has added an additional XenApp server to an existing zone in preparation for an expected period of bad weather disruption. This is to ensure that additional load can be managed. The server has been prepared from an existing clone with changes made in accordance with company policy. Once the new server has been brought online, Edgesight alerts appear indicating "Zone Data Collector Election triggered".

An investigation shows that the new server is now the data collector for the zone.

The administrator has searched in the configuration log file and viewed the history using CitrixCenter.

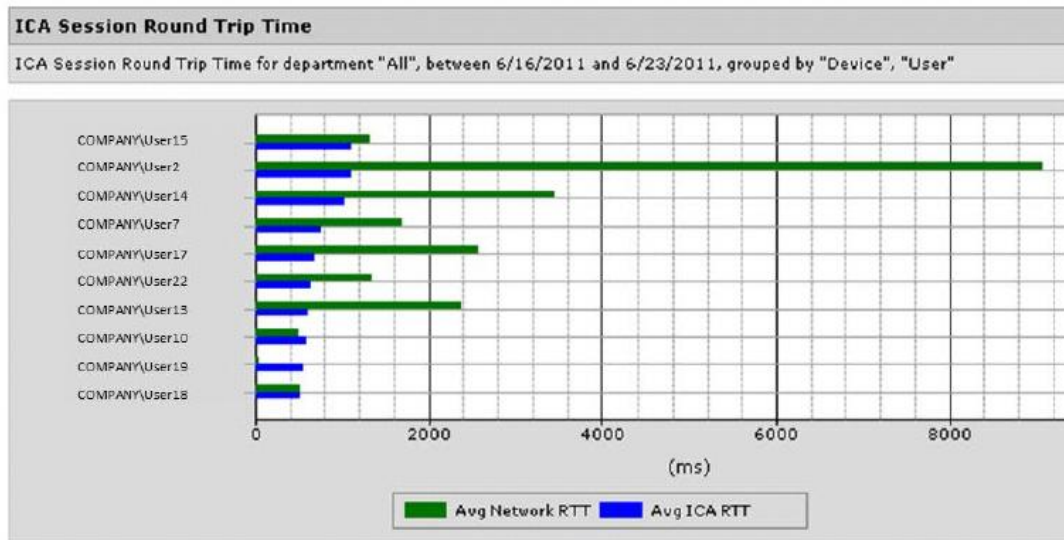
Which setting needs to be changed to run the data collector to the original server?

- A. load evaluator
- B. zone default setting
- C. load balancing policy
- D. worker group membership

Answer: B

QUESTION 4

An administrator pulls the ICA Session Round Trip Time report in the attached exhibit from EdgeSight.
Click the Exhibit button to view the attached exhibit.



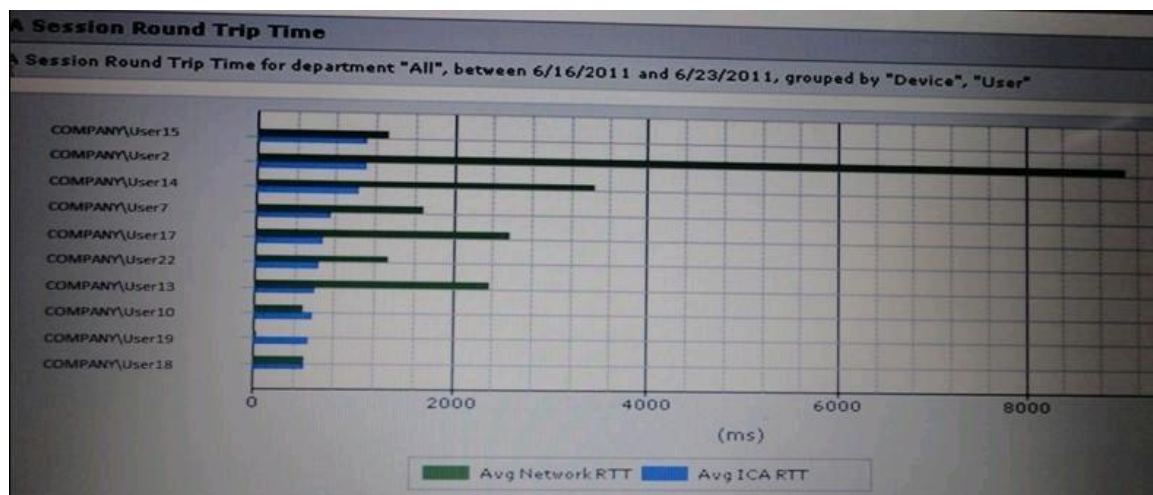
What can the administrator deduce about the user experience?

- A. USB devices cannot be redirected for all of these users
- B. For Users 15, 2 and 14, USB devices cannot be redirected
- C. HDX Flash configured through default settings will run on the server
- D. HDX Flash configured through default settings will run on the client device

Answer: C

QUESTION 5

Refer to the exhibit. XenApp Administrator would like to centrally deploy a plug-in using Merchandising Server.



Which two steps should the administrator take to achieve this? (Choose two)

- A. Download the plug-in to the client
- B. Create deliveries to deploy the plug-in.
- C. Create an MSI package to deploy the plug-in
- D. Download the plug-in to Merchandising Server

Answer: BD

QUESTION 6

A XenApp Administrator needs to set up monitoring between a Web Interface server and the back-end XenApp.

Which component should the administrator monitor?

- A. ICA Listener
- B. Citrix IMA Service
- C. Local Host Cache
- D. Citrix XML Service

Answer: D

QUESTION 7

Scenario: An administrator deployed a new application on all the XenApp servers.

The administrator needs to set up an alert to be notified if the application takes up the CPU time and RAM XenApp servers.

Which alert must be administrator configure?

- A. Thrashing application
- B. Application performance
- C. High application resource usage
- D. Health Monitoring and Recovery Action Failure

Answer: C

QUESTION 8

An administrator can use Microsoft Excel with CitrixEdgeSight to provide _____ report.

- A. a real time
- B. a network latency
- C. the XenApp user summary
- D. an Online plug-in version list

Answer: A

QUESTION 9

Scenario: the Senior Citrix Administrator has required that a Junior Administrator deploy two XenApp servers using a base XenApp image that he previously created.

The servers will be assigned to two different departments with additional applications that will be installed later based on department requirements.

What should the junior administrator do to meet these requirements?

- A. Manually install XenApp on the new XenApp servers.
- B. Clone the base XenApp image and deploy to new XenApp servers
- C. Use Windows Deployment Services to deploy XenApp to new XenApp servers.
- D. Use Provisioning Services to stream XenApp servers in standard to new XenApp servers.

Answer: C

QUESTION 10

Lab Simulation

Scenario: In the Xirtic call center environment, the IT team needs to have an easy way to dynamically provision the XenApp servers and streamline the application publishing process. The IT team also needs to ensure that users are able to access the best available resources when they connect to the environment.

All the XenApp servers are currently in a computer OU named XenApp Servers.

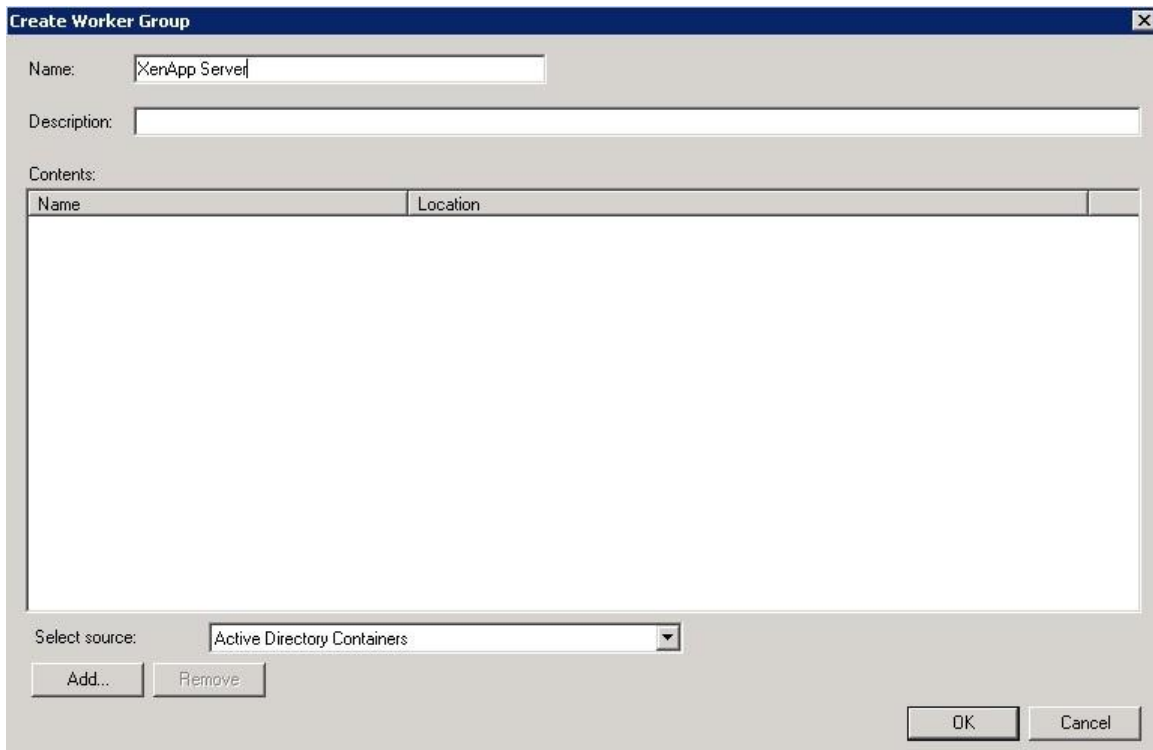
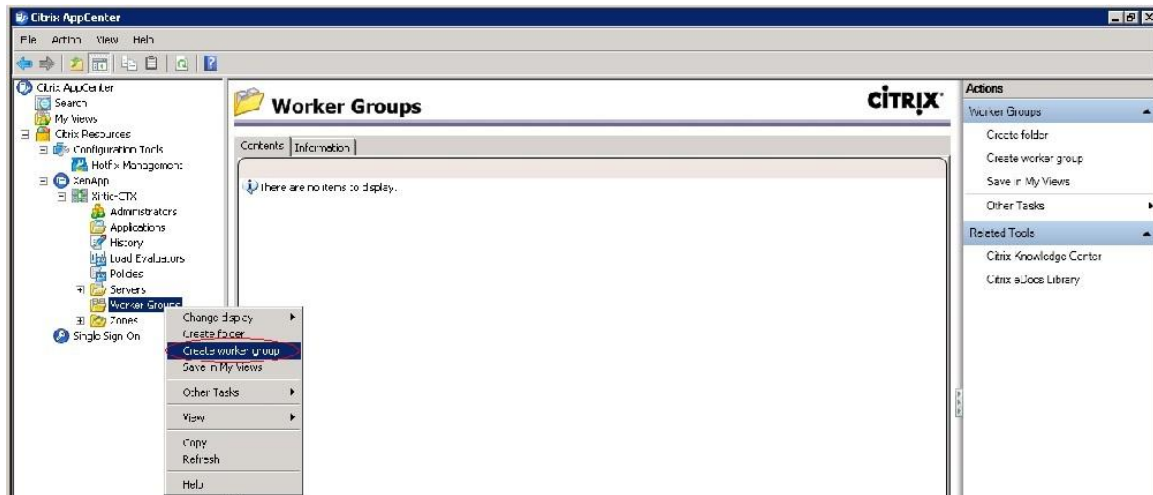
Tasks:

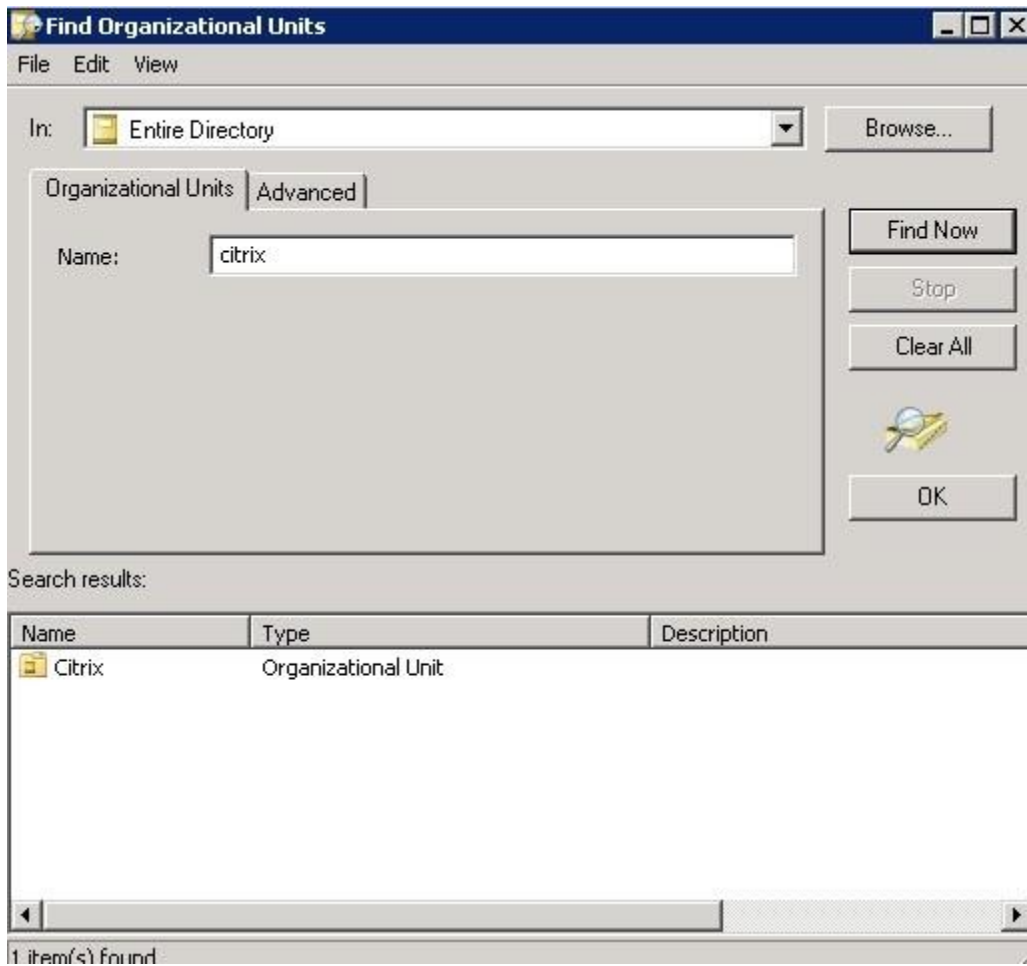
1. Create a worker group named XenApp Servers.
2. Create a Load evaluator to the XenApp Servers worker group.
3. Assign the load evaluator to the XenApp Servers worker group.
4. Provide the Active Directory Security Group named Call Center users with a published desktop of XenApp server. Name the published desktop Call Center Users.

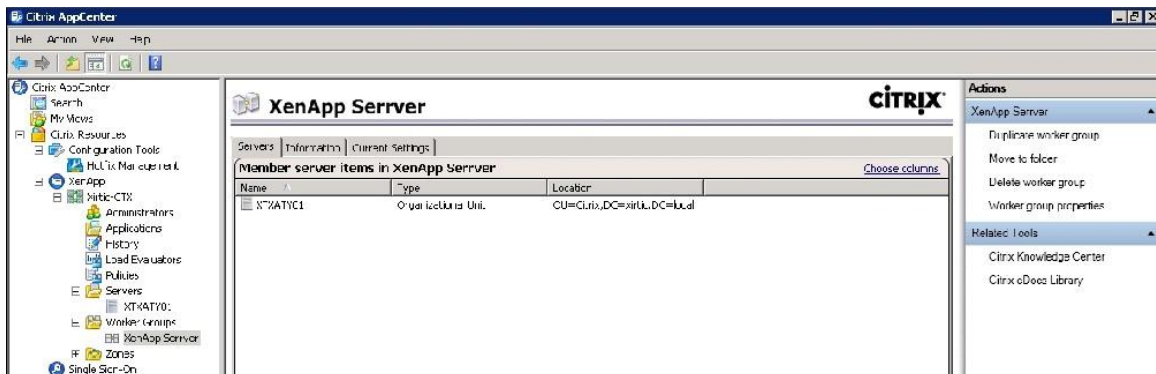
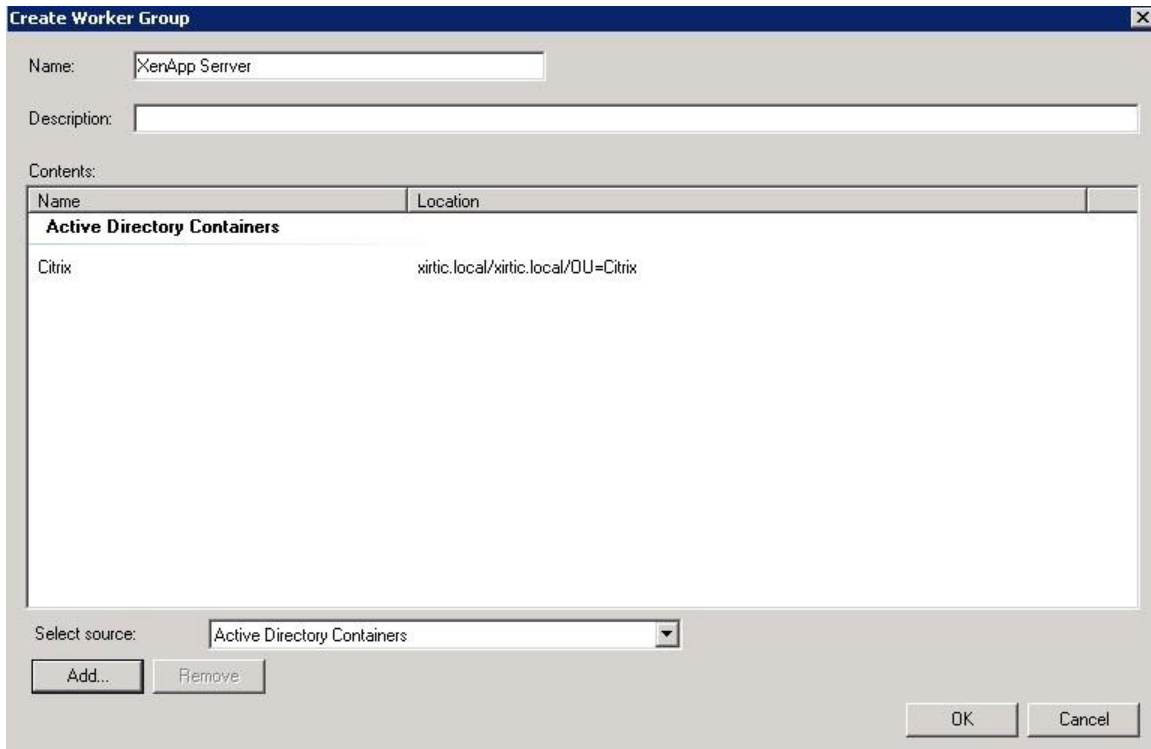


Answer:

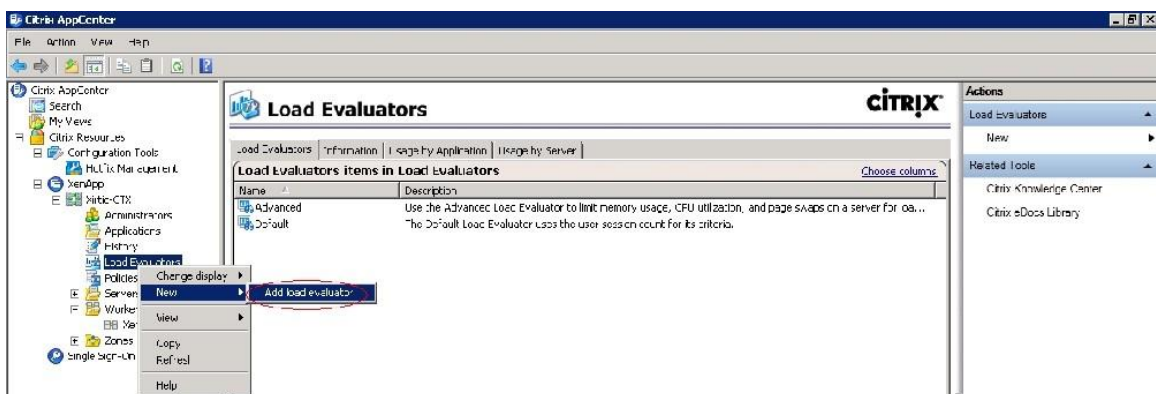
Here are the step by step solution to this.
Use the following
Task 1:

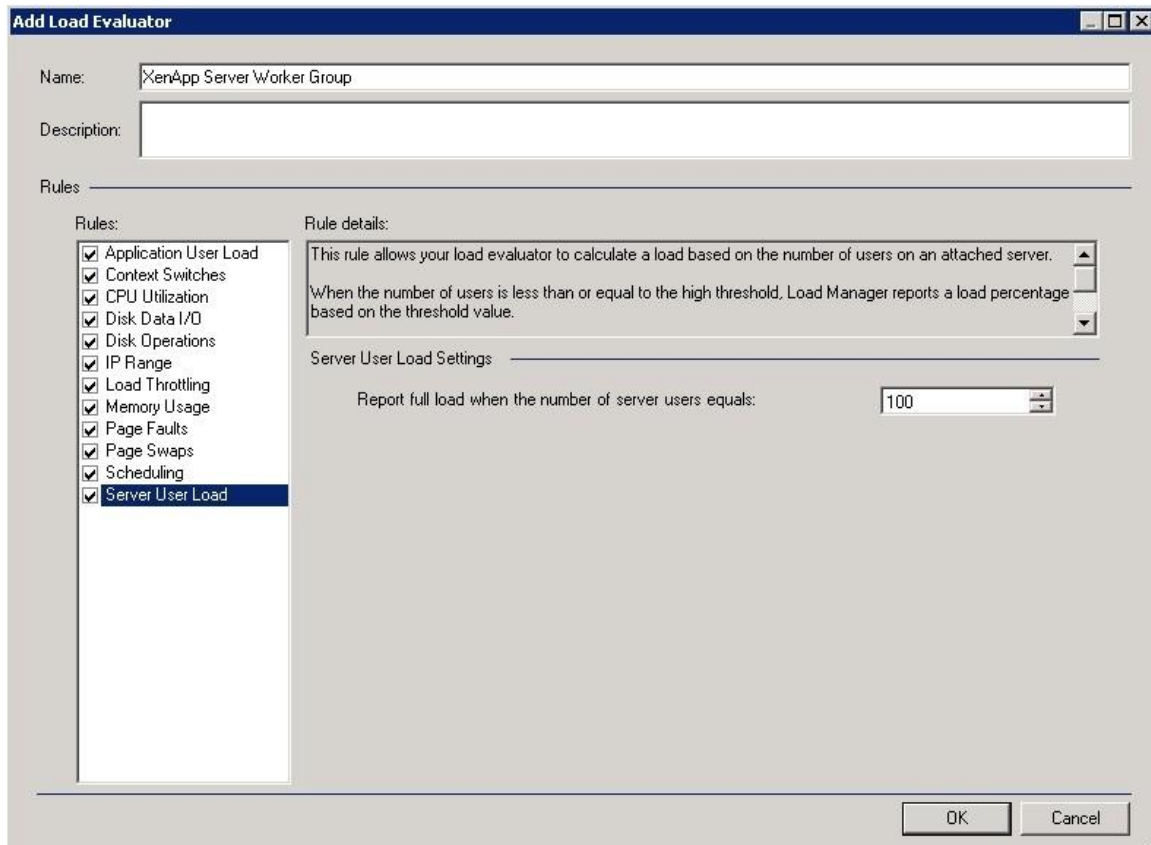






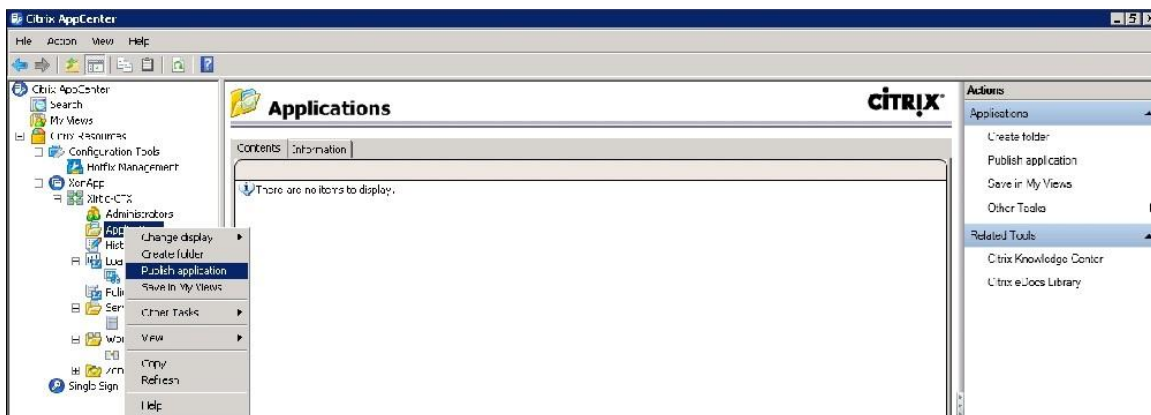
Task 2:

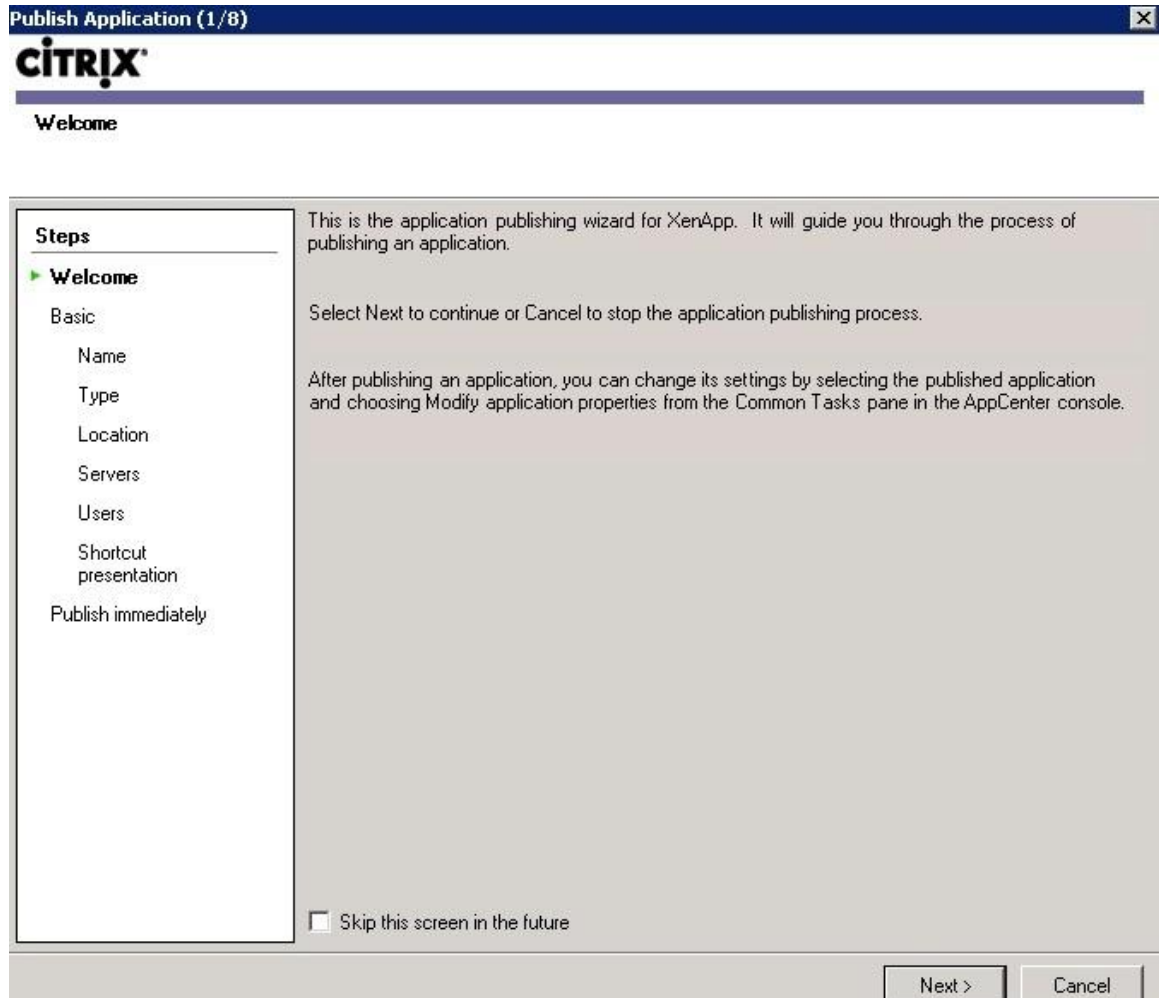




Task 3

Task 4





Call Center Users - Publish Application

CITRIX

Name

Steps

- ✓ Welcome
- Basic**
 - ▶ **Name**
 - Type
 - Location
 - Servers
 - Users
 - Shortcut presentation
 - Publish immediately

Enter the name and description that you want to be displayed to clients for this application.

Display name:
Call Center Users

Application description:
Call Center Users

< Back Next > Cancel

Call Center Users - Publish Application (3/7)

Type
View the application type. To change the type, use the Change application type task.

Steps

- ✓ Welcome
- Basic**
 - ✓ Name
 - ▶ **Type**
 - Servers
 - Users
 - Shortcut presentation
 - Publish immediately

Choose the type of application to publish.

☒ Server desktop

☐ Content

☐ Application

Application type

☒ Accessed from a server

☐ Streamed if possible, otherwise accessed from a server

Server application type:

Installed application

☐ Streamed to client

Note: To change the application type after publishing it, you must use the Change Application Type task.

Quick Help

Grants users access to an entire server desktop including resources and applications available from desktop menus and shortcuts.

< Back

Next >

Cancel

Call Center Users - Publish Application (4/7)

CITRIX

Servers
Configure which servers will host the application.

Choose the servers on which this published application will run when being delivered via ICA.

Servers:

Name	Relative location
XenApp Server	Worker Groups

1 item

Add... Remove Import from file...

< Back Next > Cancel

Call Center Users - Publish Application (5/7)

CITRIX

Users
Configure the users who may access the application.


Steps

- ✓ Welcome
- Basic**
- ✓ Name
- ✓ Type
- ✓ Servers
- Users**
- Shortcut presentation
- Publish immediately

Specify the users who can access this application.
To add users, choose a directory type at the bottom and select Add. [More...](#)

☐ Allow anonymous users
☒ Allow only configured users

Configured users:

 Call Center users (XIRTIC\Call Center users)

Select directory type:

< Back Next > Cancel

Call Center Users - Publish Application (6/7)

Shortcut presentation

Steps

✓ Welcome

Basic

✓ Name

✓ Type

✓ Servers

✓ Users

Shortcut presentation

Publish immediately

Configure the appearance and location of the application shortcut.

These settings function differently on different clients. [More...](#)

Application icon

Icon:

Client application folder:

Application shortcut placement

☐ Add to the client's Start menu

Start menu folder (Citrix XenApp plugin only):

☐ Add shortcut to the client's desktop

< Back

Next >

Cancel

Call Center Users - Publish Application (7/7)

CITRIX

Publish immediately

Steps

✓ Welcome

✓ Basic

✓ Name

✓ Type

✓ Servers

✓ Users

✓ Shortcut presentation

► Publish immediately

The essential settings for this application have been configured.

When the wizard is finished, the application will be available to the configured users immediately. If you don't want the application to be available immediately, you can disable it until you are ready.

☐ Disable application initially

Advanced application settings default to the most common settings and are not required to be set for the application to be available to users. You can configure these settings now, or you can configure them later using the application Properties tasks.

☐ Configure advanced application settings now

< Back

Finish

Cancel

Thank You for Trying Our Product

Lead2pass Certification Exam Features:

- ★ More than **99,900** Satisfied Customers Worldwide.
- ★ Average **99.9%** Success Rate.
- ★ **Free Update** to match latest and real exam scenarios.
- ★ **Instant Download** Access! No Setup required.
- ★ Questions & Answers are downloadable in **PDF** format and **VCE** test engine format.
- ★ Multi-Platform capabilities - **Windows, Laptop, Mac, Android, iPhone, iPod, iPad**.
- ★ **100%** Guaranteed Success or **100%** Money Back Guarantee.
- ★ **Fast**, helpful support **24x7**.



View list of all certification exams: <http://www.lead2pass.com/all-products.html>



Microsoft



ORACLE



CITRIX



JUNIPER
NETWORKS



EMC²
where information lives®

10% Discount Coupon Code: ASTR14