



Vendor: Check Point

Exam Code: 156-815.70

Exam Name: Check Point Certified Managed Security
Expert R70

Version: DEMO

QUESTION 1

Which operating system listed supports running a Multi-Domain Management with Provider-1 MDS, but has a limitation in the number of virtual IP addresses which can be assigned to a given interface?

- A. Red Hat Enterprise Linux
- B. Windows 2003 Server
- C. SecurePlatform
- D. Solaris

Answer: D

QUESTION 2

Which of the following systems would meet the MINIMUM requirements for an MDS?

- A. SecurePlatform, 10 GB hard drive
- B. SecurePlatform, 2-GB hard drive, 8 MB memory
- C. Solaris 9, 4-GB hard drive, 1 GB memory
- D. Linux RHEL 5, 2.4 kernel, 4-GB hard drive, 4-GB memory

Answer: A

QUESTION 3

What is the partial path for the CMA's bin directory, where \$FWDIR is the symbolic link?

- A. /opt/CPshared-R70/bin
- B. /opt/CPmds-R70/bin
- C. /CPsuite-R70/fw1/bin
- D. \$FWDIR/bin on the MDS level

Answer: C

QUESTION 4

What file contains the Global Policy Rule Base?

- A. rulebases_5_0.fws
- B. rulebases_5_0.C
- C. rulebases_5_0.fwz
- D. objects_5_0.C

Answer: A

QUESTION 5

Which of the following statements is TRUE about Multi-Domain Management with Provider-1?

- A. Provider-1 encrypts all traffic among modules - so no firewall is necessary to protect the Provider-1 system.
- B. The MDS Manager has a built-in firewall for the Provider-1 system, protecting the MDS Containers.

- C. The added security of a firewall to protect the Provider-1 system is difficult to implement, and is not recommended.
- D. A separately managed Security Gateway is recommended to protect the Provider-1 environment.

Answer: D

QUESTION 6

On which SecurePlatform kernel version is Multi-Domain Management with Provider-1 R70 built?

- A. 2.4.18
- B. 2.6.18-92
- C. 2.4.21-21
- D. RHEL 3

Answer: B

QUESTION 7

What is the name for the interface connecting CMA Virtual IPs?

- A. Leading VIP Interface
- B. VIP Lounge Interface
- C. Main External Interface

Answer: A

QUESTION 8

Communication between the MDG and the MDS is secured in what way?

- A. IKE encryption using shared secret
- B. Configurable third-party authentication mechanism
- C. Username and Password authentication
- D. SSL initiated using SIC certificate exchange

Answer: D

QUESTION 9

All of the following can be configured on a Multi-Domain Management with Provider-1 MDS, EXCEPT:

- A. Analyze logs
- B. Firewall Module
- C. Firewall Manager
- D. Customer Logging Module

Answer: B

QUESTION 10

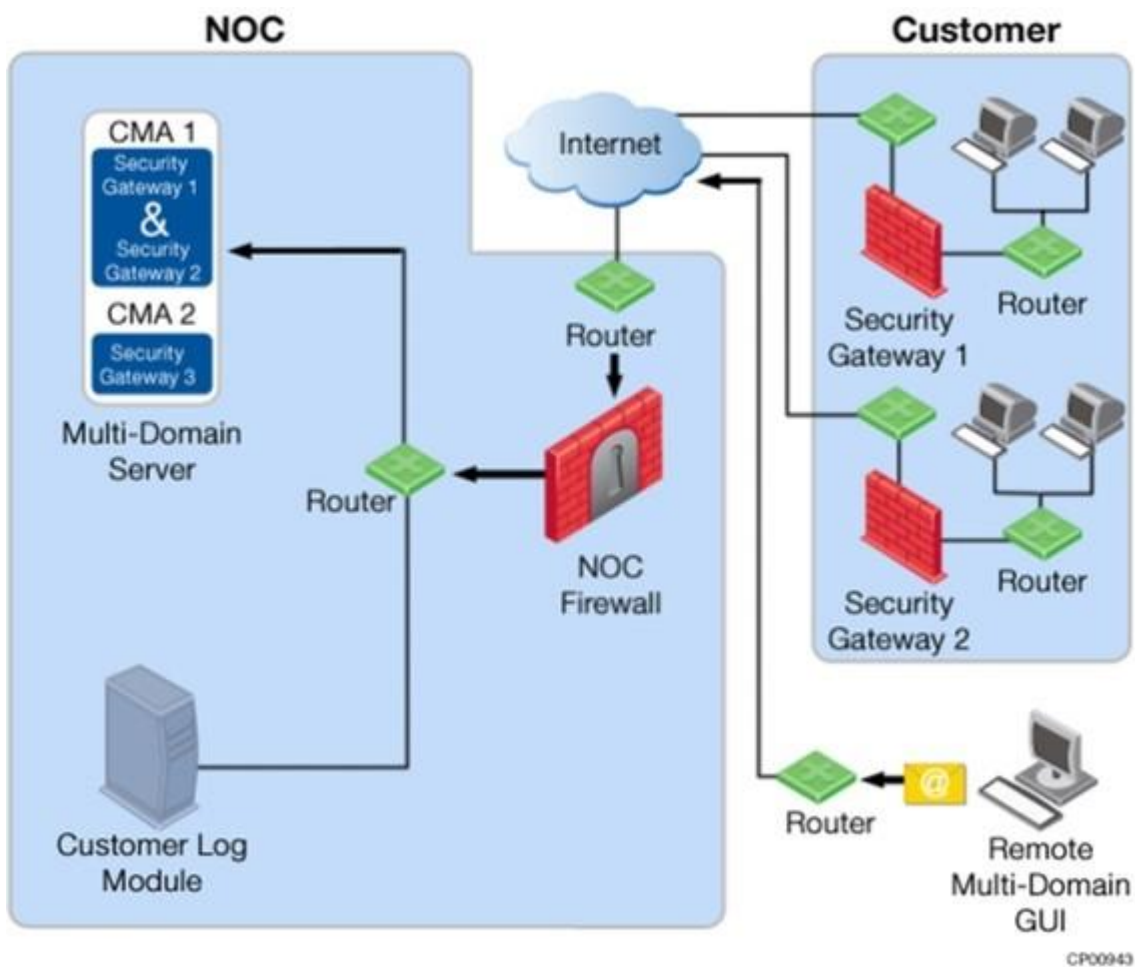
When does a SIC certificate expire for CMA/MDS?

- A. After 3 years
- B. After 5 years
- C. The interval is configurable.
- D. After 1 year

Answer: B

QUESTION 11

When a NOC firewall separates the Multi-Domain Management with Provider-1 MDS machine and the MDG (as shown below), what must be done to allow the MDG to connect to the MDS?



Modify the NOC Security Gateway Rule Base to allow:

- A. RPC traffic for the MDG.
- B. CPD and CPD_amon traffic to pass between the MDG and the MDS.
- C. UDP traffic for the MDG.
- D. CPMI traffic to pass between the MDG and the MDS.

Answer: D

QUESTION 12

Which of the following ports is used by CPML to communicate between Multi-Domain Management with Provider-1 modules?

- A. TCP port 260
- B. TCP port 264
- C. TCP port 18191
- D. TCP port 18190

Answer: D

QUESTION 13

When debugging the fwm process at the MDS level, what file is created?

- A. \$FWDIR/log/fwm.elg and fwm.log
- B. /var/opt/CPsuite-R70/fw1/log/mds.elg and /var/opt/CPmds-R70/log/mds.log
- C. /var/opt/CPsuite-R70/fw1/log/fwm.elg and fwm.log
- D. \$CPDIR/log/debug.elg

Answer: B

QUESTION 14

When debugging the fwm process at the MDS level, what file is created?

- A. fwm.log
- B. mds.error
- C. mds.log
- D. fwm.elg

Answer: C

QUESTION 15

What information can NOT be obtained from the mdsstat output?

- A. Hostname of the MDS
- B. Up / down status
- C. IP address of the CMA
- D. PID number FWD

Answer: A

Thank You for Trying Our Product

Lead2pass Certification Exam Features:

- ★ More than **99,900** Satisfied Customers Worldwide.
- ★ Average **99.9%** Success Rate.
- ★ **Free Update** to match latest and real exam scenarios.
- ★ **Instant Download** Access! No Setup required.
- ★ Questions & Answers are downloadable in **PDF** format and **VCE** test engine format.
- ★ Multi-Platform capabilities - **Windows, Laptop, Mac, Android, iPhone, iPod, iPad**.
- ★ **100%** Guaranteed Success or **100%** Money Back Guarantee.
- ★ **Fast**, helpful support **24x7**.



View list of all certification exams: <http://www.lead2pass.com/all-products.html>



Microsoft



ORACLE



CITRIX



JUNIPER
NETWORKS



EMC²
where information lives[®]

10% Discount Coupon Code: ASTR14