



**Vendor:** Microsoft

**Exam Code:** 70-323

**Exam Name:** Administering Office 365

**Version:** DEMO

#### QUESTION 1

Your company has a Microsoft Exchange Server 2003 organization. Users access their mailbox by using RPC over HTTP and Exchange ActiveSync. You purchase an Office 365 subscription. From the Office 365 portal, you create and verify the accepted domain of the company. From the Exchange Control Panel, you attempt to migrate all of the mailboxes to Microsoft Exchange Online and you receive an error message indicating that the remote server is unavailable. You need to identify what prevents the mailboxes from migrating. Which tool should you use?

- A. the Microsoft Remote Connectivity Analyzer
- B. the Exchange Server Deployment Assistant
- C. the Office 365 Deployment Readiness Tool
- D. the Microsoft Online Services Directory Synchronization Configuration Wizard

**Answer: A**

#### QUESTION 2

Your company has an intranet site that is hosted on Microsoft SharePoint Online. The site is currently available in English only. You need to make sure that users can navigate the intranet site in English and in German. What should you do?

- A. Modify the Regional settings of the intranet site.
- B. Activate the SharePoint Server Enterprise Site Collection Features.
- C. From the term store, modify the Working Languages.
- D. From the term store, change the default language.
- E. Modify the Language settings of the intranet site.
- F. Activate the SharePoint Server Publishing Infrastructure feature.

**Answer: B**

#### QUESTION 3

Your company has a Microsoft SharePoint Online environment. The department field of each user profile contains the department of the user. All users have Office 2010 installed on their client computer. The marketing department has a Shared Documents library named MarkDocs. You need to ensure that users in the marketing department can select the MarkDocs library from the Save to SharePoint command in Microsoft Word. Other users must not see the MarkDocs library as a default option from the Save to SharePoint command. What should you do? (Each correct answer presents part of the solution. Choose all that apply.)

- A. From Publish links to Office client applications, create a link.
- B. Create a SharePoint group for the marketing department.
- C. From the Configure Personalization Site, create a link.
- D. Create an Audience for the marketing department.

**Answer: AD**

#### QUESTION 4

Your company has a site named Site1 that is hosted on Microsoft SharePoint Online. You need to ensure that each user can fulfill the requirements shown in the following table. The solution must minimize the number of permissions assigned to each user. Which permission should you assign to each user? To answer, drag the appropriate permission to the correct user in the answer area.

User name	Requirements
User1	View, add, update, delete, and approve items and manage lists.
User2	View, add, update, and delete list items.
User3	View pages and list items and download documents.

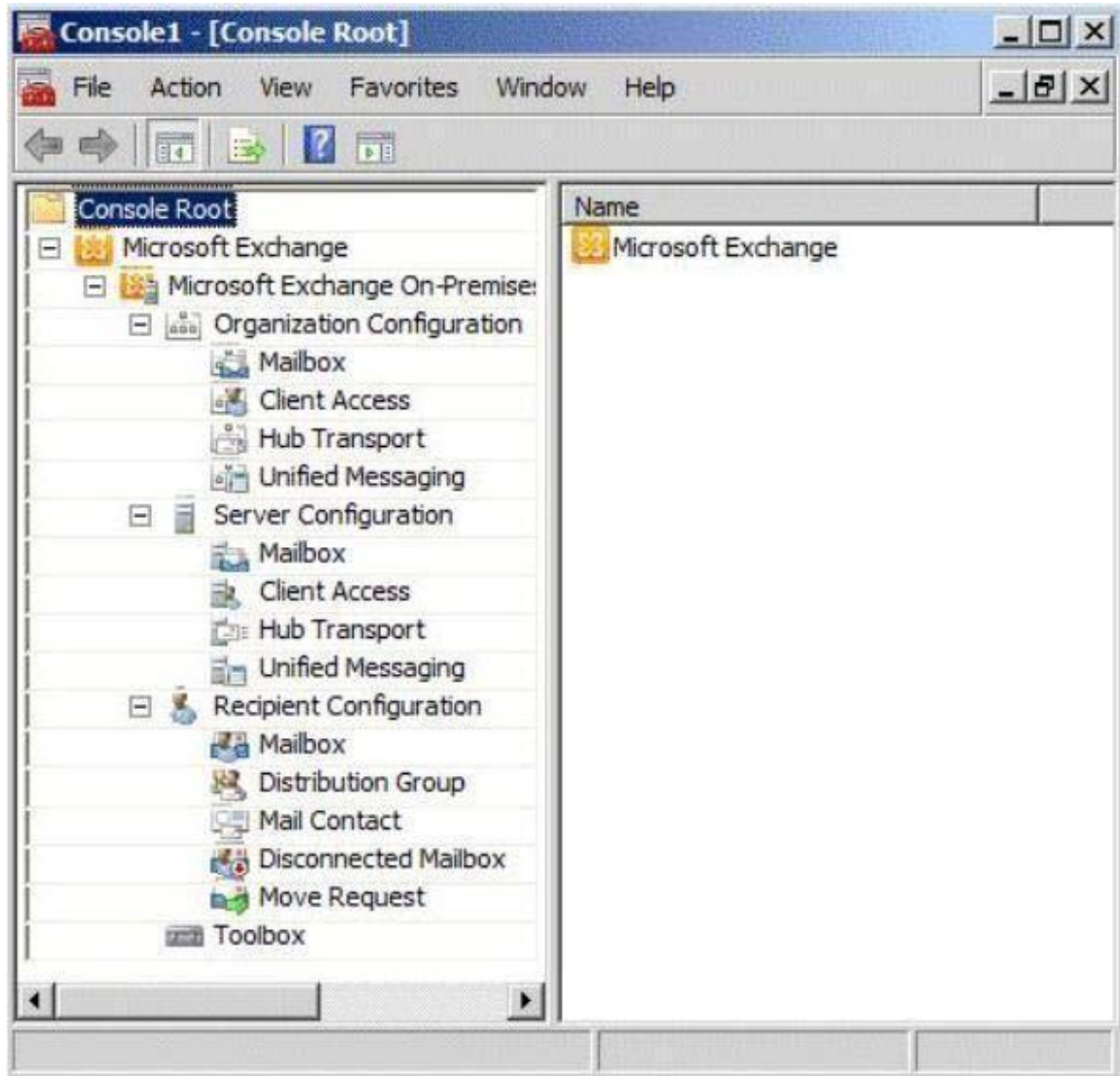
Permissions	Answer Area
Approve	Permission <b>User1</b>
Contribute	Permission <b>User2</b>
Design	Permission <b>User3</b>
Full Control	
Manage Hierarchy	
Read	
View Only	

**Answer:**

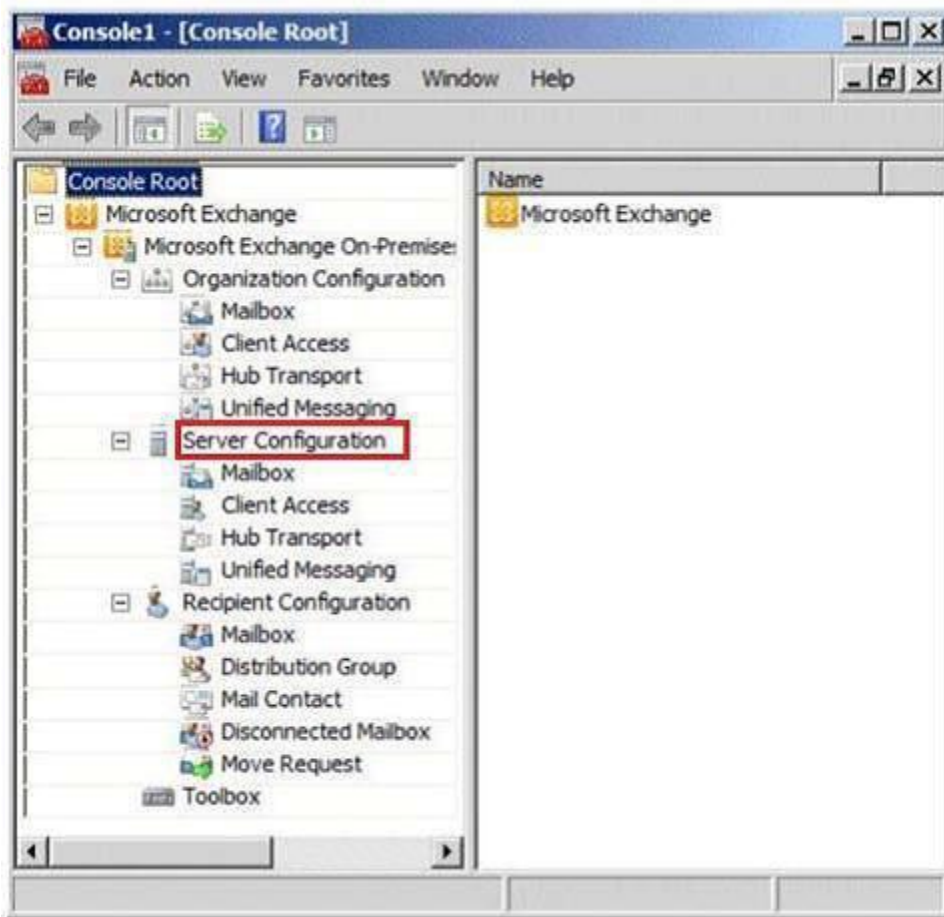
Permissions	Answer Area
Approve	
	Design <b>User1</b>
	Contribute <b>User2</b>
	Read <b>User3</b>
Full Control	
Manage Hierarchy	
View Only	

#### QUESTION 5

Your company has a hybrid deployment of Office 365. You install the Exchange Management Console on a client computer. You plan to use the client computer to manage the Microsoft Exchange Server 2010 organization only. You need to ensure that the Exchange Management Console can connect to any available server if an Exchange server becomes unavailable. From which node in the Exchange Management Console should you perform this configuration? To answer, select the appropriate node in the answer area.



**Answer:**



**Explanation:**

<http://technet.microsoft.com/en-us/library/bb125240>

<http://technet.microsoft.com/en-us/library/bb123762>

**QUESTION 6**

Your company has a Microsoft Exchange Server 2010 Service Pack 1 (SP1) organization and a hybrid deployment of office 365. All mailboxes are hosted on Office 365. All user accounts are hosted on-premises. You need to delete a user account and its associated mailbox. Which tool should you use?

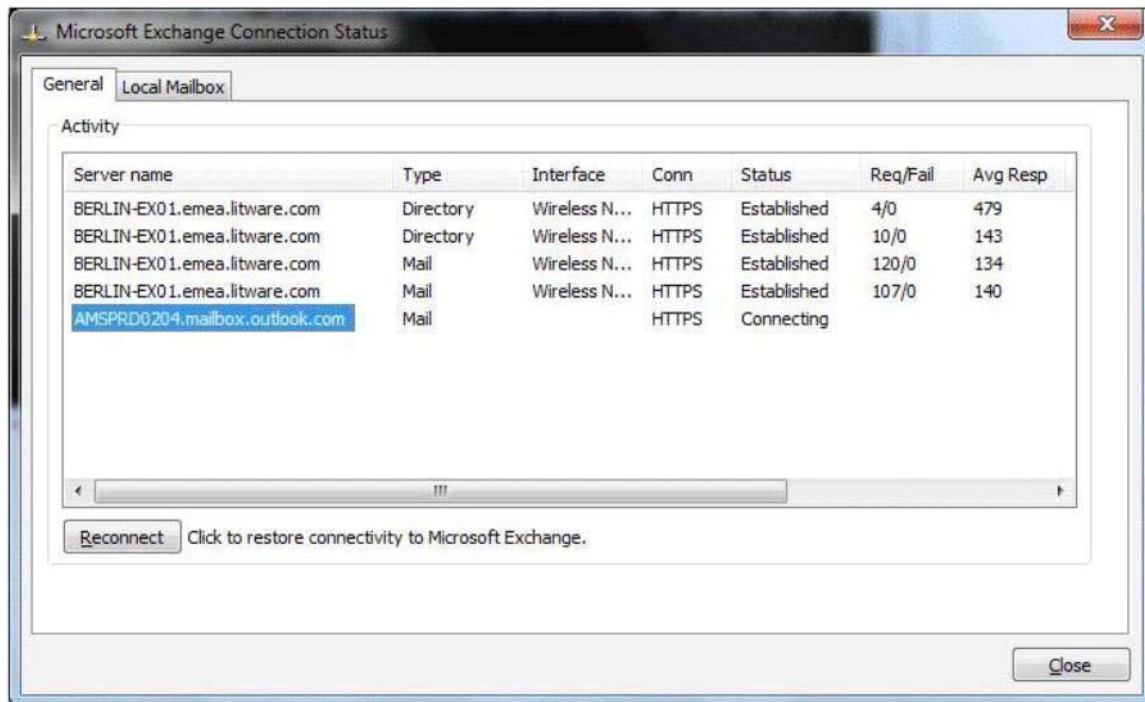
- A. the Exchange Control Panel
- B. the Set-Mailbox cmdlet
- C. the Remove-MailUser cmdlet
- D. Active Directory Users and Computers

**Answer: D**

**QUESTION 7**

Your company has a hybrid deployment of Office 365. Each user has a client computer that runs Windows 7 and has Office 2010 Service Pack 1 (SP1) installed. You have a user named User1 who has a Microsoft Exchange Server 2010 on-premises mailbox. You move the archive mailbox of User1 to Microsoft Exchange Online. After the move, User1 cannot access the archive mailbox

from Outlook 2010. User1 can log on to the Office 365 portal by using Internet Explorer. You verify the Microsoft Exchange Connection Status as shown in the exhibit. (Click the Exhibit button.)



You need to ensure that User1 can access the archive mailbox from Outlook 2010. What should you do?

- A. Add outlook.com to the Trusted sites in Internet Explorer.
- B. Install the Microsoft Online Services Sign-in Assistant.
- C. Run the Microsoft Office 365 Desktop Setup.
- D. Modify the Internet Explorer proxy settings.

**Answer: C**

#### QUESTION 8

Your company subscribes to an Office 365 Plan E3. A user named User1 installs Office Professional Plus for Office 365 on a client computer. From the Microsoft Online Services portal, you assign User1 an Office Professional Plus license. One month after installing Office, User1 can no longer save and edit Office documents on the client computer. User1 can open and view Office documents. You need to ensure that User1 can save and edit documents on the client computer by using office. What should you do?

- A. Install the Office Customization Tool.
- B. Reinstall Office Professional Plus.
- C. Install the Microsoft Online Services Sign-in Assistant.
- D. Upgrade the subscription to Plan E4.

**Answer: C**

### QUESTION 9

Your company has an Office 365 subscription that uses single sign-on. You have a server named Server1 that has the Active Directory Federation Services (AD FS) 2.0 server role installed. Server 1 fails. You install the AD FS 2.0 server role on a new server named Server1. You need to ensure that users can log on to Office 365 by using single sign-on. What should you do? To answer, move the appropriate actions from the list of actions to the answer area and mangle them in the correct order.

Actions	Answer Area
Update the external DNS zone.	
Install a server certificate on Server1.	
Run the AD FS 2.0 Federation Server Configuration Wizard.	
From the Microsoft Online Services Administration Center, run the Troubleshoot domain wizard.	
From the Microsoft Online Services Module for Windows PowerShell, update the contoso.com domain.	
From the Microsoft Online Services Module for Windows PowerShell, add a new domain for federation.	

**Answer:**

Actions	Answer Area
Update the external DNS zone.	Install a server certificate on Server1.
	Run the AD FS 2.0 Federation Server Configuration Wizard.
From the Microsoft Online Services Administration Center, run the Troubleshoot domain wizard.	From the Microsoft Online Services Module for Windows PowerShell, update the contoso.com domain.
From the Microsoft Online Services Module for Windows PowerShell, add a new domain for federation.	

### QUESTION 10

Your company has a hybrid deployment of Office 365. You need to identify which certificate is used for token signing between the on-premises environment and Office 365. Which tool should you use?

- A. the Exchange Management Console
- B. the AD FS 2.0 Management console
- C. the Active Directory Domains and Trusts snap-in
- D. the Office 365 portal
- E. the Certificates snap-in

**Answer: B**



## Thank You for Trying Our Product

### Lead2pass Certification Exam Features:

- ★ More than **99,900** Satisfied Customers Worldwide.
- ★ Average **99.9%** Success Rate.
- ★ **Free Update** to match latest and real exam scenarios.
- ★ **Instant Download** Access! No Setup required.
- ★ Questions & Answers are downloadable in **PDF** format and **VCE** test engine format.
- ★ Multi-Platform capabilities - **Windows, Laptop, Mac, Android, iPhone, iPod, iPad**.
- ★ **100%** Guaranteed Success or **100%** Money Back Guarantee.
- ★ **Fast**, helpful support **24x7**.



View list of all certification exams: <http://www.lead2pass.com/all-products.html>



Microsoft



ORACLE



CITRIX



JUNIPER  
NETWORKS



EMC²  
where information lives®

**10% Discount Coupon Code: ASTR14**