



Vendor: FileMaker

Exam Code: FM0-306

Exam Name: Developer Essentials for FileMaker 12

Version: DEMO

QUESTION 1

Drag and drop question

Match the FileMaker Server 12 hosting technology with the maximum number of concurrent client connections.

50	100	200	250	Unlimited
----	-----	-----	-----	-----------

place here	IWP
place here	ODBC/JDBC
place here	Custom Web Publishing

Answer:

200	IWP
Unlimited	ODBC/JDBC
100	Custom Web Publishing

QUESTION 2

Drag and drop question

Identify the default ports used in FileMaker Server 12 (choices may be used more than once).

80	443	521	5003	8080	16000	16001	50003
----	-----	-----	------	------	-------	-------	-------

place here	Web access (HTTP)
place here	Admin Console access
place here	FileMaker Pro 12 client access
place here	Remote Container encrypted video streaming

Answer:

80		521	5003	8080
443	Web access (HTTP)			
16000	Admin Console access			
16001	FileMaker Pro 12 client access			
50003	Remote Container encrypted video streaming			

QUESTION 3

What will a recursive custom function do when a stack limit is exceeded?

- A. returns !
- B. returns ?
- C. returns Error 1203: Unexpected end of calculation
- D. produces a spinning beach ball (Mac OS X) or a rotating cursor (Windows)

Answer: C

QUESTION 4

What is the maximum number of recursive calls that can be made utilizing a custom function in FileMaker Pro 12 Advanced?

- A. 10, 000
- B. 32, 000
- C. 50, 000
- D. 64, 000

Answer: D

QUESTION 5

What is the maximum number of files that can be hosted on FileMaker Server 12 Advanced?

- A. 100
- B. 125
- C. 250
- D. 999

Answer: B

QUESTION 6

What is the theoretical maximum record count in a FileMaker Pro 12 file?

- A. 100 million records

- B. 4 billion records
- C. 8 trillion records
- D. 64 quadrillion records
- E. 128 quadrillion records

Answer: A

QUESTION 7

Drag and drop question

Identify the default ports used in FileMaker Server 12 (choices may be used more than once).

80	443	521	5003	8080	16000	16001	50003
----	-----	-----	------	------	-------	-------	-------

place here	Admin Console access
place here	Secure web access (HTTPS)
place here	FileMaker Go 12 client access
place here	Remote Container video streaming

Answer:

16000	Admin Console access
8080	Secure web access (HTTPS)
5003	FileMaker Go 12 client access
521	Remote Container video streaming

QUESTION 8

Which two statements are true about field indexing in FileMaker Pro 12? (Choose two.)

- A. Calculation fields cannot be indexed.
- B. Indexing improves the speed at which sorts are performed.
- C. To establish a relationship between two fields, both fields are required to be indexed.
- D. A field must be indexed in order for Auto-complete using previously entered values to function.
- E. Minimal indexing indicates that either the value index or the word index has been created, but not both

Answer: DE

QUESTION 9

Given two tables in FileMaker Pro 12 with the following fields and table occurrences:

Team Table

TeamID [Number, Serialized, Unique, Required]
PlayerID [Number]
Team_Name

Player Table

PlayerID [Number, Serialized, Unique, Required]
TeamID [Number]
Player_Name



What two methods can be used to add a portal to a layout based on the Players table, which shows only the names of the current player's teammates, but not the current player's name? (Choose two.)

- A. base the portal on the relationship
Players:: Team ID = Teammates:: Team ID
And use a portal filter based on the calculation Players:: PlayerID Self
- B. base the portal on the relationship
Players::TeamID = Teammates::TeamID
Set a sort order of PlayerID. Ascending on the relationship, and Configure the portal to have an Initial row value of 2.
- C. bases the portal on the multi-predicate relationship:
Players::TeamID = Teammates::TeamID
AND Players: PlayerID Teammates:: PlayerID
- D. base the portal on the relationship
Players:: TeamID = Teammates:: TeamID
And use a portal filter based on the calculation
Players:: PlayerID Teammates:: PlayerID

Answer: CD

QUESTION 10

Which statement is true about the Relationships Graph in FileMaker Pro 12?

- A. Table occurrences can represent tables from external JDBC data sources.

- B. A single Relationships Graph can include references to no more than 256 external files.
- C. A set of relationships between tables can be created as a loop if every table occurrence in the loop has a unique name.
- D. The Allow creation of records in this table via this relationship setting can be selected between two table occurrences if the relationship includes only equality (=, or) matches between fields.

Answer: D

QUESTION 11

Which statement is true given two FileMaker Pro 12 files, Vendors and Products, if a table from Products appears on the Vendors Relationships Graph?

- A. Scripts in Vendors can reference data from global variables defined in Products.
- B. Layouts from Products can be displayed in the same window as layouts from Vendors.
- C. Vendors can contain multiple valid external FileMaker Data Sources referencing Products.
- D. A table occurrence from Products is required on the Vendors Relationships Graph in order to call a script in Products from Vendors

Answer: C

QUESTION 12

Which two statements are true about container fields that are configured to Store container data externally in FileMaker Pro 12? (Choose two)

- A. Container data stored externally using Secure storage is encrypted.
- B. FileMaker Pro 12 can store a maximum of 64 million external files per database file.
- C. It is possible to customize the directory location where FileMaker Pro 12 will store external container data.
- D. Once a container field has been configured to store data internally, the data must be re-imported if the field is changed to store data externally.

Answer: AC

QUESTION 13

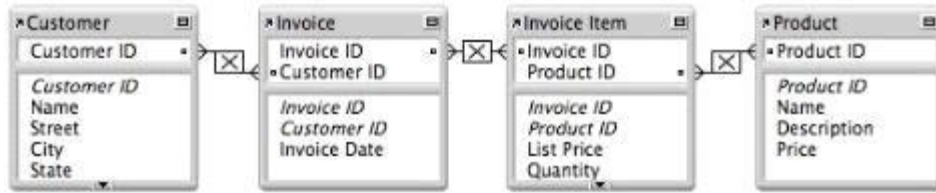
For which field type can the field validation setting Strict data type: Numeric Only be applied?

- A. Text
- B. Date
- C. Integer
- D. Summary
- E. Timestamp

Answer: A

QUESTION 14

Consider a FileMaker Pro 12 database with the following tables and fields:



Assuming only the above relationships between table occurrences, using sorting if necessary, which two actions can be performed? (Choose two.)

- A. Create a value list that shows all Invoices for a chosen Customer
- B. Create a value list on a Product layout which displays all Customers
- C. Find all of the Customers who have ever ordered a specific Product
- D. Create a portal to display each Product that has been ordered by a Customer
- E. Display all records from the Customer table in a portal on a layout for an Invoice Item record

Answer: BE

QUESTION 15

Which two statements are true about FileMaker Pro 12 relationships? (Choose two.)

- A. Valid relationships can include unindexed match fields.
- B. The % (contains) operator can be used for join criteria that include one unindexed match field.
- C. When editing match fields for a relationship, no more than 16 pairs of match fields can be used.
- D. A relationship defined with an X (cross product) will only include records with non-matching match field values.
- E. A relationship defined with an X (cross product) match will allow the Delete related records in this table when a record is deleted in the other table option.

Answer: AE

Thank You for Trying Our Product

Lead2pass Certification Exam Features:

- ★ More than **99,900** Satisfied Customers Worldwide.
- ★ Average **99.9%** Success Rate.
- ★ **Free Update** to match latest and real exam scenarios.
- ★ **Instant Download** Access! No Setup required.
- ★ Questions & Answers are downloadable in **PDF** format and **VCE** test engine format.
- ★ Multi-Platform capabilities - **Windows, Laptop, Mac, Android, iPhone, iPod, iPad**.
- ★ **100%** Guaranteed Success or **100%** Money Back Guarantee.
- ★ **Fast**, helpful support **24x7**.



View list of all certification exams: <http://www.lead2pass.com/all-products.html>



Microsoft



ORACLE



JUNIPER
NETWORKS



EMC²
where information lives®

10% Discount Coupon Code: ASTR14