



Vendor: EMC

Exam Code: E20-260

Exam Name: VPLEX Specialist Exam for Implementation
Engineers

Version: DEMO

QUESTION 1

What is true about VPLEX CLI?

- A. User can press the tab key to display all valid commands within the current context.
- B. "Storage-volume claim" command can be used in root context VPlexcli.
- C. Command syntax option d is short for default.
- D. Command "Connectivity validate-be" shows which ports can communicate with each other.

Answer: A

QUESTION 2

Which command can provide information on connections between storage volumes and back-end ports?

- A. Connectivity director
- B. Connectivity show
- C. Connectivity validate-be
- D. Export storage-view summary

Answer: A

QUESTION 3

What is the EMC best practice for the optimum number of active back-end storage paths per director for each LUN presented to VPLEX?

- A. 4 paths
- B. 2 paths
- C. 8 paths
- D. 16 paths

Answer: A

QUESTION 4

You are administering a VPLEX Metro configuration. When is it necessary to create a logging volume?

- A. Before creating a distributed device
- B. After creating a local device
- C. After creating a mobility job
- D. Before performing an NDU

Answer: A

QUESTION 5

When do you enable the front-end ports during VPLEX installation?

- A. After create meta-volumes and backup
- B. Before create meta-volumes and backup
- C. Before launch EZ-Setup wizard

D. After expose storage to hosts

Answer: A

QUESTION 6

During the installation of a VPLEX Local, the command `configuration system-setup` is issued. What is accomplished by this command?

- A. Launches EZ-setup Wizard
- B. Configures EMC system reports
- C. Exposes back-end storage to cluster
- D. Creates a logging volume

Answer: A

QUESTION 7

After registering Cluster-2 with ESRS during a VPLEX Metro cluster build, what is the next step to perform before the cluster is successfully built?

- A. Complete EZ-Setup Wizard on Cluster-1
- B. Complete EZ-Setup Wizard on Cluster-2
- C. Configure WAN connections on Cluster-1
- D. Configure WAN connections on Cluster-2

Answer: A

QUESTION 8

Which unique logical identifier is used when determining the relationship between a virtual volume and the back-end storage array?

- A. VPD ID
- B. WWPN
- C. LUN ID
- D. FCID

Answer: A

QUESTION 9

A customer has a VPLEX Metro installed. They asked you to recommend a method to non-disruptively move Virtual Volumes from a storage array at Cluster 1 to a storage array at Cluster 2. What would you recommend?

- A. Use the Device Mobility feature of VPLEX.
- B. Use the Extent Mobility feature of VPLEX.
- C. Change the RAID protection to RAID 0
- D. Use array-based features to copy the storage volume, then rediscover the array.

Answer: A

QUESTION 10

In a customer's VPLEX Metro environment, a host has been provisioned as a single virtual volume from cluster-1. The customer now needs to convert the local virtual volume to a distributed device.

How can the customer accomplish this?

- A. Add an unused device from cluster-2 as a remote mirror to the virtual volume on cluster-
- B. Add an unused virtual volume from cluster-2 as a remote mirror to the virtual volume on cluster-1
- C. Enable remote access to an unused virtual volume from cluster-2 and add it as a remote mirror.
- D. Enable remote access to an unused device from cluster-2 and add it as a remote mirror.

Answer: A

QUESTION 11

In a VPLEX Metro with Witness, which command checks the status and uptime of VPN, and returns the remote VPLEX management IP address and the witness public IP address?

- A. shell command `sudo /usr/sbin/ipsec statusall`
- B. `vplexcli` command `cluster status`
- C. shell command `/sbin/ifconfig`
- D. `vplexcli` command `VPLexadmin show`

Answer: A

QUESTION 12

You have added a new storage array to your environment, but VPLEX, does not see it. Which Vplexcli command will display the new storage array?

- A. `clusters/cluster-/storage-elements/storage-arrays/array re-discover`
- B. `/array claim -s`
- C. `/clusters/cluster-//storage-elements/storage-arrays>array used-by-array`
- D. `connectivity validate-be`

Answer: A

QUESTION 13

Do virtual volumes need to be taken off-line prior to upgrading VPLEX software, and why or why not?

- A. Yes, to preserve data integrity
- B. Yes, because the host-based multi-pathing software provides direct access during the upgrade
- C. No, because VPLEX software can be upgraded non-disruptively
- D. No, because the upgrading can be undone

Answer: C

QUESTION 14

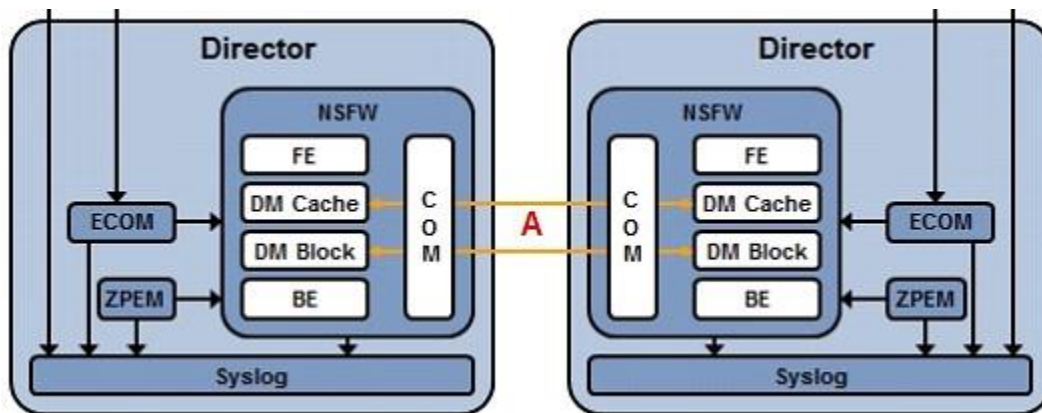
Which is a best practice recommended for VPLEX Metro inter-cluster WAN settings?

- A. Always use the defaults
- B. Allow auto-negotiation to select the optimal transmission rate
- C. Always set the MTU to 9000
- D. Tune the network parameters according to the specifics of the configuration

Answer: D

QUESTION 15

Refer to the Exhibit. Based on this diagram of a single VPLEX engine, which protocol is represented by "A"?

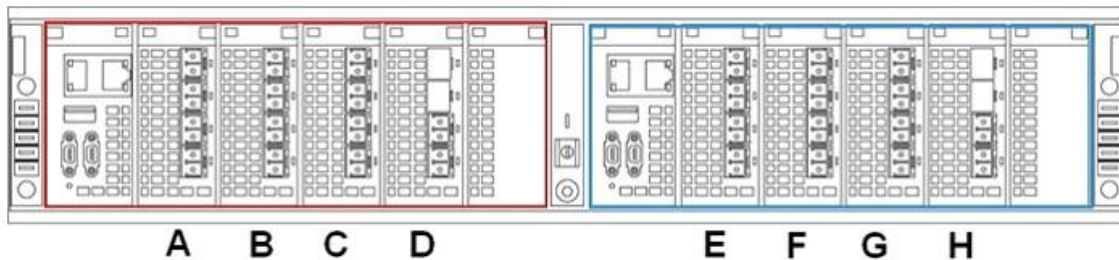


- A. FC
- B. IP
- C. ISCSI
- D. FCIP

Answer: A

QUESTION 16

Refer to the exhibit. What is the function of the Module in slot "A"?



- A. Front-end connectivity
- B. Back-end connectivity
- C. WAN-COM connectivity
- D. Local-COM connectivity

Answer: A

QUESTION 17

Refer to the exhibit. On which cluster is the GUI connected?

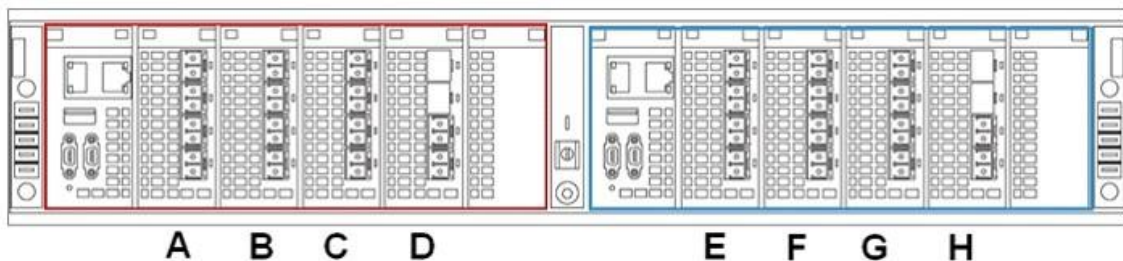


- A. Cluster-1
- B. Cluster-2
- C. Cluster IP alias
- D. VPLEXCLI must be used to determine which cluster is supporting the GUI

Answer: A

QUESTION 18

Refer to the exhibit. Which two modules are used for WAN-COM connectivity?



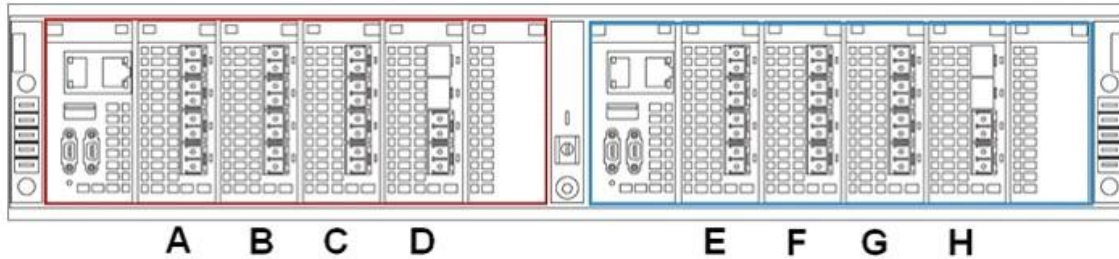
- A. C and G
- B. C and D
- C. D and E

D. G and H

Answer: A

QUESTION 19

Refer to the exhibit. For what is the module labeled "E" used?



- A. Director A Front-end Connectivity
- B. Director A Back-end Connectivity
- C. Director A WAN COM Connectivity
- D. Director A Local Com Connectivity

Answer: A

QUESTION 20

Refer to the exhibit. Which VPLEX configuration is shown?

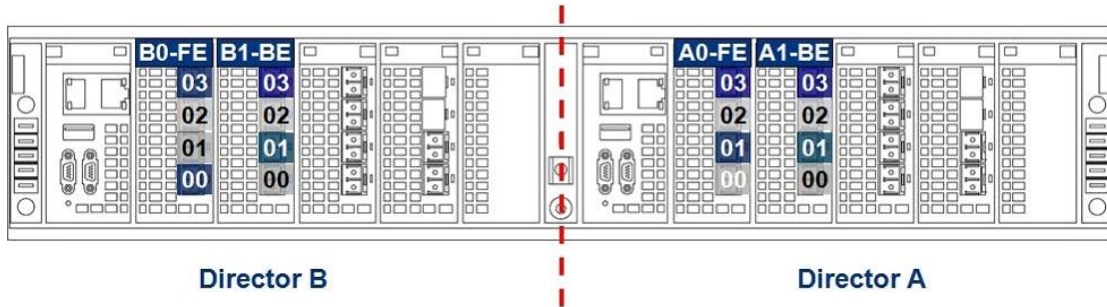
```
service@VPLEX_260:~> cat /var/log/VPlax/cli/connections
128.221.252.36:5988|128.221.253.36:5988,director-1-1-B
128.221.252.37:5988|128.221.253.37:5988,director-1-2-A
128.221.252.38:5988|128.221.253.38:5988,director-1-2-B
128.221.252.69:5988|128.221.253.69:5988,director-2-2-A
128.221.252.70:5988|128.221.253.70:5988,director-2-2-B
128.221.252.35:5988|128.221.253.35:5988,director-1-1-A
128.221.252.67:5988|128.221.253.67:5988,director-2-1-A
128.221.252.68:5988|128.221.253.68:5988,director-2-1-B
```

- A. VPLEX Metro/GEO dual engine
- B. VPLEX Local quad engine
- C. VPLEX Metro/GEO quad engine
- D. VPLEX Local dual engine

Answer: A

QUESTION 21

Refer to the exhibit. The customer has not followed EMC best practices when cabling their VS2 VPLEX engine. You are asked how to re-cable the engine to adhere to best practices. What is your response?



- A. Swap port 00 with port 01 of module A0-FE and B0-FE.
- B. Swap port 00 with port 01 of module A1-BE and B1-BE.
- C. Swap port 02 with port 03 of module A0-FE and B0-FE.
- D. Swap port 02 with port 03 of module A1-BE and B1-BE

Answer: A

QUESTION 22

Refer to the exhibit. Which two volumes should be used to complete the displayed command?

Name	Capacity	Vendor	IO	Type	Array Name
-----	-----	-----	Status	-----	-----
A) VPD83T3:60000970000195901057533030344344	80G	EMC	alive	traditional	EMC-SYMMETRIX-195901057
B) VPD83T3:60000970000195901057533030344345	80G	EMC	alive	traditional	EMC-SYMMETRIX-195901057
C) VPD83T3:60000970000195901057533030344346	80G	EMC	alive	traditional	EMC-SYMMETRIX-195901040
D) VPD83T3:60000970000195901057533030344430	10G	EMC	alive	traditional	EMC-SYMMETRIX-195901057
E) VPD83T3:60000970000195901057533030344431	10G	EMC	alive	traditional	EMC-SYMMETRIX-195901057
F) VPD83T3:60000970000195901057533030344346	10G	EMC	alive	traditional	EMC-SYMMETRIX-195901040

```
VPLEXcli:/> meta-volume create -n Pod9_meta -d
```

- A. B and C
- B. A and B
- C. D and F
- D. D and E

Answer: A

QUESTION 23

Refer to the exhibit. Which VPLEXcli command generated this output?


```
IPSEC is UP
Remote Management Server at IP Address 10.31.25.27 is
  reachable
Remote Internal Gateway addresses are reachable

Verifying the VPN status between the management server and
  the cluster witness server...
IPSEC is UP
Cluster Witness Server at IP Address 128.221.254.3 is
  reachable
```

- A. vpn status
- B. ndu pre-check
- C. health-check
- D. ifconfig -a eth3

Answer: A

QUESTION 24

Refer to the exhibit. You are preparing to perform an upgrade on an unconfigured VPLEX Metro. When you run the ndu pre-check command, it indicates that it has failed and there are no first upgraders. In your troubleshooting, you run the version -a command. Based on the output, what is the reason for the failure?

```
VPlexcli:/> ndu pre-check
warning:
During the NDU process, multiple directors will be offline for a
portion of the time. This is non-disruptive but is dependent on
a host-based multipathing solution being installed, configured,
and operating on all connected hosts.

warning:
Please run the "health-check --full" command to verify that the VPLEX hardware
is healthy.
Analyzing system configuration: .DONE
No first upgraders

=====
The output for 'ndu pre-check' has been captured in /var/log/vplex/cli/capture/ndu-pre-check-session.txt
ndu pre-check: Evaluation of <<ndu pre-check>> failed.
cause: Command execution failed.
cause: No first upgraders

VPlexcli:/> version -a
what      Version      Info
-----
Product Version      -      couldn't retrieve director software version(s)
SMSV2              D10.0.0.193.0  -
Mgmt Server Base    D4_MS8_7      -
Mgmt Server Software D10.0.0.218   -

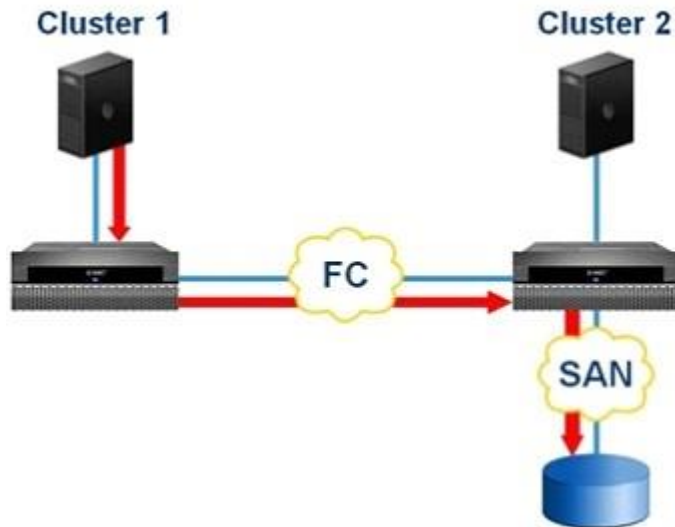
VPlexcli:/>
```

- A. Directors are not connected.
- B. health-check --full was not run
- C. Directors are at incompatible code levels
- D. ndu pre-check --force flag was not used

Answer: A

QUESTION 25

Refer to the exhibit. A customer needs to provision storage to a host on Cluster 1, but there is no additional local array capacity to allocate. How could the customer facilitate assigning storage to the Cluster 1 host from an array locally connected to Cluster 2?



- A. Enable remote access for a Cluster 2 virtual volume.
- B. Add a remote mirror to a Cluster 2 virtual volume.
- C. Create a distributed device from a virtual volume on Cluster 2
- D. Add a virtual volume from Cluster 2 to a distributed consistency group.

Answer: A

QUESTION 26

Refer to the exhibit. You have created a Distributed Device in a VPLEX Metro system. Which VPLEX Object can be placed in a Storage View for Cluster-1?

```

10.126.96.19 - PuTTY
VPLEXcli:/clusters/cluster-1/consistency-groups/DD_CG_2> ll

Attributes:
Name                               Value
-----
active-clusters                    []
cache-mode                        synchronous
detach-rule                       winner cluster-2 after 5s
operational-status                [(cluster-1,{ summary:: ok, details:: [] }), (cluster-2,{
summary:: ok, details:: [] })]
passive-clusters                  []
recoverpoint-enabled              false
storage-at-clusters               [cluster-1, cluster-2]
virtual-volumes                   [DD_8_3_vol, DD_8_4_vol]
visibility                        [cluster-1, cluster-2]

Contexts:
Name                               Description
-----
advanced                          -
recoverpoint                      -

VPLEXcli:/clusters/cluster-1/consistency-groups/DD_CG_2> drill-down -o DD_8_3_vol
virtual-volume: DD_8_3_vol (cluster-1)
  distributed-device: DD_8_3
    distributed-device-component: DD_7_3 (cluster-1)
      extent: extent_Symm0841_03A7_1
        storage-volume: Symm0841_03A7 (blocks: 0 - 1295999)
      distributed-device-component: DD_8_32012Nov26_183659 (cluster-2)
        extent: extent_VNX_LUN102_1
          storage-volume: VNX_LUN102 (blocks: 0 - 1295999)

VPLEXcli:/clusters/cluster-1/consistency-groups/DD_CG_2>

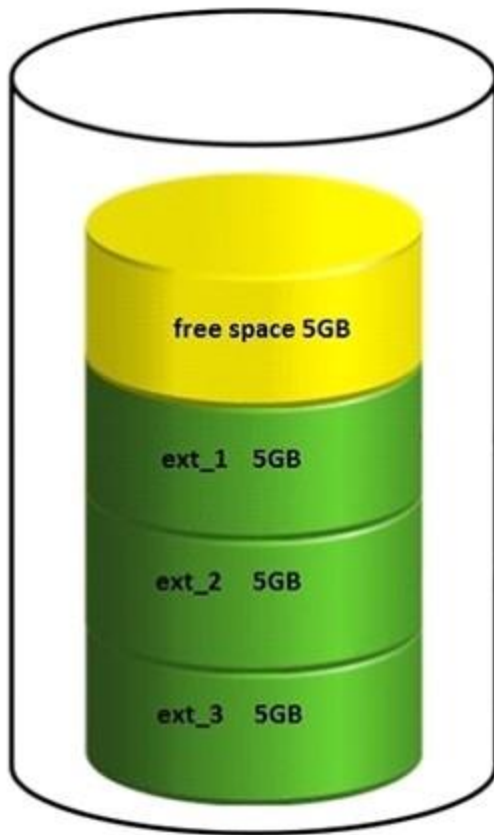
```

- A. DD_8_3_vol
- B. DD_8_32012Nov26_183659
- C. Symm0841_03A7
- D. extent_Symm0841_03A7_1

Answer: A

QUESTION 27

Refer to the exhibit. The customer deleted ext_2 on a 20 GB LUN in order to make an extent of 10 GB. Why is the customer unable to create a 10 GB extent?

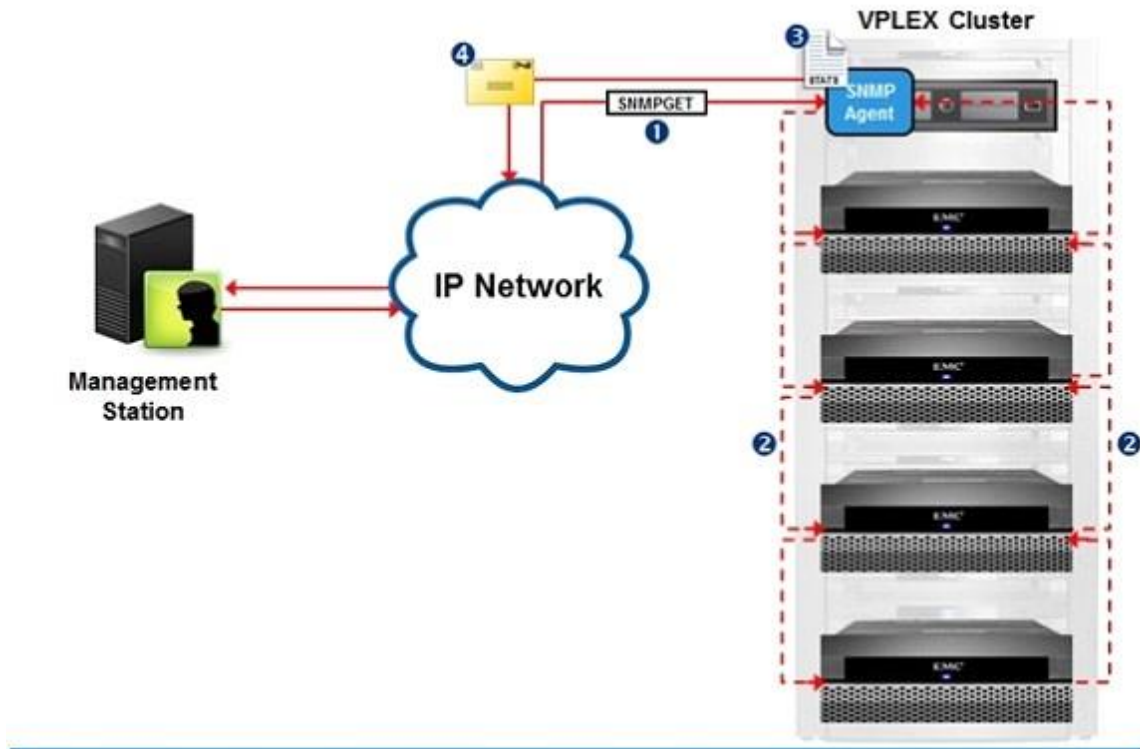


- A. Chunks of the storage need to be contiguous.
- B. Storage array must be re-discovered.
- C. ext_2 cannot be deleted.
- D. The defrag property is set to false.

Answer: A

QUESTION 28

Refer to the exhibit. Reference the message type shown at point "1". What type of response will be sent back to the SNMP management server from the SNMP Agent?



- A. A poll response containing requested data
- B. A trap response containing requested data
- C. A poll response that initiates a trap response
- D. A trap response containing all MIB data

Answer: A

QUESTION 29

Refer to the exhibit. During a short power disruption to cluster 2, director-2-1-A failed. Power was restored after 5 minutes. In examining the output of the vault status command, you note that cluster-2's status reads "Cluster is not vaulting/unvaulting". Why did this message appear?

```
Vplexcli:/clusters/cluster-2> vault status
=====
Cluster level summary
=====
Cluster:/clusters/cluster-2
Cluster is not vaulting/unvaulting
```

- A. The power disruption affected a single director only.
- B. There was no power disruption at cluster-1
- C. The power disruption did not affect all "A" directors.
- D. The vaulting process runs on cluster-1

Answer: A

QUESTION 30

Refer to the exhibit. After a power disruption of 20 seconds in a VPLEX environment, the output of the "vault status" command shows no vaulting processes. Why did this occur?

```
VPlexcli1:/clusters/cluster-1> vault status

=====
Cluster level summary
=====
Cluster:/clusters/cluster-1
Cluster is not vaulting/unvaulting

=====
Director level summary
=====
/engines/engine-1-1/directors/director-1-1-B:
    state: Vault Inactive
/engines/engine-1-1/directors/director-1-1-A:
    state: Vault Inactive
/engines/engine-1-2/directors/director-1-2-B:
    state: Vault Inactive
/engines/engine-1-2/directors/director-1-2-A:
    state: Vault Inactive
```

- A. The cache vaulting did not exceed the timer period.
- B. It is the expected output, because the command "vault status" doesn't show information on cache process at all.
- C. Cache vaulting process has already completed.
- D. Cache vaulting process is still running in background and it is not shown until completed.

Answer: A

Thank You for Trying Our Product

Lead2pass Certification Exam Features:

- ★ More than **99,900** Satisfied Customers Worldwide.
- ★ Average **99.9%** Success Rate.
- ★ **Free Update** to match latest and real exam scenarios.
- ★ **Instant Download** Access! No Setup required.
- ★ Questions & Answers are downloadable in **PDF** format and **VCE** test engine format.
- ★ Multi-Platform capabilities - **Windows, Laptop, Mac, Android, iPhone, iPod, iPad**.
- ★ **100%** Guaranteed Success or **100%** Money Back Guarantee.
- ★ **Fast**, helpful support **24x7**.



View list of all certification exams: <http://www.lead2pass.com/all-products.html>



10% Discount Coupon Code: ASTR14