



Vendor: Ericsson

Exam Code: ECP-102

Exam Name: Ericsson Certified Technology - IP

Version: DEMO

QUESTION 1

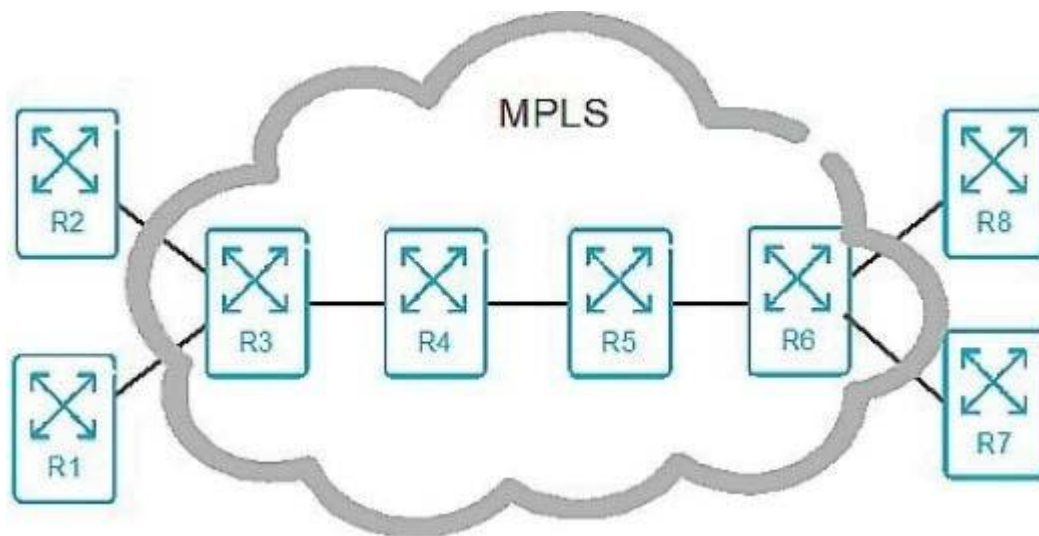
Which two statements are correct regarding QoS in an IP network using DiffServ? (Choose two.)

- A. High priority traffic can be dropped by any router in the network.
- B. Packets belonging to the same QoS class always traverse the same path regardless of IGP topology change.
- C. Routers reserve required bandwidth before they start forwarding packets for a given class.
- D. QoS procedures applied to a given traffic class are the same for all routers within the DiffServ domain.

Answer: AD

QUESTION 2

Click the Exhibit button. In the exhibit, which action is performed by router R4?



- A. pop
- B. swap
- C. PHP
- D. push

Answer: B

QUESTION 3

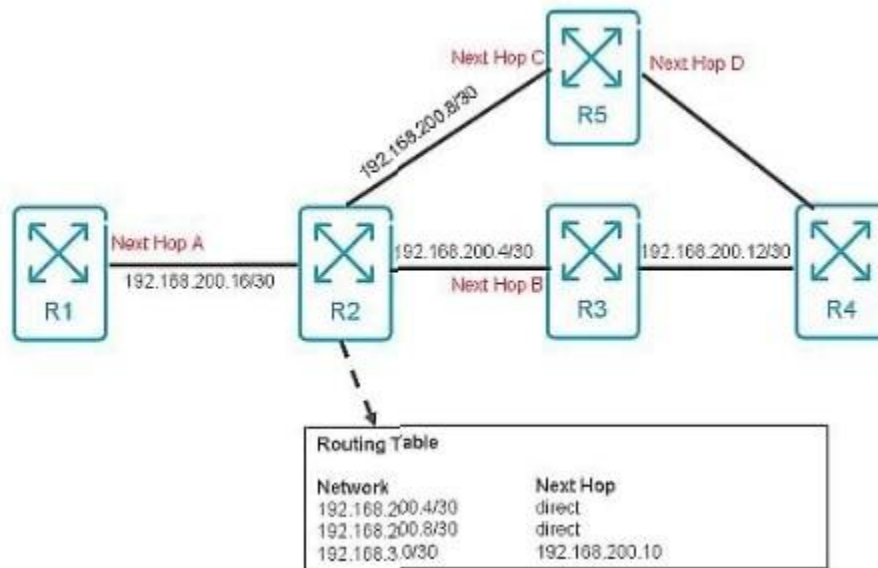
Computer A with IP address 192.168.1.1/24 wants to send a packet to computer B with IP address 192.168.2.1/24. Which statement is correct?

- A. Computer A will send an ARP request to computer B
- B. Computer A will encode the destination MAC address of computer B
- C. Computer A will use its default gateway.
- D. Computer A will send a network discovery request to computer B

Answer: C

QUESTION 4

Click the Exhibit button. Referring to the exhibit, what is the next hop (A, B, C, or D) for traffic arriving at R2 and destination network 192.168.3.0?



- A. Next Hop A
- B. Next Hop B
- C. Next Hop C
- D. Next Hop D

Answer: C

QUESTION 5

Why must the distance between two IP networks be less than 16 routers when using RIP as a routing protocol?

- A. RIP is a classful routing protocol.
- B. RIP converges too slowly.
- C. RIP uses a metric of 16 as infinite.
- D. RIP uses 16 seconds as a hold timer.

Answer: C

QUESTION 6

Which two statements are correct about link-state routing protocols? (Choose two.)

- A. Packets are routed based upon the shortest path to the destination.
- B. Paths are chosen based upon the number of hops to the destination.
- C. The exchange of advertisement is triggered by a change in the network.
- D. In a multipoint network, all routers exchange routing tables directly with all the routers.

Answer: AC

QUESTION 7

An edge router forwards a mixture of VoIP and IPTV traffic over the same port. Which two QoS scheduling algorithms would you use to assure good VoIP call quality when the port is congested? (Choose two.)

- A. PQ
- B. WFQ
- C. PWFQ
- D. WRED

Answer: AC

QUESTION 8

Which three techniques allow for the co-existence of IPv4 and IPv6 networks?

- A. tunneling
- B. anycasting
- C. translation
- D. encoding
- E. dual-stacking

Answer: B

QUESTION 9

What does TCP use to set up a connection?

- A. Two-way handshake
- B. Sliding window
- C. Three-way handshake
- D. Four-way handshake

Answer: C

Thank You for Trying Our Product

Lead2pass Certification Exam Features:

- ★ More than **99,900** Satisfied Customers Worldwide.
- ★ Average **99.9%** Success Rate.
- ★ **Free Update** to match latest and real exam scenarios.
- ★ **Instant Download** Access! No Setup required.
- ★ Questions & Answers are downloadable in **PDF** format and **VCE** test engine format.
- ★ Multi-Platform capabilities - **Windows, Laptop, Mac, Android, iPhone, iPod, iPad**.
- ★ **100%** Guaranteed Success or **100%** Money Back Guarantee.
- ★ **Fast**, helpful support **24x7**.



View list of all certification exams: <http://www.lead2pass.com/all-products.html>



Microsoft



ORACLE



CITRIX



JUNIPER
NETWORKS



EMC²
where information lives[®]

10% Discount Coupon Code: ASTR14