



Vendor: Microsoft

Exam Code: MB6-704

Exam Name: Microsoft Dynamics AX 2012 R3 CU8
Development Introduction

Version: DEMO

QUESTION 1

You are developing logic that will use a query object to fetch data from a database. Which function should you use to validate that the elements of type query exist in the Application Object Tree (AOT)?

- A. Query Build Data Source
- B. Query
- C. QueryStr
- D. QueryRun

Answer: C

Explanation:

QueryStr retrieves a string that represents an existing query. This function is a compile-time function, which is a metadata assertion function. Compile-time functions take arguments that represent entities in the Application Object Tree (AOT) and validate these arguments at compile time. They have no effect at run time.

Incorrect:

Not D: The QueryRun class traverses tables in the database, fetches records that satisfy constraints that are given by the user, and helps to gather such constraints from user input.

QUESTION 2

You need to add a menu item to a list page. To which pane should you add the menu item?

- A. Preview
- B. Action
- C. Filter
- D. FactBox

Answer: B

Explanation:

An action pane and action pane strip is a collection of buttons that represent the tasks and operations associated with a Microsoft Dynamics AX form.

The action pane buttons access menu items that are defined in the AOT.

When you add a button to an action pane button group, the application object tree (AOT) enables you to select the following types of buttons:

Command button
Menu item button
Menu button
Button

QUESTION 3

You need to set the code permission of an action menu item. Which property should you use?

- A. Linked Permission Object
- B. Configuration Key
- C. Needed Access Level
- D. WebSecure Transaction

Answer: A

Explanation:

Create a Menu Item Linked to a Code Permission

You can create a menu item by following these steps:

1. Create the menu item TestMenuItem in the CodePermissionsProject project.
2. In the Properties window for the TestMenuItem menu item, set the properties to the values that are shown in the following table.

Property	Value
Label	Code Permissions Test
ObjectType	Class
Object	TestClass
LinkedPermissionType	CodePermission
LinkedPermissionObject	TestCodePermission

QUESTION 4

You have a menu item named menuItem1 that is used to launch a form named Form1 by using the rich client.

You need to ensure that users who are granted the Maintain customer addresses privilege can use menuItem1 to open Form1 in read mode.

What should you do?

- A. Set menuItem1 to run on the server.
Modify the Enabled property of the Maintain customer addresses privilege.
- B. Create an entry point for the Maintain customer addresses privilege.
Set the AccessLevel property of the entry point
- C. Create an entry point for the Maintain customer addresses privilege.
Add Form1 to the Maintain customer addresses privilege.
- D. Set menuItem1 to run on the server.
Add Form1 to the Maintain customer addresses privilege.

Answer: B

Explanation:

* The developer does the following:

Creates a form and a menu item for a form.

Creates a privilege and an entry point.

Creates a test role for the application user.

* (see 4d below)

Create a Privilege and an Entry Point

You can create a privilege and an entry point for MyMenuItem by following these steps:

1. Create a privilege that is named MyNewPrivilege.
2. Expand AOT > Security > Privileges > MyNewPrivilege.
3. Add an entry point that is named MyNewEntryPoint. You do this by right-clicking the Entry Points node, and then clicking New Entry Point.
4. In the Properties window for the new entry point, do the following:
 - E. Set the Name property to MyNewEntryPoint.
 - F. Make the ObjectType of the entry point be MenuItemDisplay. c. Make the ObjectName of the entry point be MyMenuItem.

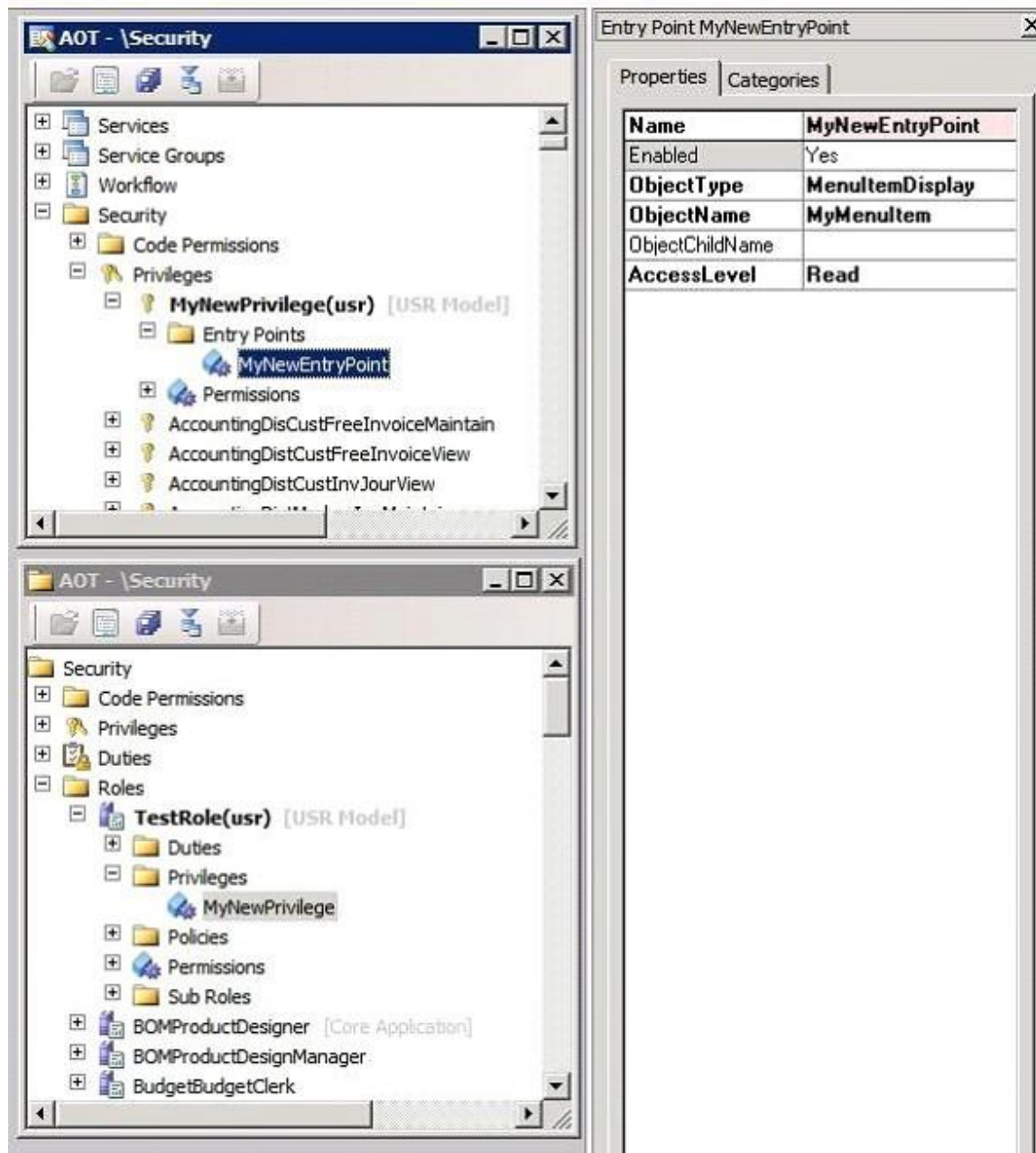
G. Set the AccessLevel of the entry point to Read.

* Example:

Create a Test Role

To properly test your form as an application user, you must create a test role. You can create a test role by following these steps:

1. Create a test role for an application user that is named TestRole.
2. Expand AOT > Security > Roles > TestRole > Privileges.
3. Add MyNewPrivilege privilege to the Privileges node of TestRole. The following figure shows a test role with a privilege that you create in this walkthrough.



QUESTION 5

You need to create a new extensible data security (XDS) policy.

What should you use?

- A. A map
- B. A part
- C. A query
- D. A job

Answer: C

Explanation:

There are two stages in creating the XDS policy:

Policy query

Security policy.

QUESTION 6

You need to assign the Accounts receivable manager role to a user.

From where should you assign the role to the user?

- A. Local Users and Groups on a client computer
- B. The Security node in the Application Object Tree (AOT)
- C. The Site Permissions page in the Dynamics AX Enterprise Portal
- D. The Users form from the System administration module

Answer: B

Explanation:

Microsoft Dynamics AX AOT allows the developer to manage role-based security. Under AOT > Security the developer manages permissions, privileges, duties, roles, and policies.

QUESTION 7

You have a table that contains invoices.

You need to create a FactBox that displays the number of invoices in the table.

Which type of FactBox should you use?

- A. form part
- B. cue group
- C. cue
- D. info part

Answer: D

Explanation:

* Info part:

part that shows a collection of data fields from a specified query. An info part uses metadata to describe how the data appears. As a result, you can use an info part in both the client and EP.

* FactBox type: Fields and values

Info part or form part

A FactBox that shows a list of field names and values. The value can include a link that opens the record in a form.

Incorrect:

Not A: Form Part

A part that represents a pointer to a form. You use a form part when you want a form to appear in the FactBox pane, enhanced preview, or preview pane.

Not B: cue group

A part that includes reference to one or more cues. You use a cue group to list a collection of

query results.

Typically, the list shows summary data that is related to a record or a task.

QUESTION 8

You need to set the permissions of an action menu item.

Which property should you modify?

- A. WebSecure Transaction
- B. Needed Access Level
- C. Configuration Key
- D. Linked Permission Type

Answer: D

Explanation:

Property: `LinkedPermissionType`

Specifies the type of the object pointed to by the `LinkedPermissionObject` property.

Property: `LinkedPermissionObject`

Specifies another object (for example, a form or report) whose permissions are to be applied to this menu item. Typically used with Action menu items.

Incorrect:

Not A: `WebSecureTransaction`

Select whether the menu item requires secure transactions (SSL). Web menu items only.

Not B: Property: `NeededAccessLevel`

Define the minimum access required if the menu item is to appear on a menu or a button. This property is used to set access to the menu items for different user groups.

Not C: Property: `ConfigurationKey`

Select which configuration key is required to enable the menu item. Use the key for the module that the object belongs to.

QUESTION 9

You need to set up the context for an extensible data security (XDS) policy.

Which security element should you use?

- A. Permission
- B. Duty
- C. Role
- D. Privilege

Answer: C

Explanation:

Concepts of the XDS model include:

Context:

A policy context controls the circumstances under which a given policy applies. The policy is not enforced unless the context is set.

The types of policy contexts are as follows:

* Role context can enable policies that are based on the roles to which the user is assigned.

* Application context can enable policies that are based on information which is set by the application.

QUESTION 10

You need to add a conditional statement into a query object.

Which class should you use?

- A. Query Item
- B. Query Build Data Source
- C. Query
- D. Query Range

Answer: C

Explanation:

In Microsoft Dynamics AX, you can create a query to retrieve data by using the query classes.

Note: The Query class enables you to create, read, update, and delete X++ code and metadata.

The Query class embodies the structure of a query. Objects of this type are not used for fetching records from the database. Instead, use a QueryRun object that may be assigned a query object.

The dynamic behavior of a query is defined by the.

The static behavior is defined by the Query class.

Queries contain one or more data sources that correspond to tables in the database.

The data sources are specified by using QueryBuildDataSource objects.

Incorrect

Not B: The QueryBuildDataSource class provides the building blocks that queries are made of.

Data sources are arranged in hierarchies that define the sequence in which records are fetched

from the tables that are assigned to the data sources. Each data source defines the order in

which the records are fetched, and also the criteria that must be met by the selected records.

This class lets you create, read, update, and delete X++ code and metadata. Not D: Query range

value expressions can be used in any query where you need to express a range that is more complex than is possible with the usual dot-dot notation (such as 5012..5500).

QUESTION 11

You are developing a class named Class1 that performs several calculations.

One of the methods in Class1 is named method1.

Other developers will create classes that inherit from Class1.

You need to ensure that method1 is available to Class1 and to all of the classes that inherit Class1.

The developers must not be able to call method1 from any other classes.

Which keyword should you use to define method1?

- A. Protected
- B. Public
- C. Server
- D. Private

Answer: D

Explanation:

Methods that are declared as private can be called only from methods in the class where the private method is declared.

Thank You for Trying Our Product

Lead2pass Certification Exam Features:

- ★ More than **99,900** Satisfied Customers Worldwide.
- ★ Average **99.9%** Success Rate.
- ★ **Free Update** to match latest and real exam scenarios.
- ★ **Instant Download** Access! No Setup required.
- ★ Questions & Answers are downloadable in **PDF** format and **VCE** test engine format.
- ★ Multi-Platform capabilities - **Windows, Laptop, Mac, Android, iPhone, iPod, iPad**.
- ★ **100%** Guaranteed Success or **100%** Money Back Guarantee.
- ★ **Fast**, helpful support **24x7**.



View list of all certification exams: <http://www.lead2pass.com/all-products.html>



Microsoft



ORACLE



CITRIX



JUNIPER
NETWORKS



EMC²
where information lives®

10% Discount Coupon Code: ASTR14