



**Vendor:** Microsoft

**Exam Code:** 70-692

**Exam Name:** Upgrading Your Windows XP Skills to MCSA  
Windows 8.1

**Version:** DEMO

### QUESTION 1

You are a system administrator for a local accounting firm.  
Your company uses Windows 8.1 Pro desktop computers.  
All computers have a secondary D: drive.  
You want to enable File History for all your users.  
You create the folder structure D:\Backup\File History on all user computers.  
You launch the File History application and verify that it is turned on.  
Next, you click Select drive in Configure File History Settings.  
However, under Copy Files to: you get the message, "No usable drives were found."  
You need to successfully configure file history.  
What should you do?

- A. Share the File History folder.
- B. Grant NTFS rights to the File History folder.
- C. Use a network drive for file history.
- D. Verify that your local drive has enough free space.

**Answer:** C

**Explanation:**

<http://windows.microsoft.com/en-us/windows-8/set-drive-file-history>

Set up a drive for File History

Before you start using File History to back up your files, you need to first select where your backups are saved.

You can select an externally connected drive, such as a USB drive, or you can save to a drive on a network. There are other choices, but these two provide the best options to help protect your files against a crash or other PC problems.

### QUESTION 2

A company has Windows 8.1 client computers.  
A user stores files in multiple locations.  
You need to determine which of the locations will be included in File History.  
Which three of the following file locations are included in File History? (Each correct answer presents part of the solution. Choose three.)

- A. Public Documents and Public Pictures
- B. Contacts, Desktop, and Favorites
- C. All system files
- D. C:\Users and C:\ProgramData
- E. My Documents and My Pictures
- F. Desktop and Recycle Bin

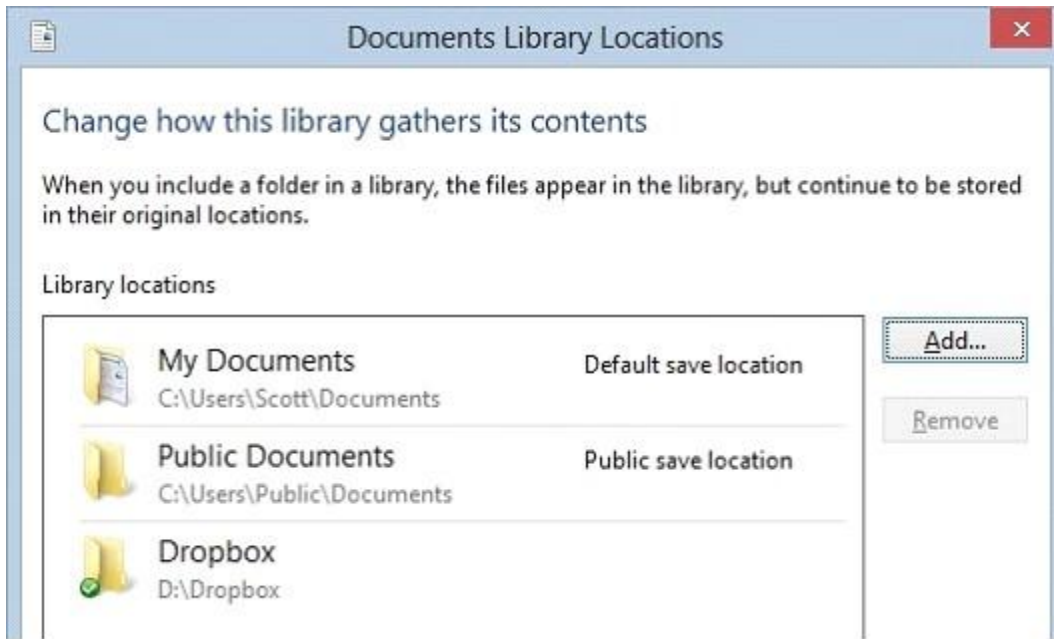
**Answer:** ABE

**Explanation:**

\* File History has a predefined set of items that it backs up automatically:

all your libraries (both default libraries and custom libraries you created), the Desktop, your Contacts, Internet Explorer favorites and the SkyDrive.

\* Library example:



<http://blogs.msdn.com/b/b8/archive/2012/07/10/protecting-user-files-with-file-history.aspx>

#### Protecting user files with File History

File History is a backup application that continuously protects your personal files stored in Libraries, Desktop, Favorites, and Contacts folders. It periodically (by default every hour) scans the file system for changes and copies changed files to another location. Every time any of your personal files has changed, its copy will be stored on a dedicated, external storage device selected by you. Over time, File History builds a complete history of changes made to any personal file.

It's a feature introduced in Windows 8 that offers a new way to protect files for consumers. It supersedes the existing Windows Backup and Restore features of Windows 7.

File History only saves copies of files that are in your libraries, contacts, favorites, and on your desktop. If you have folders elsewhere that you want backed up, you can add them to one of your existing libraries or create a new library.

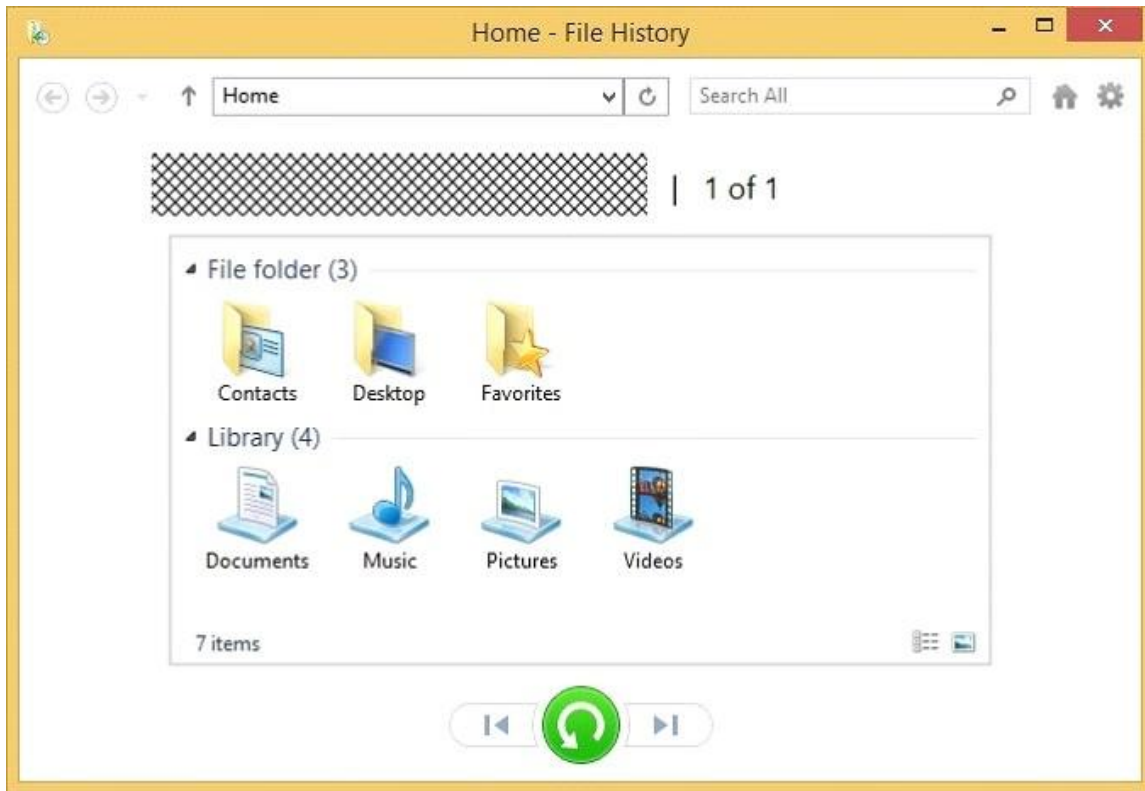
<http://www.dummies.com/how-to/content/back-up-your-computer-with-windows-8-file-history.html>

#### Back Up Your Computer with Windows 8 File History

File History backs up everything in your libraries: Documents, Music, Pictures, and Videos, as well as the Public folders. That's natural because that's where you store your files.

Further Information:

Default settings:



### QUESTION 3

You administer a group of 10 Windows 8.1 client computers. The client computers are members of a local workgroup. Employees log on to the client computers by using their Microsoft accounts.

- A. Save the recovery key to a file on the BitLocker-encrypted drive.
- B. Save the recovery key in the Credential Store.
- C. Save the recovery key to SkyDrive.
- D. Print the recovery key.

**Answer:** CD

#### **Explanation:**

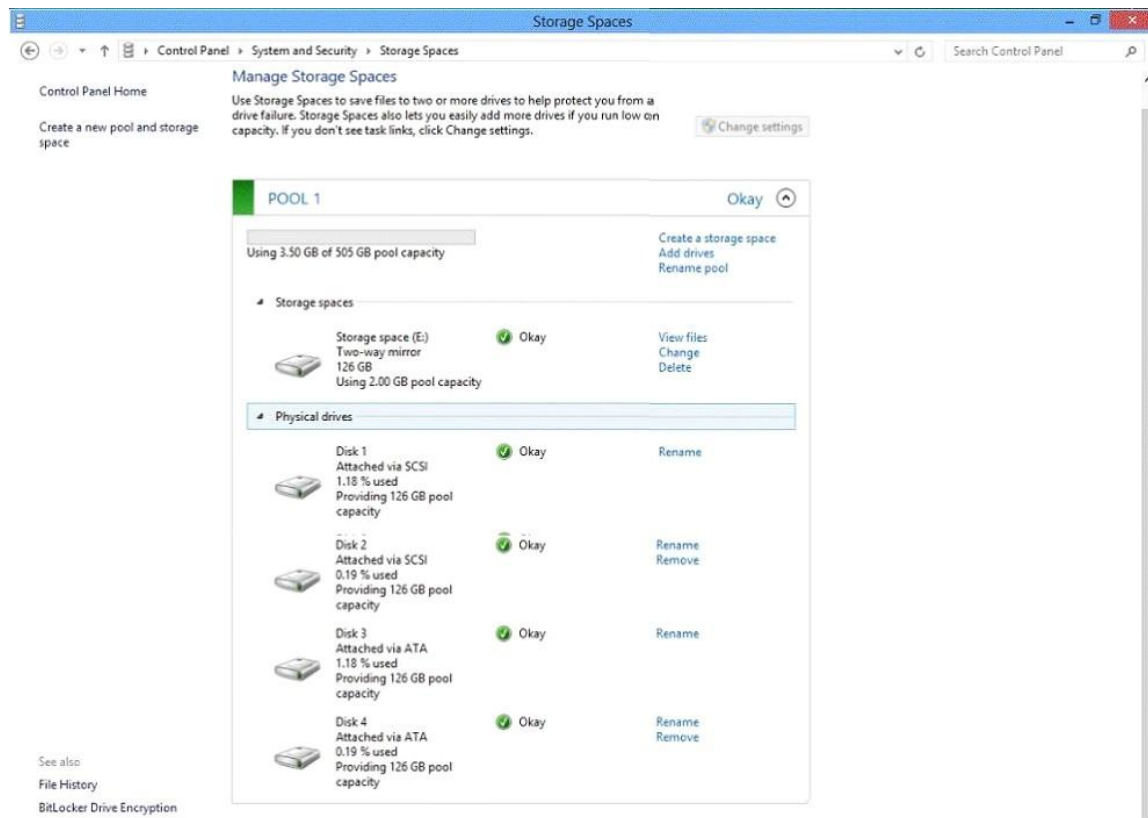
BitLocker in Windows 8 has added support to back up a BitLocker recovery key to Microsoft SkyDrive if the computer is NOT a member of a domain and the Windows Live ID user account is used to log on.

<http://windowsitpro.com/windows-8/q-i-heard-bitlocker-windows-8-can-save-recovery-keys-skydrive-so-why-dont-i-have-option>

### QUESTION 4

Hotspot Question

You have 10 Windows 8.1 Pro client computers. The Storage Spaces settings of the computers are configured as shown in the following exhibit. (Click the Exhibit button.)



To answer, complete each statement according to the information presented in the exhibit.  
Each correct selection is worth one point.

...are used in the Storage space (E:) two-way mirror

  
 All disks  
 Disk 1 and Disk 3  
 Disk 2 and Disk 4

The current capacity of the Storage space (E:) is ...

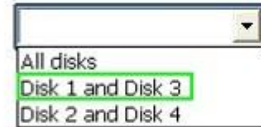
  
 126 GB  
 252 GB  
 504 GB  
 505 GB

In order to modify the resiliency type of Storage space (E:), you need to ...

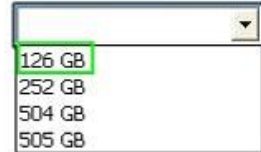
  
 select Add drives.  
 select Change.  
 select Delete.

**Answer:**

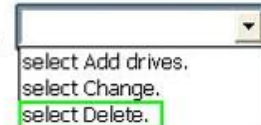
...are used in the Storage space (E:) two-way mirror



The current capacity of the Storage space (E:) is ...



In order to modify the resiliency type of Storage space (E:), you need to ...



### QUESTION 5

You are a systems administrator for your company. The company has employees who work remotely by using a virtual private network (VPN) connection from their computers, which run Windows 8 Pro. These employees use an application to access the company intranet database servers. The company recently decided to distribute the latest version of the application through using a public cloud.

Some users report that every time they try to download the application by using Internet Explorer, they receive a warning message that indicates the application could harm their computer.

You need to recommend a solution that prevents this warning message from appearing, without compromising the security protection of the computers.

What should you do?

- A. Publish the application through a public file transfer protocol (FTP) site.
- B. Publish the application through an intranet web site.
- C. Instruct employees to disable the SmartScreen Filter from within the Internet Explorer settings.
- D. Publish the application to Windows Store.

**Answer: B**

**Explanation:** Intranet is the generic term for a collection of private computer networks within an organization. An intranet uses network technologies as a tool to facilitate communication between people or work groups to improve the data sharing capability and overall knowledge base of an organization's employees.

Intranets utilize standard network hardware and software technologies like Ethernet, Wi-Fi, TCP/IP, Web browsers and Web servers. An organization's intranet typically includes Internet access but is firewalled so that its computers cannot be reached directly from the outside.

[http://compnetworking.about.com/cs/intranets/g/bldef\\_intranet.htm](http://compnetworking.about.com/cs/intranets/g/bldef_intranet.htm)

<http://www.dynamicwebs.com.au/tutorials/ftp.htm>

<http://msdn.microsoft.com/en-us/library/windows/apps/xaml/hh974576.aspx>

### QUESTION 6

You plan to purchase new Windows 8.1 tablets for your company network.

You need to ensure that tablet users are able to use the Windows 8.1 Snap feature.

Which hardware specifications should you meet in choosing tablets?

- A. Monitor that supports at least five simultaneous touches
- B. Monitor and video adapter that support a minimum screen resolution of 1024 x 768
- C. Monitor and video adapter that support a minimum screen resolution of 1366 x 768
- D. Monitor that supports at least three simultaneous touches

**Answer: D**

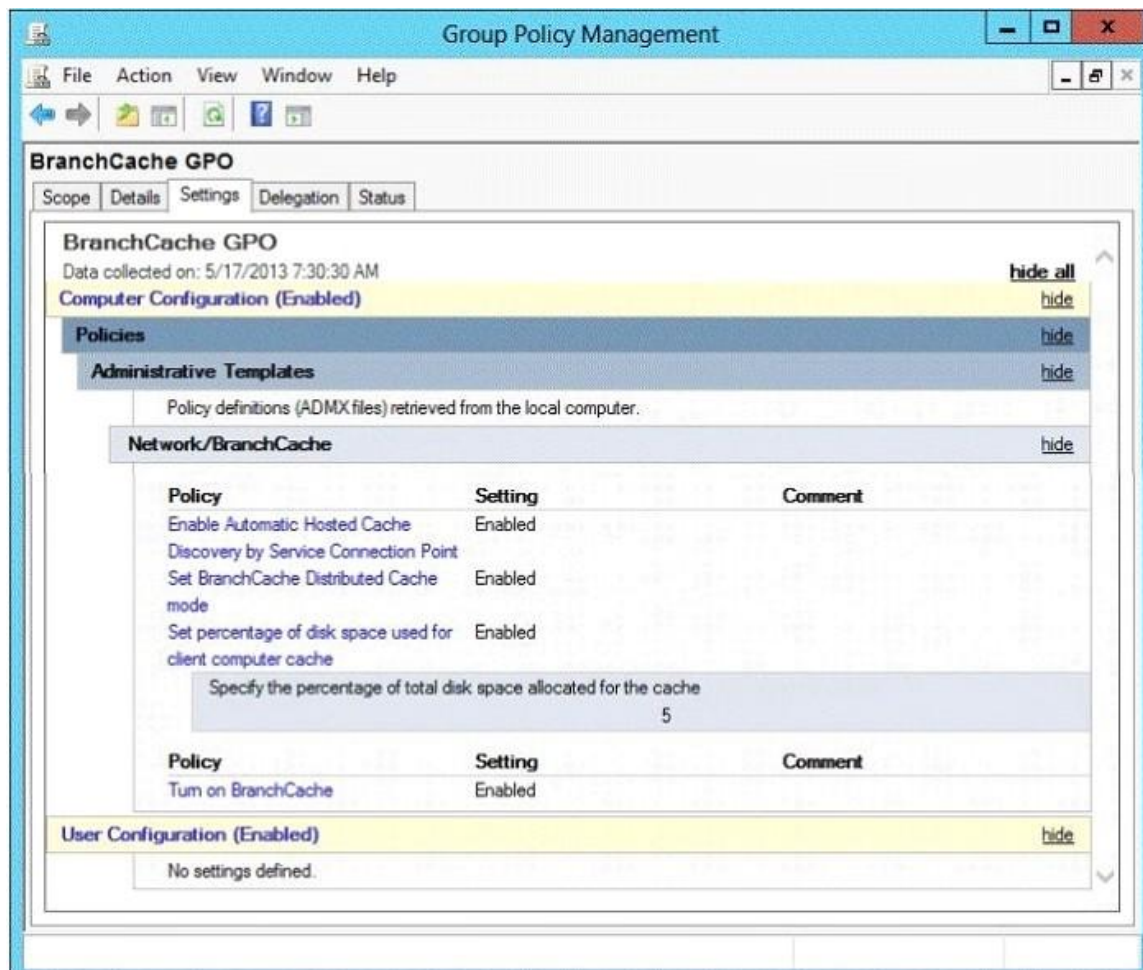
## QUESTION 7

Hotspot Question

Your company has a main office and two branch offices named Branch1 and Branch2. The main office contains a file server named Server1 that has BranchCache enabled. Branch1 contains a server named Server2 that is configured as a hosted cache server.

All client computers run Windows 8.1 Enterprise. All of the computers are joined to an Active Directory domain.

The BranchCache settings of all the computers are configured as shown in the following exhibit. (Click the Exhibit button.)



In the table below, identify the effective setting for the client computers in each branch office. Make one selection in each column. Each correct selection is worth one point.

Effective setting	Branch1 Computers	Branch2 Computers
Will not use BranchCache.	<input type="radio"/>	<input type="radio"/>
Will retrieve cached content from peers.	<input type="radio"/>	<input type="radio"/>
Will retrieve cached content from Server1.	<input type="radio"/>	<input type="radio"/>
Will retrieve cached content from Server2.	<input type="radio"/>	<input type="radio"/>

**Answer:**

Effective setting	Branch1 Computers	Branch2 Computers
Will not use BranchCache.	<input type="radio"/>	<input checked="" type="radio"/>
Will retrieve cached content from peers.	<input type="radio"/>	<input checked="" type="radio"/>
Will retrieve cached content from Server1.	<input type="radio"/>	<input checked="" type="radio"/>
Will retrieve cached content from Server2.	<input checked="" type="radio"/>	<input type="radio"/>

### QUESTION 8

Your company has a main office and a branch office.  
Each office contains several servers that run Windows Server 2012.  
You need to configure BranchCache for the client computers in the branch office.  
The solution must ensure that all of the cached content is in a central location.  
What should you run on each client computer?

- A. The Enable-BCHostedServer cmdlet
- B. The Enable-BCLocal cmdlet
- C. The Enable-BCDistributed cmdlet
- D. The Enable-BCHostedClient cmdlet

**Answer: C**

### QUESTION 9

You administer Windows 8.1 Enterprise computers in your company network.  
You provide remote employees with a Windows To Go workspace.  
A remote employee informs you that his workspace requires activation.  
You need to activate the workspace.  
What should you do?

- A. Instruct the employee to run Windows Update from the workspace.

- B. Instruct the employee to connect to the company network from the workspace by using VPN.
- C. Instruct the employee to run the slmgr /upk command from the workspace.
- D. Give the employee a Multiple Activation Key (MAK).

**Answer: B**

**Explanation:**

[http://technet.microsoft.com/en-us/library/jj592680.aspx#wtg\\_faq\\_roamact](http://technet.microsoft.com/en-us/library/jj592680.aspx#wtg_faq_roamact)

Windows To Go: Frequently Asked Questions

Do I need to activate Windows To Go every time I roam?

No, Windows To Go requires volume activation; either using the Key Management Service (KMS) server in your organization or using Active Directory based volume activation. The Windows To Go workspace will not need to be reactivated every time you roam. KMS activates Windows on a local network, eliminating the need for individual computers to connect to Microsoft. To remain activated, KMS client computers must renew their activation by connecting to the KMS host on periodic basis. This typically occurs as soon as the user has access to the corporate network (either through a direct connection on-premises or a through remote connection using DirectAccess or a virtual private network connection), once activated the machine will not need to be activated again until the activation validity interval has passed. In a KMS configuration the activation validity interval is 180 days.

<http://technet.microsoft.com/en-us/library/dn502540.aspx> Slmgr.vbs Options for Volume Activation

Table 2. Slmgr.vbs command-line options

/upk [ActivationID]

This option uninstalls the product key of the current Windows edition.

After a restart, the system will be in an Unlicensed state unless a new product key is installed.

Optionally, you can use the [Activation ID] parameter to specify a different installed product. This operation must be run from an elevated command prompt.

#### QUESTION 10

A company has Windows 8.1 client computers.

Finance department employees store files in the C:\Finance directory. File History is on.

A Finance department employee attempts to restore a file to a previous version by using File History. The file is not available to restore.

You need to establish why the file history is not available and ensure that it is available in the future.

Which two actions should you perform? (Each correct answer presents part of the solution. Choose two.)

- A. Set the Protection Settings for drive C to On.
- B. Review the File History backup log.
- C. Restore the data files from the Previous Versions tab located in the folder properties.
- D. Move the file into a library.

**Answer: BD**

## Thank You for Trying Our Product

### Lead2pass Certification Exam Features:

- ★ More than **99,900** Satisfied Customers Worldwide.
- ★ Average **99.9%** Success Rate.
- ★ **Free Update** to match latest and real exam scenarios.
- ★ **Instant Download** Access! No Setup required.
- ★ Questions & Answers are downloadable in **PDF** format and **VCE** test engine format.
- ★ Multi-Platform capabilities - **Windows, Laptop, Mac, Android, iPhone, iPod, iPad**.
- ★ **100%** Guaranteed Success or **100%** Money Back Guarantee.
- ★ **Fast**, helpful support **24x7**.



View list of all certification exams: <http://www.lead2pass.com/all-products.html>



Microsoft



ORACLE



CITRIX



JUNIPER  
NETWORKS



EMC<sup>2</sup>  
where information lives<sup>®</sup>

**10% Discount Coupon Code: ASTR14**