



**Vendor:** Microsoft

**Exam Code:** 70-333

**Exam Name:** Deploying Enterprise Voice with Skype for Business 2015

**Version:** DEMO

**Case Study 1 - Contoso, Ltd**

**Case Study 2 - Litware, inc**

**Case Study 3 - Humongous Insurance**

**Case Study 4 - Trey Research**

**Case Study 5 - Tailspin toys**

**Case Study 6 - Contoso, LTD 2**

**General Overview**

Contoso, Ltd., is a manufacturing company that has 4,000 employees.

The company has a sales department, a marketing department, a research department, and a human resources department.

**Physical Locations**

The company has four offices.

The offices are configured as shown in the following table.

| Office location | Number of users | Extension prefix | Client subnet   |
|-----------------|-----------------|------------------|-----------------|
| New York        | 1,500           | 1                | 192.168.8.0/21  |
| Miami           | 100             | 2                | 192.168.20.0/24 |
| Los Angeles     | 400             | 3                | 192.168.30.0/23 |
| Houston         | 200             | 4                | 192.168.40.0/24 |

The New York office contains the main data center. Communications for all of the offices is routed through the New York office.

All telephone calls from the Los Angeles office and the Miami office are routed through a public switched telephone network (PSTN) gateway in the New York office.

All offices connect to each other by using a wide area network (WAN) link. Each office connects directly to the Internet.

**QUESTION 1**

You have a Microsoft Exchange Server 2013 organization and a Skype for Business Server 2015 infrastructure.

You need to design a Unified Messaging (UM) solution to meet the following requirements:

- Support a peak concurrency of 500 calls.
- Connect to two Skype for Business Server 2015 pools.

What is the minimum number of mailbox servers that are required?

- A. 1
- B. 2
- C. 3
- D. 5

**Answer: C**

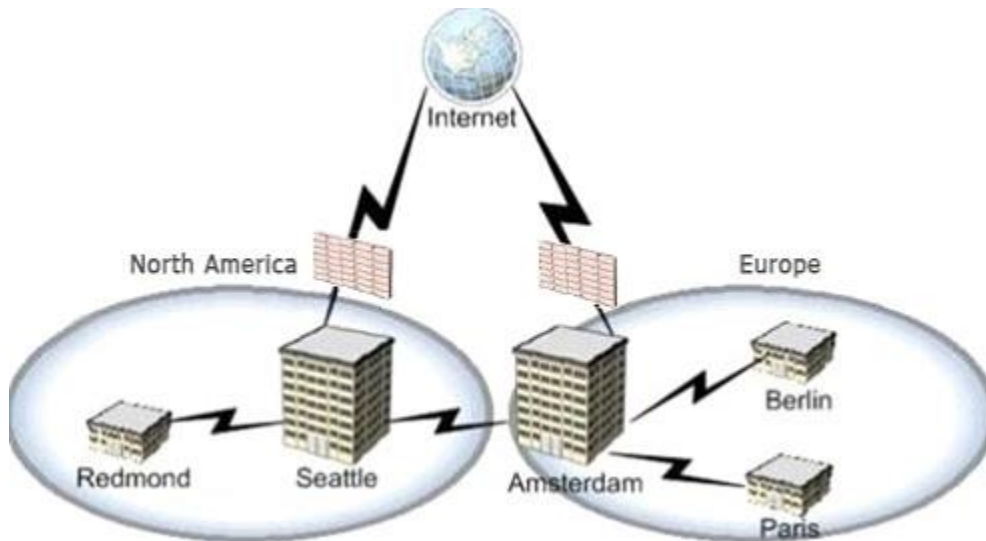
**Explanation:**

<http://technet.microsoft.com/en-us/library/aa997637>

**QUESTION 2**

Drag and Drop Question

Contoso, Ltd., has five offices. The offices are configured as shown in the exhibit. Click the Exhibit button.



Each office has a local connection to the public switched telephone network (PSTN). The peak usage statistics are shown in the following table:

| Office    | Number of calls | Percentage of calls to North America | Percentage of calls to Europe |
|-----------|-----------------|--------------------------------------|-------------------------------|
| Redmond   | 10              | 50 percent                           | 50 percent                    |
| Seattle   | 100             | 80 percent                           | 20 percent                    |
| Amsterdam | 50              | 20 percent                           | 80 percent                    |
| Berlin    | 20              | 0 percent                            | 100 percent                   |
| Paris     | 20              | 50 percent                           | 50 percent                    |

Every audio call consumes 100 kilobits per second (Kbps).

You plan to replace the PSTN connection with a centralized SIP trunking service.

The service will contain a Sip trunk in the Seattle office and a SIP trunk in the Amsterdam office.

The solution must use least cost routing.

You need to calculate the maximum amount of bandwidth that will be used by each SIP trunk.

What is the maximum amount of bandwidth that will be used by each SIP trunk? To answer, drag the appropriate bandwidth amount to the correct SIP trunk in the answer area. Each bandwidth amount may be used once, more than once, or not at all. Additionally, you may need to drag the split bar between panes or scroll to view content.

| Bandwidth   | Answer Area                    |
|-------------|--------------------------------|
| 8,500 Kbps  | Amsterdam SIP trunk: Bandwidth |
| 9,500 Kbps  | Seattle SIP trunk: Bandwidth   |
| 10,000 Kbps |                                |
| 10,500 Kbps |                                |
| 12,500 Kbps |                                |

Answer:

| Bandwidth   | Answer Area                     |
|-------------|---------------------------------|
| 8,500 Kbps  | Amsterdam SIP trunk: 9,500 Kbps |
| 9,500 Kbps  | Seattle SIP trunk: 10,500 Kbps  |
| 10,000 Kbps |                                 |
| 10,500 Kbps |                                 |
| 12,500 Kbps |                                 |

### QUESTION 3

Drag and Drop Question

You have a Skype for Business Server 2015 infrastructure.

You have a Virtual Desktop Infrastructure (VDI) that uses Hyper-V.

You use VDI templates based on Windows 8.1. All thin clients run Windows 8.1. Each thin client has a Skype for Business-qualified headset.

You need to prepare all of the thin clients and all of the VDI templates so that users can place calls by using the headset.

Which components should you install on the thin clients and the VDI templates?

To answer, drag the appropriate components to the correct location in the answer area. Each component may be used once, more than once, or not at all. Additionally, you may need to drag the split bar between panes or scroll to view content.

| Components                       |               | Answer Area |
|----------------------------------|---------------|-------------|
| Skype for Business Phone Edition | Thin clients  | Component   |
| Skype for Business               |               | Component   |
| Lync VDI plug-in                 | VDI templates | Component   |
| Windows 8 RDS client             |               |             |

**Answer:**

| Answer Area   |  |
|---------------|--|
| Thin clients  | Windows 8 RDS client<br>Lync VDI plug-in |
| VDI templates | Skype for Business                       |

**Explanation:**

<https://itbasedtelco.wordpress.com/2013/06/17/lync-deployment-using-virtual-desktops-vdi/>  
[https://technet.microsoft.com/en-us/library/jj205304\(v=ocs.15\).aspx](https://technet.microsoft.com/en-us/library/jj205304(v=ocs.15).aspx)

**QUESTION 4**

You have a Skype for Business Server 2015 infrastructure.  
You configure the Skype for Business Server to require that each user has a location.  
You configure a location for each subnet.  
Users report that when they sign in, they are prompted for their location information.  
You need to prevent the users from being prompted for their location information when they sign in to Skype for Business on the internal network.  
Which Skype for Business Management Shell cmdlet should you run?

- A. Publish-CsLISConfiguration
- B. Publish-CsTopology
- C. Set-CsNetworkSubnet
- D. Export-CsLISconfiguration

**Answer: A**

**Explanation:**

<https://technet.microsoft.com/en-us/library/gg398364.aspx>

### QUESTION 5

You have a Skype for Business Server 2015 infrastructure. The infrastructure contains one central site. The infrastructure contains a Standard Edition server that has the Mediation Server role installed and is located in the central site.

You configure a trunk to an IP-PBX. The IP-PBX is qualified for integration with Skype for Business.

You have 300 users who are enabled for Enterprise Voice.

You need to provide public switched telephone network (PSTN) services to the Enterprise Voice users if the IPPBX fails.

Which two actions will achieve the goal? Each Answer: presents a complete solution.

- A. Install a Survivable Branch appliance that connects directly to the PSTN. Configure a new trunk and add the trunk to the existing route. Add the route to the PSTN usage and add the PSTN usage to the voice policy.
- B. Install an additional IP-PBX that connects directly to the PSTN. Configure the existing trunk to use both IP-PBXs in resiliency mode.
- C. Install a PSTN gateway that connects directly to the PSTN. Configure a new trunk to the new PSTN gateway. Create a new route and a new PSTN usage. Add the route to the PSTN usage and add the PSTN usage to the voice policy.
- D. Install a new trunk to a certified SIP trunk provider. Add the trunk to the existing PSTN usage. Add the PSTN usage to the voice policy.

**Answer: C**

**Explanation:**

<https://technet.microsoft.com/en-us/library/jj721915.aspx>

<http://www.gecko-studio.co.uk/sip-trunk-lync-sir/>

### QUESTION 6

You have a Skype for Business Server 2015 infrastructure that has Enterprise Voice enabled.

When a caller dials an unassigned number, the caller hears a custom message, and then the caller is forwarded to a user named User1.

Several months later, User1 leaves the company.

You need to ensure that when a caller dials an unassigned number, the caller hears the custom message and is forwarded to a user named User2.

Which Skype for Business Management Shell cmdlet should you run?

- A. Set-CsVoiceRoute
- B. Set-CsAnnouncement
- C. Set-CsUnassignedNumber
- D. Set-CsUser

**Answer: B**

**Explanation:**

<https://technet.microsoft.com/en-us/library/gg425752.aspx>

## Thank You for Trying Our Product

### Lead2pass Certification Exam Features:

- ★ More than **99,900** Satisfied Customers Worldwide.
- ★ Average **99.9%** Success Rate.
- ★ **Free Update** to match latest and real exam scenarios.
- ★ **Instant Download** Access! No Setup required.
- ★ Questions & Answers are downloadable in **PDF** format and **VCE** test engine format.
- ★ Multi-Platform capabilities - **Windows, Laptop, Mac, Android, iPhone, iPod, iPad.**
- ★ **100%** Guaranteed Success or **100%** Money Back Guarantee.
- ★ **Fast**, helpful support **24x7**.



View list of all certification exams: <http://www.lead2pass.com/all-products.html>



Microsoft



ORACLE



CITRIX



JUNIPER  
NETWORKS



EMC<sup>2</sup>  
where information lives®

**10% Discount Coupon Code: ASTR14**