



Vendor: Juniper

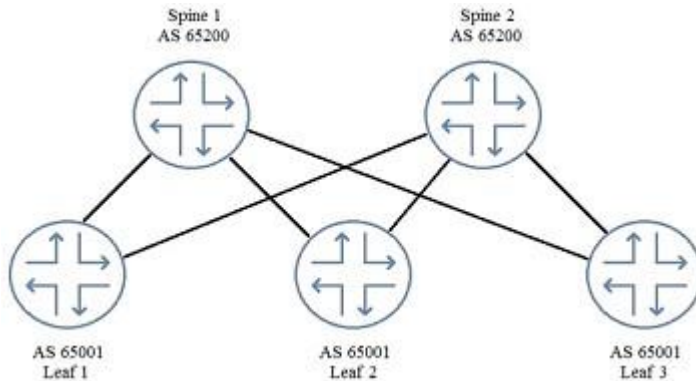
Exam Code: JN0-681

Exam Name: Data Center, Professional (JNCIP-DC)

Version: DEMO

QUESTION 1

Referring to the exhibit, not all routes are being exchanged by EBGP peers.



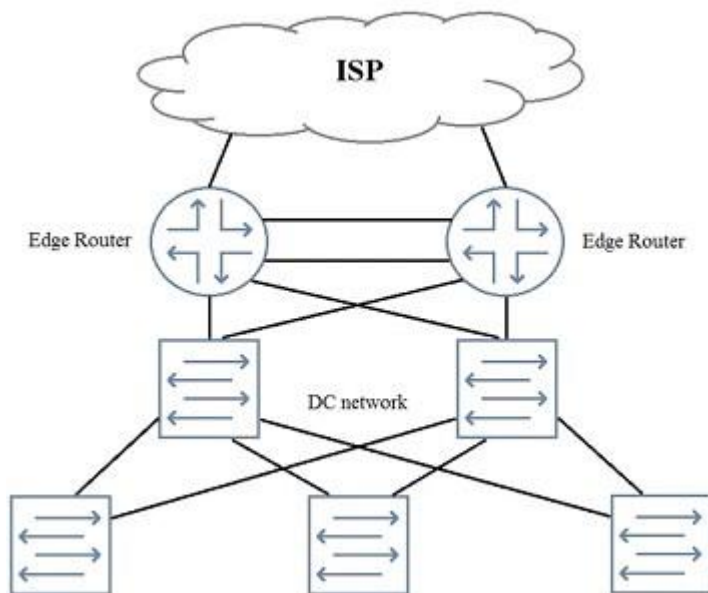
In this scenario, which BGP parameter would solve this problem?

- A. multihop
- B. multipath
- C. multipath multiple-as
- D. as-override

Answer: D

QUESTION 2

You need to add perimeter security to the network shown in the exhibit. All traffic must be inspected for attacks. The edge routers are using all available ports. Your solution must maintain both port and device resiliency.



In this scenario, which design would satisfy these requirements?

- A. one-arm SRX Series device using LAG
- B. one-arm SRX Series chassis cluster
- C. inline SRX Series chassis cluster
- D. inline SPX Series device using LAG

Answer: A

QUESTION 3

You are designing a network for a small data center.

In this scenario, which underlay protocol allows for the simplest implementation?

- A. OSPF
- B. IBGP
- C. EBGP
- D. MPLS

Answer: C

QUESTION 4

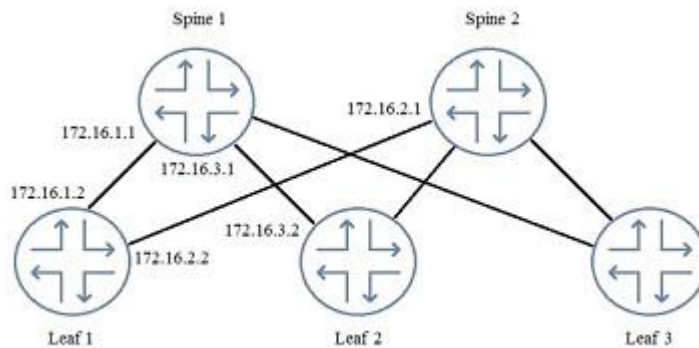
You are asked to manage the oversubscription ratio of your spine and leaf IP fabric. You determine that you are at a 3:1 ratio of downstream to upstream traffic and must achieve a 1:1 ratio. In this scenario, which two actions would you take to achieve this goal? (Choose two.)

- A. Increase the number of server-facing ports that each leaf node uses to carry traffic.
- B. Reduce the number of server-facing ports that each leaf node uses to carry traffic.
- C. Increase the number of spine nodes in your design.
- D. Reduce the number of leaf nodes in your design.

Answer: BC

QUESTION 5

You are logged in to Leaf 1. When examining the routing table, you notice that you have no routes from Leaf 2.



Referring to the exhibit, which two commands would you use to troubleshoot the problem? (Choose two.)

- A. From Leaf 2, issue the show route advertising-protocol bgp 172.16.1.2 command.
- B. From Spine 1, issue the show route advertising-protocol bgp 172.16.1.1 command.
- C. From Spine 1, issue the show route advertising-protocol bgp 172.16.1.2 command.
- D. From Leaf 1, issue the show route receive-protocol bgp 172.16.1.1 command.

Answer: CD

QUESTION 6

You are designing a Layer 3 fabric underlay using EBGp. You will implement an EVpN-signaled VxLAN overlay on the Layer 3 fabric.

In this scenario, what must you do in the underlay to ensure that the VxLAN overlay will be able to function properly?

- A. The underlay should advertise the host-connected interfaces on all leaf devices.
- B. Each device in the underlay should advertise its loopback address.
- C. The underlay should be configured with a separate VRF for each potential tenant.
- D. The underlay should support the PIM protocol.

Answer: B

QUESTION 7

You are configuring VxLAN, and you must ensure that all switches for the multicast groups advertise their existence and learn about other VTEPs.

In this scenario, which protocol will accomplish this task?

- A. OSPF
- B. BGP
- C. EVpN
- D. PIM

Answer: C

QUESTION 8

Which statement is true about a Data Center Interconnect over an IP network?

- A. Layer 2 data must traverse a point-to-point link.
- B. Layer 2 data must traverse an MPLS LSP.
- C. Layer 2 data must be encapsulated.
- D. Layer 3 data must be encapsulated.

Answer: B

QUESTION 9

You work in a data center where VMs and hosts are frequently moved. Your design needs to eliminate inefficient traffic flows.

In this scenario, which two solutions will satisfy this requirement? (Choose two.)

- A. VXLAN
- B. EVPN
- C. VMTO
- D. VPLS

Answer: AB

QUESTION 10

A VXLAN adds 50 to 54 bytes of extra header information to an Ethernet frame.

In this scenario, how would you accommodate this increase?

- A. Decrease the number VXLANs used.
- B. Increase the MTU on the physical interface connected to the VXLAN network.
- C. Only use switches as VTEPs.
- D. Increase the MTU on the VTEP interface connected to the VXLAN network.

Answer: B

Thank You for Trying Our Product

Lead2pass Certification Exam Features:

- ★ More than **99,900** Satisfied Customers Worldwide.
- ★ Average **99.9%** Success Rate.
- ★ **Free Update** to match latest and real exam scenarios.
- ★ **Instant Download** Access! No Setup required.
- ★ Questions & Answers are downloadable in **PDF** format and **VCE** test engine format.
- ★ Multi-Platform capabilities - **Windows, Laptop, Mac, Android, iPhone, iPod, iPad**.
- ★ **100%** Guaranteed Success or **100%** Money Back Guarantee.
- ★ **Fast**, helpful support **24x7**.



View list of all certification exams: <http://www.lead2pass.com/all-products.html>



10% Discount Coupon Code: ASTR14