



Vendor: NetApp

Exam Code: NS0-527

Exam Name: NetApp Certified Implementation Engineer,
Data Pro

Version: DEMO

QUESTION 1

You have just deployed a new AFF A400 cluster running ONTAP 9.7 that currently has no data aggregates created. You want to ensure that all new data aggregates are encrypted before you migrate production data to the new AFF A400 cluster.

In this scenario, which two actions would you use to accomplish this task? (Choose two.)

- A. After you create data aggregates, convert them to a NetApp Aggregate Encryption aggregate including root aggregates.
- B. Ensure that you have the NetApp Volume Encryption license installed.
- C. Ensure that the AFF A400 has self-encrypting drives.
- D. After you create a data aggregate, verify that it is encrypted by default.

Answer: AD

QUESTION 2

You are the administrator of an ONTAP 9.7 cluster. You configured an hourly Snapshot schedule for all volumes. One of your users accidentally deleted an important spreadsheet file on an SMB share. This file must be restored within a minimum amount of time.

Which two actions satisfy this requirement? (Choose two.)

- A. On the cluster CLI, issue the volume clone restore command.
- B. On the cluster CLI, issue the volume snapshot restore-file command.
- C. In Windows Explorer, right-click on the SMB share where the file was deleted, go to "Previous Versions" and select the file, then copy it to the original location.
- D. In ONTAP System Manager, navigate to the volume where the share resides, click on "Snapshot Copies" and restore the latest Snapshot copy.

Answer: BC

QUESTION 3

You are asked to re-purpose a NetApp FAS cluster. You need to verify that all encrypted data has been securely erased.

Which two features would allow you to securely re-purpose the array? (Choose two.)

- A. Secure Purge
- B. SnapLock Compliance
- C. Disk Sanitize
- D. NetApp Aggregate Encryption

Answer: AD

QUESTION 4

Click the Exhibit button.

```
cluster1::*> network test-path -source-node node1 -destination-cluster cluster1 -destination node node2
```

```
Test Duration: 10.65 secs  
Send Throughput: 1092.65 MB/sec  
Receive Throughput: 1092.65 MB/sec  
MB Sent: 11633.69  
MB Received: 11633.69  
Avg Latency: 64.40 ms  
Min Latency: 2.41 ms  
Max Latency: 2099.17 ms
```

You need to verify that you have a 10 Gb path between two clusters for SnapMirror traffic. Referring to the exhibit, how fast is the network path between the clusters?

- A. 10 Mb
- B. 100 Mb
- C. 1 Gb
- D. 10 Gb

Answer: C

QUESTION 5

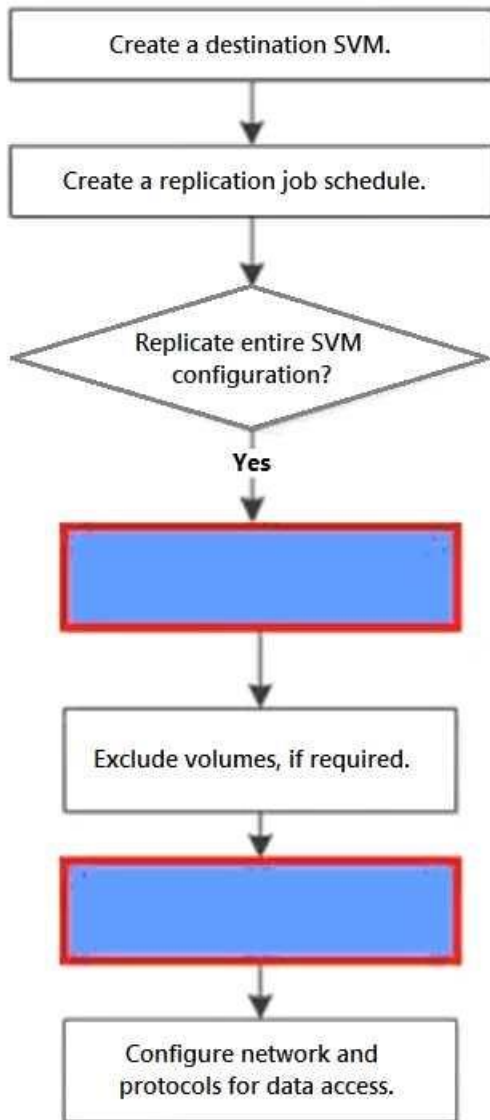
Which two statements are correct about configuring a peering connection between clusters? (Choose two.)

- A. The LIFs should be on the same subnet.
- B. You must use at least one intercluster LIF per node.
- C. You must use one cluster LIF per node per network.
- D. The intercluster LIFs must have full connectivity to each other.

Answer: BD

QUESTION 6

Click the Exhibit button.



You must set up SVM replication for the first time using CLI. This replication will be used for DR purposes. The SVM configuration does not need to be replicated at this time. In this configuration, you will be reusing a default policy.

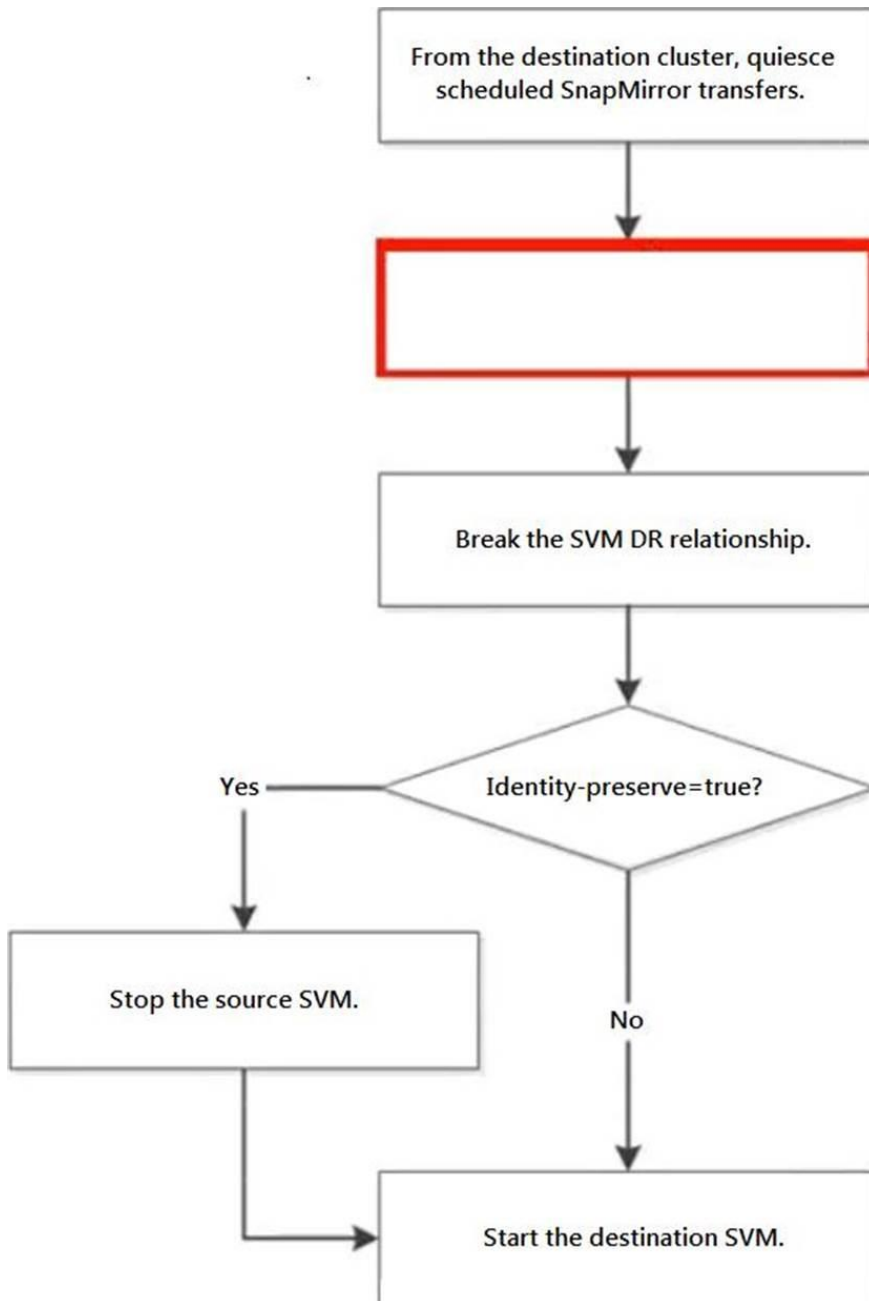
Referring to the exhibit, what are two missing steps from the SVM replication workflow? (Choose two.)

- A. Exclude specific LIFs and protocols from the replication policy.
- B. Create a relationship with the id-preserve option set to false.
- C. Initialize the newly created SnapMirror relationship.
- D. Initialize the relationship with the id-preserve option set to true.

Answer: BD

QUESTION 7

Click the Exhibit button.



In an ONTAP environment, an SVM-DR relationship exists between your AFF A220 cluster and your FAS2720 cluster, with identity preserve enabled. You are asked to test the disaster recovery workflow in an upcoming maintenance window.

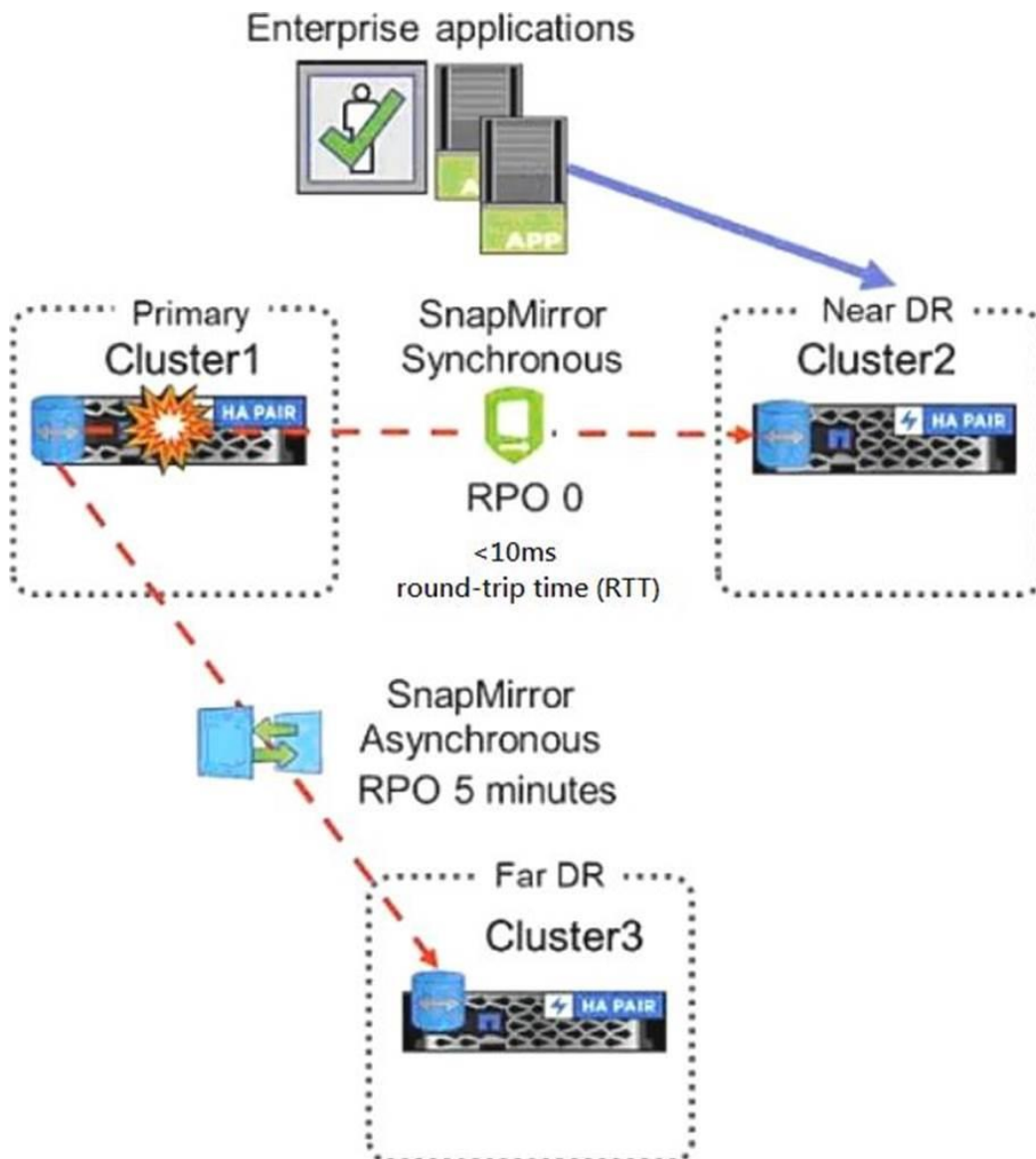
Referring to the exhibit, which step should be performed next to test the recovery workflow?

- A. Delete the SVM-DR relationship.
- B. Pause any ongoing transfers.
- C. Abort any ongoing transfers.
- D. Update any ongoing transfers.

Answer: C

QUESTION 8

Click the Exhibit button.



Referring to the exhibit, which three would be used to configure the three-way Data Center Disaster Recovery topology replication schedules? (Choose three.)

- A. Active IQ Unified Manager
- B. Active IQ
- C. ONTAP CLI
- D. ONTAP Select
- E. ONTAP System Manager

Answer: CDE

QUESTION 9

You want to use a Fabric Pool to store destination SnapMirror data to an external capacity tier. Which tiering policy would be used in this scenario?

- A. auto
- B. snapshot-only
- C. none
- D. backup

Answer: D

QUESTION 10

You must manually upgrade your company's 8-node cluster from ONTAP 9.5 to ONTAP 9.7. Due to the sensitivity of the data that is being stored on the cluster, it is company policy to perform these upgrades one node at a time.

What are two steps that you must perform to accomplish this task? (Choose two.)

- A. Terminate active NFS connections.
- B. Move Epsilon to maintain cluster quorum.
- C. Terminate active SMB connections.
- D. Change disk ownership.

Answer: BC

QUESTION 11

To assist with capacity planning, your supervisor wants to receive weekly capacity summary reports using e-mail for all on-premises ONTAP clusters. You are asked to implement a solution that has no additional software licensing costs.

Which action accomplishes this task?

- A. Configure Cloud Insights Premium Edition.
- B. Create a capacity dashboard in Active IQ Digital Advisor.
- C. Configure capacity and utilization reports in Active IQ Unified Manager.
- D. Configure Cloud Insights Basic Edition.

Answer: C

QUESTION 12

You are asked to enable WORM technology on a large amount of legal data. The legal team asks that a designated user group have the ability to delete files as needed.

What would satisfy the legal team's requirements?

- A. SnapLock Enterprise
- B. SnapVault
- C. SnapCenter Plug-in for Microsoft SQL Server

D. SnapLock Compliance

Answer: A

QUESTION 13

An ONTAP administrator is trying to configure a three-way-disaster recovery solution. Cluster 2 is within 50 km of Cluster 1, the primary cluster, with an RTT of 7 ms. Cluster 3 is over 300 km from Cluster 1 with an RTT of 29 ms.

In this scenario, what are two topologies that would accomplish this task? (Choose two.)

- A. a cascade topology from Cluster 1 to Cluster 2 with SnapMirror Synchronous, and then SnapMirror asynchronous from Cluster 2 to Cluster 3
- B. a fan out topology with SnapMirror Synchronous from Cluster 1 to Cluster 2 and SnapMirror Synchronous to Cluster 3
- C. a fan out topology with SnapMirror Synchronous from Cluster 1 to Cluster 2 and SnapMirror asynchronous from Cluster 1 to Cluster 3
- D. a cascade topology from Cluster 1 to Cluster 2 with SnapMirror Synchronous, and then SnapMirror Synchronous from Cluster 2 to Cluster 3

Answer: AC

QUESTION 14

Your backup cluster reached both the maximum number of parallel replication transfers and the maximum number of FlexVol volumes per node. You need to increase these maximum numbers.

In this scenario, which license you would install on the destination to accomplish this task?

- A. SnapRestore License
- B. SnapMirror Sync License
- C. Data Protection Optimized License
- D. SnapVault License

Answer: B

QUESTION 15

A customer wants a new solution that reaches a near-zero recovery time objective (RTO) and a zero recovery point objective (RPO).

In this scenario, which NetApp solution satisfies the requirements?

- A. NDMP
- B. MetroCluster
- C. SnapMirror
- D. SnapVault

Answer: C

QUESTION 16

You want to write custom workflows to perform disaster recovery operations for your environment

in OnCommand Workflow Automation.

In this scenario, which two scripting languages would be used to accomplish this task? (Choose two.)

- A. Perl
- B. Powershell
- C. PHP
- D. Python

Answer: AB

QUESTION 17

Click the Exhibit button.

Calculate Azure Costs with
Cloud Volumes ONTAP

Capacity TB
Underlying Capacity (17.08 TB)

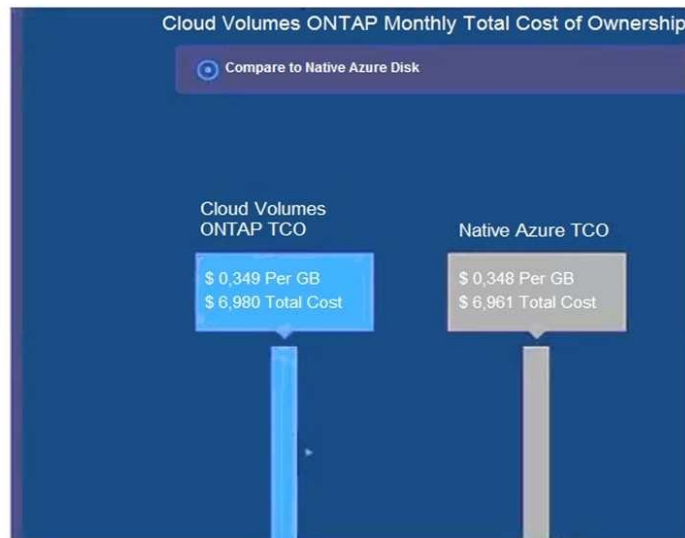
Azure VM Type

High Availability

Tier to Azure Blob

Use Volume Clones %

Advanced ▾



Using the NetApp Cloud TCO calculator, a customer wants to determine whether running Cloud Volumes ONTAP in Azure will be more cost effective than running native cloud services.

Referring to the exhibit, which action would satisfy the requirement?

- A. Turn off High Availability.
- B. Change the Azure VM Type to DS3_V2.
- C. Turn on Tier to Azure Blob.
- D. Change the Azure VM Type to DS14_V2.

Answer: B

Thank You for Trying Our Product

Lead2pass Certification Exam Features:

- ★ More than **99,900** Satisfied Customers Worldwide.
- ★ Average **99.9%** Success Rate.
- ★ **Free Update** to match latest and real exam scenarios.
- ★ **Instant Download** Access! No Setup required.
- ★ Questions & Answers are downloadable in **PDF** format and **VCE** test engine format.
- ★ Multi-Platform capabilities - **Windows, Laptop, Mac, Android, iPhone, iPod, iPad**.
- ★ **100%** Guaranteed Success or **100%** Money Back Guarantee.
- ★ **Fast**, helpful support **24x7**.



View list of all certification exams: <http://www.lead2pass.com/all-products.html>



Microsoft



ORACLE



CITRIX



JUNIPER
NETWORKS



EMC²
where information lives

10% Discount Coupon Code: ASTR14