

Exam Code: 920-180

Exam Name: ncts real time networking

Vendor: Nortel

Version: DEMO

Part: A

1: Which three components are H.323 endpoints? (Choose three.)

- A. Gatekeeper
- B. Terminal
- C. Gateway
- D. Multipoint Control Unit (MCU)
- E. Security Relay

Correct Answers: B C D

2: Which statement is true concerning SIP protocol?

- A. SIP is based on H.323
- B. SIP is an extension of HTTP/1.1
- C. SIP is a component of HTTP/1.1
- D. SIP is based on a request/response transaction model

Correct Answers: D

3: In an H.248 connection model, which is the definition of a context?

- A. Contexts represent the different phases of call setup.
- B. Contexts represent the segregation of call server domains.
- C. Contexts represent associations between collections of terminations.
- D. Contexts represent the difference between signaling traffic, bearer traffic and administration traffic for a device.

Correct Answers: C

4: H.248 is which type of protocol?

- A. a QoS Protocol
- B. a Media Gateway control protocol
- C. a Peer-to-Peer call control protocol
- D. a Real-Time packet encoding protocol

Correct Answers: B

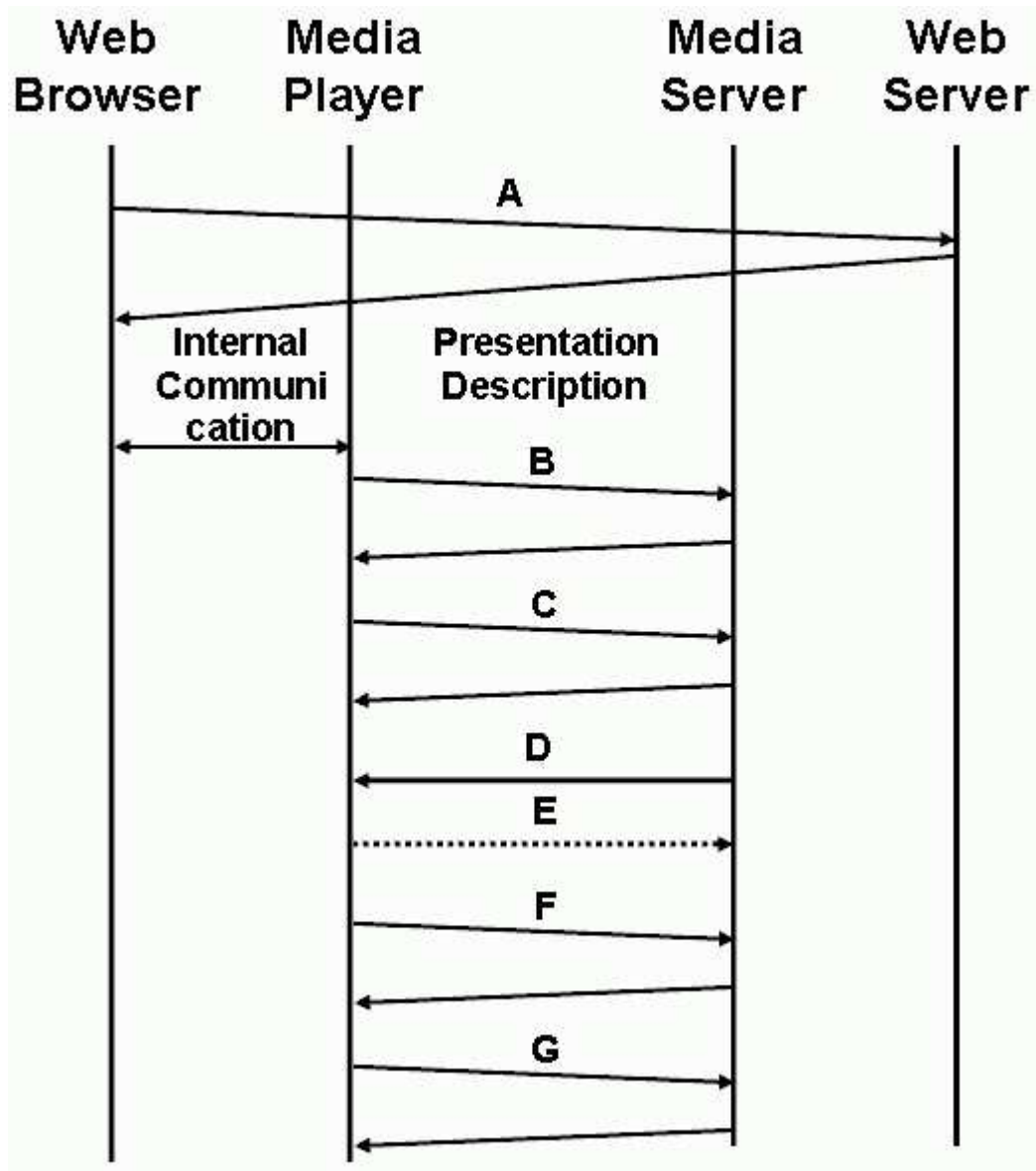
5: Which protocol is used for establishing media streams in H.323?

- A. G.711
- B. H.225.0
- C. H.245
- D. H.450

Correct Answers: C

6: Click on the Exhibit button.

In a typical RTSP operation what type of protocol will be used with transaction A?

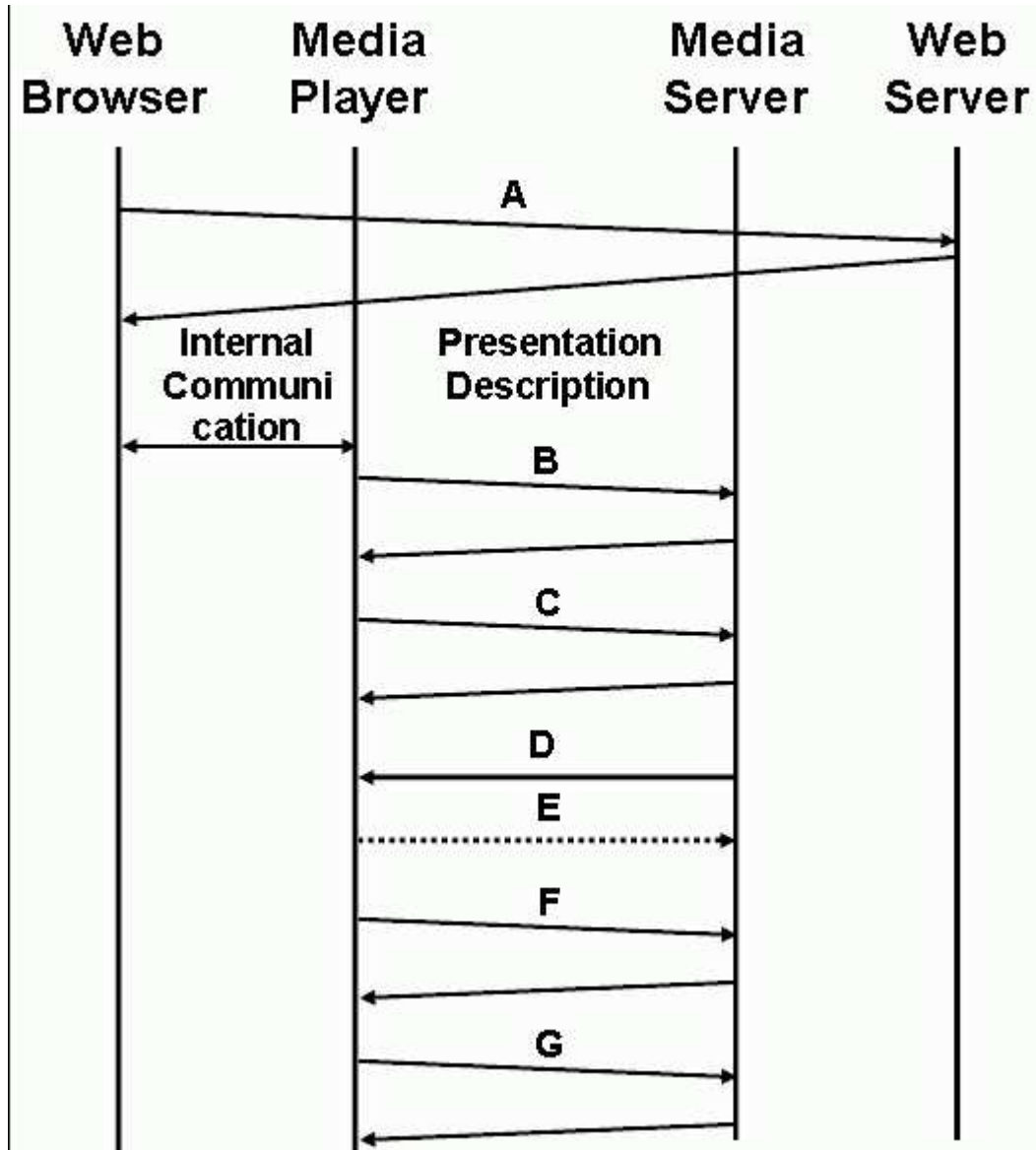


- A.RTP
- B.RTCP
- C.HTTP
- D.RTSP

Correct Answers: C

7: Click on the Exhibit button.

In a typical RTSP operation what type of protocol will be used with transaction C?



- A.RTP
- B.RTCP
- C.HTTP
- D.RTSP

Correct Answers: D

8: Which feature is common to both TCP and RTP?

- A.multicast
- B.error recovery
- C.session protocol
- D.reliable connection
- E.flow/congestion control

Correct Answers: C

9: Several RTP streams can be combined into a single stream. There are two sessions with

SSRC=6 and SSRC=23. Which are possible new session numbers? (Choose two.)

A.6

B.17

C.23

D.53

Correct Answers: B D

10: Which application can NOT be implemented using SUBSCRIBE/NOTIFY when using SIP protocol?

A.Codec Re-negotiation

B.Keypad Press Reporting

C.Message Waiting Indication

D.Presence (i.e., "Friends list")

Correct Answers: A